

Tasmania Adventures

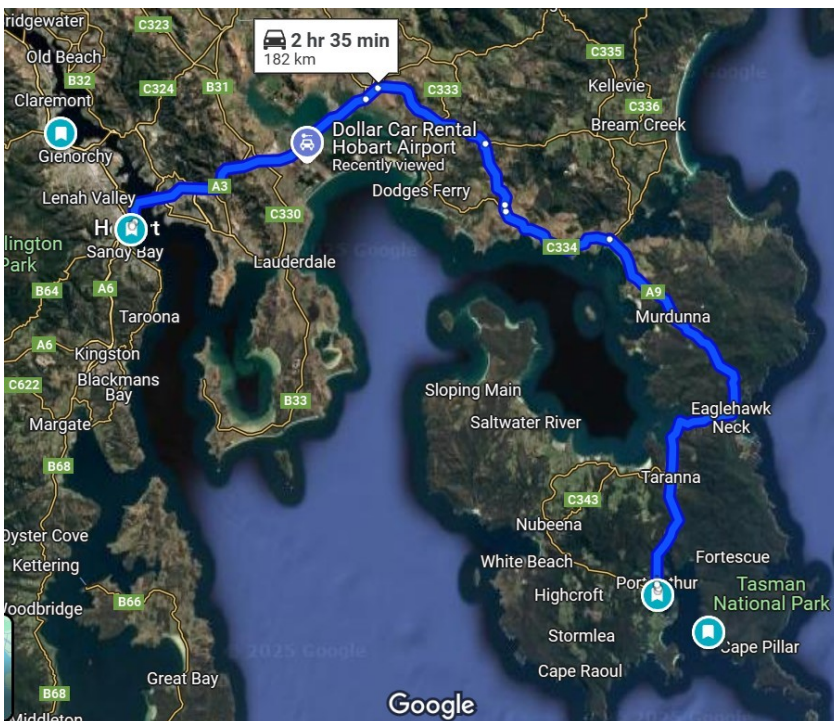
Schedule Summary

Tasmania Trip - Feb 11-27

		General Activity	Driving Distance	Hotel	Notes	Hotel
10-Feb	Mon	Linda Arrives		YHA Hobart		Booked (Linda)
11-Feb	Tue	Linda Arrives		YHA Hobart		Booked (Linda)
12-Feb	Wed	We arrive in Hobart Late		YHA Hobart		Booked (Sherry YHA)
13-Feb	Thu	Local exploration Hobart	Hop On Hop Off?	YHA Hobart	Get Park Pass at Visitor's center	Booked (Sherry YHA)
14-Feb	Fri	Port Arthur by Car	3 Hrs R/T	YHA Hobart		Booked (Sherry YHA)
15-Feb	Sat	AM: Market 8-10am				
	Sat	PM: Drive to Coles Bay	3 Hr Drive fm Hobt	Big 4 Iluka 2Br		Booked
16-Feb	Sun	Drive the East Coast	3 Hrs Driving	Kellrain Holiday Units	East Coast Nature World-Noon feeding	Booked
17-Feb	Mon	Launceston		Launceston BP	Jase, Museums	Booked
18-Feb	Tue	Launceston		Launceston BP	Georgetown	Booked
19-Feb	Wed	Cradle Mountain	3.5 hrs total driving	Railway Hotel, Queenstown		Booked
20-Feb	Thu	Explore around Q-Town & Strahan		Railway Hotel, Queenstown		Booked
21-Feb	Fri	Russell Falls		Giants Table and Cottages		Booked
22-Feb	Sat	Mt Field National Park		Giants Table and Cottages		Booked
23-Feb	Sun	Drive to Hobart - Stop at MONA		Snug Beach Cabins, SE of Hobart		Booked 2 nites
24-Feb	Mon	Bruny Island		Snug Beach Cabins	Car Ferry Cost \$35 return. Can purchase in advance. 20 min ride each way. No pub trans on island. Tours cost \$100+ AUD per person	
25-Feb	Tue	Hobart, Mt. Wellington, or Maria Island		YHA Hobart (Can Cancel day before)		Booked Separately
26-Feb	Wed	Check out of Hotel about 9:00am for 1:05 flight		On Airplane	25 minute drive to airport & car return	
27-Feb	Thu			Land Ipoh about 11:35am		
		Saturday				
		Sunday				

1.1 Day 1 – Hobart – Thu, Feb 13 – Exploring Hobart

1.2 Day 2 – Port Arthur Historical Site – Fri, Feb 14



<https://portarthur.org.au/> 9am – 5pm

- Pick up car at 8am
- 1.5 hour drive to Port Arthur
- Explore Port Arthur

Site entry \$48 AUD (\$30 USD)

Every site entry ticket to Port Arthur Historic Site is valid for two consecutive days - tours and activities including:

- Entry to the Port Arthur Gallery, which includes interactive exhibits and displays
- Self-guided Port Arthur Audio Experience
- 20-minute Harbour Cruise;
- Complimentary guide talks at key locations throughout the day;
- Access to more than 30 historic buildings, ruins, restored houses, heritage gardens and walking trails.

We offer a number of free guides around the

historic site. These talks change locations and times daily. We recommend that you refresh your screen to display the most up-to-date information.

- 1.5 hour drive back to Hobart

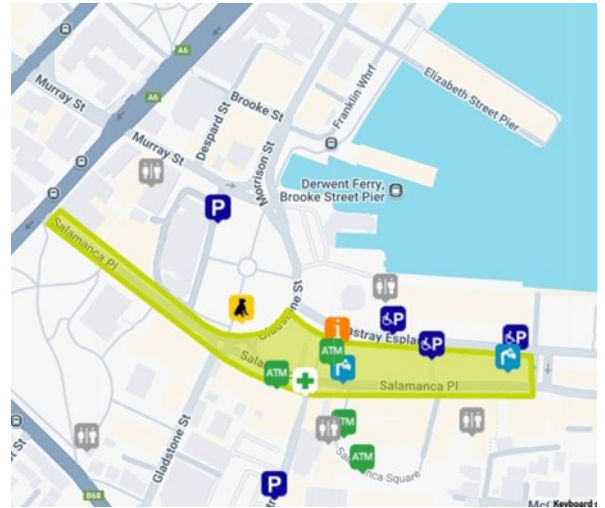
1.3 Day 3 – Freycinet National Park – Sat, Feb 15

- Walk? To Salamanca Market (10 minutes)
- Salamanca Market (1 hour)
- 2.5-3 hr drive to Coles Bay
- Visit Freycinet National Park Visitors Center
- Drive out to Wineglass Bay Lookout Car Park (10 min)
- Hike to the Lookout Point (1.5 hours round trip)

One of Freycinet’s most popular destinations, the Wineglass Bay Lookout Point is situated on a saddle between Mount Amos and Mount Mason.

It’s 201 metres above sea level, so you’re going to be walking uphill. It takes around 45 minutes to reach the top. The Wineglass Bay Lookout track is very well signposted and very well used, so there is little chance of getting lost.

- Optional: Hike down to Wineglass Bay Beach (1.5 hours round trip)
- Drive to Big4 Illuka for the night (10 minutes)



1.4 Day 4 – East Coast Exploration – Sun, Feb 16

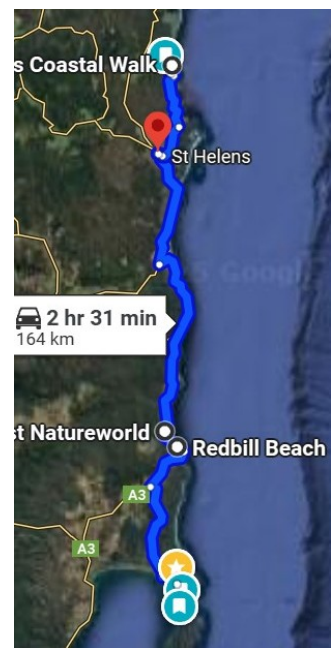
Day’s Plan: Drive to Bay of Fires, with casual stops along the way (approx. 3 hrs total driving time)

- Drive to Bicheno Blowhole (30 min)
- Bicheno Blowhole (30 min)
- Drive 5 Minutes to Red Bill Beach
- 20 minute return walk along beach to Diamond Island
- (Wrong tide to walk out to [Diamond Island Nature Reserve](#))

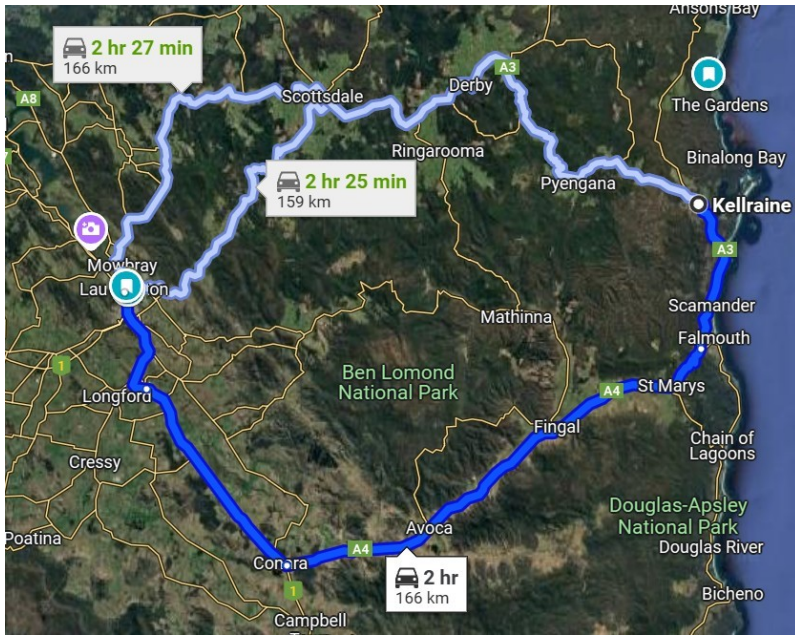
Diamond Island is a giant Little Penguin rookery. You can find the rare, small Swift Parrot here too. The island has the fiery lichen-covered rocks that are unique to the East Coast it has large, beautiful rock pools. **Note: Penguins are mostly around at sunset, not during daylight!**

Once you’re in Bicheno, walk or drive to Red Bill beach, the surf beach near Diamond Island. It’s about a ten-minute walk (at a reasonable pace) from the car park and along the beach to Diamond Island.

- Drive to [East Coast Nature World](#) (10 minutes) **BOOK TICKETS IN ADVANCE on their website Tasmanian Devil Feeding at 10am or noon**
- Stop at East Coast Nature World after 9:30am (animal park) \$20 Admission (2 hours?) (kangaroo, white / brown wallaby free moving in the park. Wombats and Tasmania Devils)
- Drive to St. Helens (1 hour)
- Lunch in St. Helens?
- Check in at hotel when going thru St. Helens? (30 minutes)
- Drive to Bay of Fires Coastal Walk (30 minutes)
- Late day visit to
- Overnight at [Kellrain Holiday Units](#) (2pm to 7pm Check In)



1.5 Day 5 – To Launceston – Mon, Feb 17



- Drive to Launceston (2-3 hrs)
- Afternoon in Launceston (Museum)
- Socializing with Jase & Jolene
- Staying at Launceston Backpackers

<https://app.channelmanager.com.au/booknow/launceston-backpackers-6278?s=MainWebSite>

1.6 Day 6 – Launceston/Georgetown – Tue, Feb 18

- Drive out to Georgetown (40 minutes)
- Muck around Georgetown (several things to do)

<https://tasmania.com/points-of-interest/george-town/>

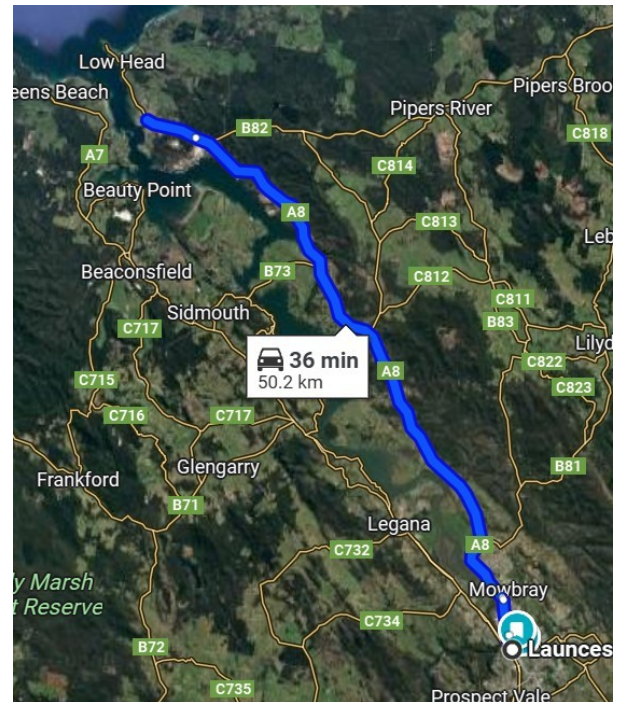
George Town is Australia's 3rd-oldest city behind only Hobart and Sydney. But it is difficult to focus on the history of this vibrant north coast town as you drive in through beautiful orchards, lavender fields, berry farms and vineyards. Once you get over the stunning inbound drive, head over to the Old Watch Museum. This retired lock-up is now a history museum for George Town and the area. You'll be impressed by the depth of the area's maritime history.

- Drive Back (40 minutes)

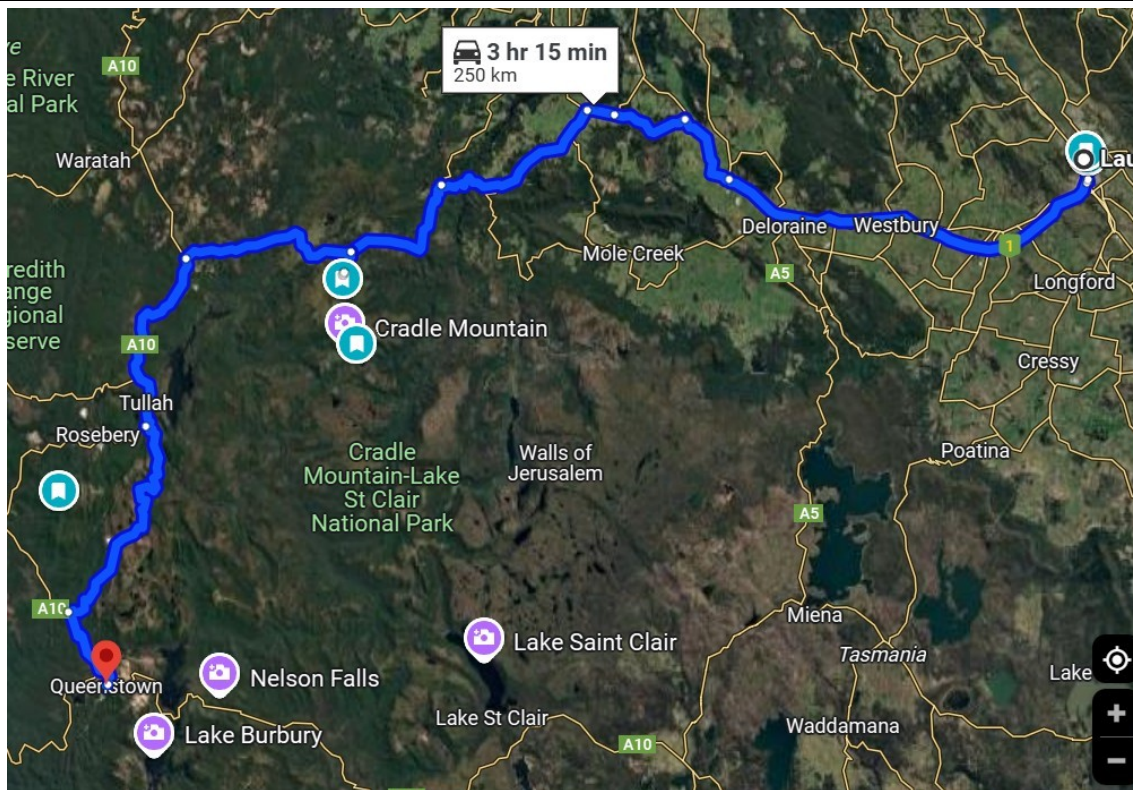
Notes on Launceston from some travel arranger:

The riverside city of Launceston is a vibrant hub for food and wine, culture, and nature. It's famed for the Cataract Gorge, visit this unique natural formation with panoramic views, walking trails, sculpted gardens, and a chairlift, perhaps consider experiencing the Cataract Gorge River Cruise.

Visit the Queen Victoria Museum, in a 19th-century railway workshop, has exhibitions on Tasmanian history. Its sister Art Gallery lies across the river, by sprawling Royal Park.



1.7 Day 7 – To Cradle Lake & Queenstown – Wed, Feb 19



- Drive to Cradle Lake 2hrs 15 minutes
- Cradle Lake Interpretive Center (Parking, bathrooms, maps, shuttle bus)
- Take shuttle bus to Dove Lake Walk start (20 minutes)

Right now you can only reach Dove Lake using the shuttle service. Park at the main car park, get a shuttle service ticket from the Information Centre Counter, get into the shuttle. The shuttle will stop at several stops, Dove Lake is the last stop. It will take about 20mins to reach there.

Cradle Lake Admission is \$29.10 AUD (\$20 USD)

- Walk the Dove Lake Circuit (3.5 miles, 3 hours for slow people)

The Dove Lake Circuit is a must-do track if visiting Cradle Lake National Park. The track will take you around the circumference of Dove Lake, where you will see different microclimates and the various types of fauna that come with it.

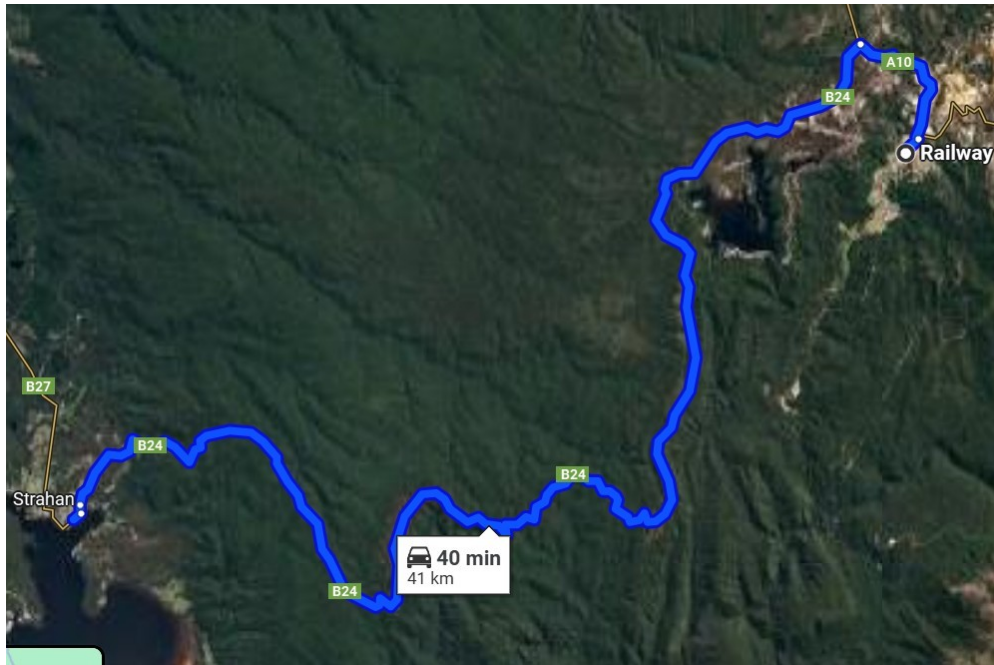
The walk isn't too difficult. There are some parts that go up for a while, but for the most part it is steady. The track quality is good and the track is well maintained.

One important aspect to note is there is no shelter whatsoever throughout the entire track. I found this out the hard way when we did the track in the rain, thinking there might be a shelter to stop and have a picnic out of the rain, there wasn't.

The weather at Cradle Mountain can change rapidly. While the loop track is not very long, it is best to pack warm clothing that is resistant to precipitation in case you get caught by bad weather away from the carpark. The boatshed can also provide emergency shelter. Even if you don't want to hike, you can catch the bus to Dove Lake, and you will see the beautiful view there.

- Shuttle bus back to Visitor's Center (30 minutes)
- Drive to Queenstown (1.5 hours)
- Lodging at Railway Hotel (2 rooms) <https://www.booking.com/hotel/au/railway-queenstown.html>

1.8 Day 8 – Queenstown and Strahan – Thu, Feb 20



- 45 minute drive to Strahan
- Or (Optional) West Coast Wilderness Railway (several options)
 - o 3 hr trip \$85 AUD Departs 10am daily exc Sun & Mon
<https://wcvr.com.au/rinadeena-rack-rainforest/>

Journey through the historic mining town of Queenstown, once cut off from the world except for the existence of this unique railway. Alight at Lynchford Station, formerly a small town brimming with gold fever, now lost to history. Pan for gold or browse the Pioneer’s Room to learn more of our history before boarding the train for your next destination.

- o 2.5 hr trip from Strahan \$65 AUD
<https://wcvr.com.au/teepookana-and-the-king/>

Step onboard the West Coast Wilderness Railway’s heritage Drewry diesel train at Regatta Point Station in Strahan and head deep into the rainforest, while onboard guides share stories of those who built the railway and called it their home.

Journey over the Iron Bridge at Teepookana, once a thriving port town, before disembarking at Lower Landing Station on the King River. Enjoy a short, nature walk and taste honey, with its origins from local endemic species, before heading back to Strahan.

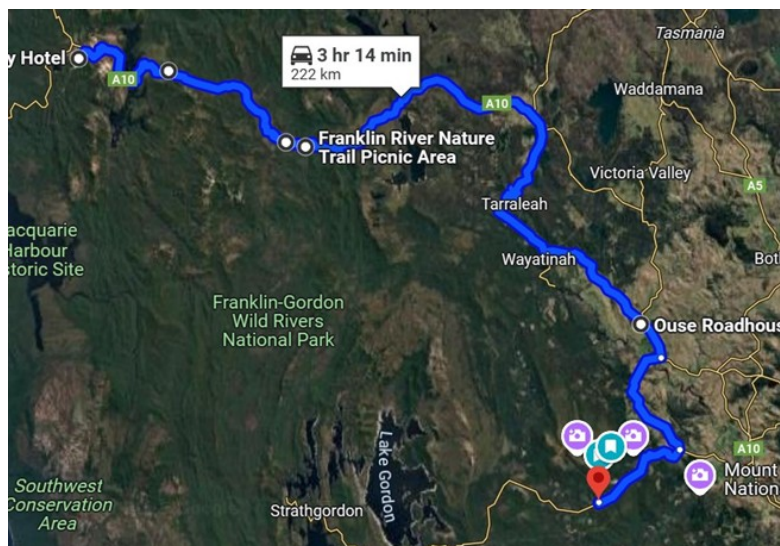
1.9 Day 9 – A Day of Falls – Fri, Feb 21

Long drive to Russell Falls, but stops on the 3-4 hours total drive, depending on route

- 30 minute Drive to Nelson Falls
- Nelson Falls, bathrooms, 20 minute return walk

This attraction is on the road from Queenstown going east. It is a very popular - lots of cars, motorhomes, bikes and a few caravans stopped. Public toilet was handy.

The walk to the Falls is through the forest - well maintained, crosses the river a few times, then a great view of the falls.



way

stop

very

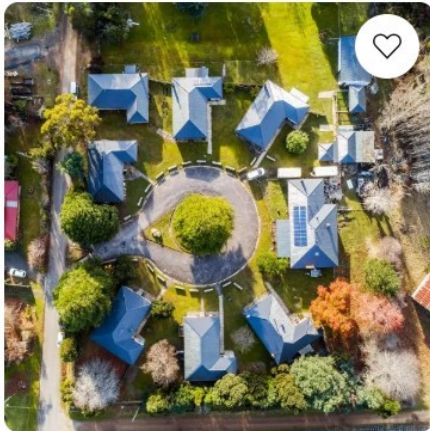
- 30 minute Drive to Frenchman's Cap
- 30 minute return walk to Frenchman's Cap Suspension Bridge

Dirt/boardwalk track to the suspension bridge (this is the start of the Frenchmans Cap multiday hike). Nice scenery and worth the short 30 minute return walk if you're going past.

- 5 Minute Drive to Franklin River Nature Trail Picnic Area
- Walk the 1 km loop approx 25 minutes

Good short easy walk to stretch the legs. Beautiful rivers and forest. Toilet closed.

- 1.5 hrs to Ouse (small town, roadhouse for food, IGA for groceries)
- 1 hr in Ouse?
- 45 minute drive to Giants Table and Cottages where we have 1 unit with 2 rooms



Giants Table and Cottages

Maydena · [Show on map](#) · 7.4 miles from National Park

Two-Bedroom Villa

Entire villa · 2 bedrooms · 1 living room · 1 bathroom · 753 ft²
3 beds (2 twins, 1 queen)

✓ **Free cancellation**

Only 1 left at this price on our site

Very Good **8.3**
446 reviews

Mon, Feb 10 - Tue, Feb 11

1 night, 2 adults

\$126

[See availability >](#)

1.10 Day 10 – Mount Field National Park – Sat, Feb 22

- Details tbd, but looks like lots to do in the area

1.11 Day 11 – Sun, Feb 23

Drive to MONA 1.5 hr

Stop at [Museum of Old and New Art?](#)

Download the Android/iPhone app

<https://mona.net.au/other-stuff/the-o>

\$39 AUD (\$25 USD) Entry, pre-book

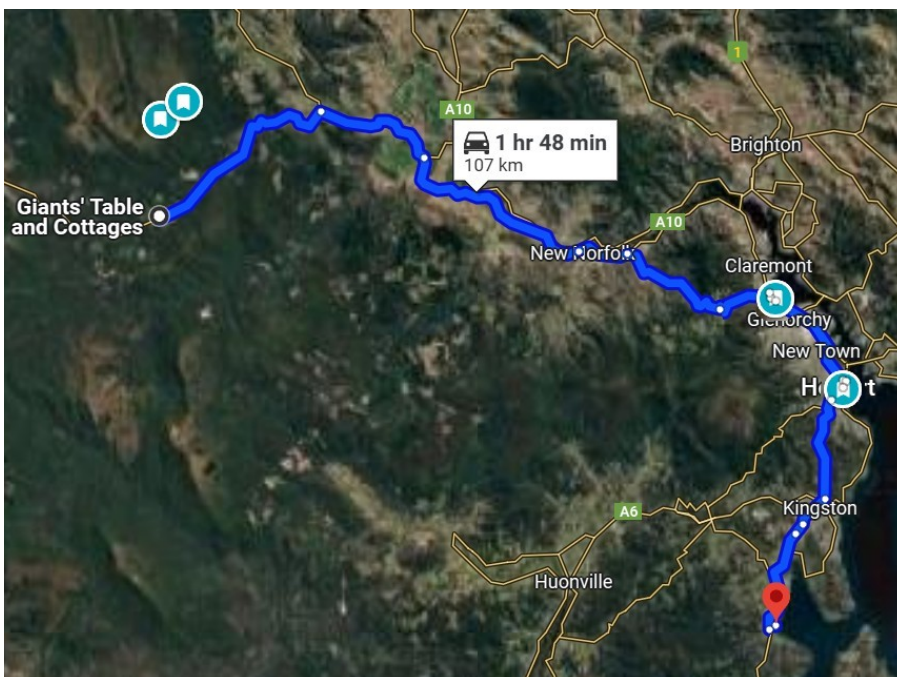
Recommend 4 hours there

Drive to Snug Beach Cabins 45 minutes

Booked 2 nites in 2 Br Waterfront cabin with kitchen. **Best to arrive before 3pm when office closes**

If reception is not open when you arrive there will be an envelope in the mailbox at the reception entrance with your name on it containing a park map, key (for cabin bookings) and a receipt.

IGA Grocery store nearby



Rest up for long day to Bruny Island

1.12 Day 12 – Bruny Island – Mon, Feb 24



Drive / Take Ferry Over / Drive Around / Ferry Back / Drive

Car Ferry Cost \$53 AUD (\$35 USD) return. Can purchase in advance. 20 min ride each way. No public transportation on island. Guided tours of Bruny Island are expensive. Self-drive is the way to go.

- Drive to Ferry (10 minutes)
- Wait for Ferry??
- Ferry Over (30 minutes)
- Drive to Lighthouse (2 hrs with stop at The Neck)
- Cape Bruny Lighthouse (Optional Tour for \$25AUD) (1 hr)

This remote and historic lighthouse offers dramatic views of the rugged Tasmanian coastline. Climb up the wrought iron spiral stairs and step out onto the balcony to enjoy the breathtaking landscape.

70 steps plus the walk from the parking area

- Drive to Bligh Museum (50 minutes)
- Bligh Museum (2 hrs)
- Bligh Museum of Pacific Exploration

The Bligh Museum is a privately-run history museum at Adventure Bay. Built from thousands of convict-made bricks, the Bligh Museum of Pacific Exploration features a specialized collection relating to exploration in the South Pacific. A display of maps, documents, paintings and other artefacts offers a historical record of visits to Adventure Bay by explorers Captain William Bligh, Captain James Cook, Tobias Furneaux, Matthew Flinders and Admiral Joseph-Antoine Bruny D'Entrecasteaux.

- Drive Back to Ferry
- Ferry Back
- Drive back to Snug Bay Cabins (10 minutes)

1.13 Day 13 – More Hobart – Get to YHA – Tue, Feb 25

Do things in Hobart, check out of Snug Bay, check in to YHA Hobart

Note: I have booked us in, Linda needs to book herself in.

(Ensuite room only \$65 USD)

“Explore the city centre, visit the historic Cascade Brewery for lunch and a tasting paddle at the foot of Mount Wellington, stroll the charming old streets of Battery Point or catch up on any highlights you didn't fit in on Day One”

Or drive up to Mount Wellington (40 minute drive)

1.14 Day 14 – Departure Day – Wed, Feb 26

- Out of Hotel about 9am
- Drive Car to Airport (30 min)
- Drop off Car
- Check in for 1:25 Flight to Melbourne (domestic)

See cost summary next page

Tasmania Trip - Feb 11-27

Shared Expense Breakdown (USD)	USD	Linda's Share	
YHA Hobart (3 nights triple room)	\$ 298.43	\$ 99.48	*Booked Direct - Auto Charge 2/12
Big 4 Iluka (1 night 2 Br)	\$ 173.17	\$ 57.72	Booked Direct - Paid (Capital One) Cancellable until day of arrival
Kellrain Holiday Units (1 night 2 br)	\$ 151.22	\$ 50.41	Booking.com - Gave CC (Capital One) - Will auto charge on 2/11
Launceston Backpackers (2n x 1 rm)	\$ 126.92	0	Booked Direct - Paid (Capital One) - Linda booked separately
Railway Hotel, Queenstown 2n x 2 rms	\$ 150.00	\$ 50.00	Booking.com - Gave CC (Capital One) - Will auto charge on 2/19
Giants Table and Cottages 2rm cottage x 2n	\$ 325.82	\$ 108.61	Booking.com - Gave CC (Capital One) - Will auto charge on 2/12
Snug Beach Cabins 2rm cabin x 2n	\$ 230.00	\$ 76.67	Direct, see email. Gave CC (Capital One) - Will auto charge on 2/23
YHA Hobart (1 night)	\$ 65.00	\$ -	Booked Direct - Paid (Capital One) - Linda booked separately Cancellable until day of arrival
*We messaged and changed from 4 to 3 nights, but didn't get a new booking confirmation			
Other Shared Expenses			
Car Rental 2/14 to 2/26	\$ 437.00	\$ 145.67	
National Park Pass	\$ 58.22	\$ 19.41	https://parks.tas.gov.au/explore-our-parks/know-before-you-go/park-passes-and
Bruny Island Ferry	\$ 35.00	\$ 11.67	https://www.sealink.com.au/bruny-island/ferry-information/bruny-island-ferry-f
		\$ 619.62	

Tasmania Trip - Feb 11-27

	From	To	Airline	Flight No	Airplane	Time Enroute	Depart	Land	Carry On	Checked	Seats	Food?	Booking Ref
TAXI	Marina	Ipoh Airport				1:45	12:30 PM						
Leg 1	Ipoh	Singapore	Scoot	TR 487	A320	1:45	2/11 5pm	2/11 6:40pm	10 Kg	20 Kg	17D,17C	--	Z5BW2Y
Layover Singapore		6:15 hrs											
Leg 2	Singapore	Melbourne	Scoot?	TR 18	787-9	7:45	2/12 0:55am	2/12 11:40am	10 Kg	20 Kg	32F,31H	--	Z5BW2Y
Layover Melbourne		7:50 hrs											
Leg 3	Melbourne	Hobart	Virgin Aus	VA 1330	737-8	1:20	2/12 7:30pm	2/12 8:50pm	7 Kg	23 Kg	21C,21D	--	UNLJLY
Total Time Enroute:		25											
Feb 12 - 26 in Hobart													
Leg 1	Hobart	Melbourne	Virgin Aus	VA 1323	737-8	1:25	2/26 1:05pm	2/26 2:30pm	7 Kg	23 Kg	20C,20D	--	UNLJLY
Layover Melbourne		7 hrs											
Leg 2	Melbourne	Singapore	Scoot	TR 25	787-9	7:40	2/26 9:25pm	2/27 02:05am	10 Kg	20 Kg	17F,11H	--	Z5BW2Y
Layover Singapore		4:05											
Leg 3	Singapore	Ipoh	Scoot	TR 484	A320	1:20	*2/27 10:25am	2/27 11:35am	10 Kg	20 Kg	15C,15D	--	Z5BW2Y
Total Time Enroute		22.35					* Flight details changed 2/6 by email						
Airfare	Scoot \$ 1,550.00	VA \$ 427.00	Includes seats and baggage										

What We Didn't Do that We Wish We Had

- A couple more days (stay a day or two more in each place, drive less per day)
- Bicheno Penguin Tour (completely booked thru the end of Feb now)

Maria Island (Notes) – Mike recommended – Info on what's there: <https://www.mariaisland.tours/seasonal-guide/>

- Drive to Triabuna from Hobart (1 hr 15 min)
- Ferry to Maria Island (\$54 AUD pp r/t)
- National Parks Pass for the day
- Catch 10am ferry
- Rent bicycles <https://encountermaria.com.au/bike-hire/> \$40 pp
- Catch 4:15 ferry back
- Cost (Ferry + Bike Rental) USD per person: \$56 USD