

Cruising Thailand & Sumatra 2024



22 Nov 2024



Sherry & Dave McCampbell
svsoggypaws.com/presentations.htm



Soggy Paws Across the Pacific 2007-2015

ASIA

Japan

NORTH AMERICA

PACIFIC OCEAN

Rio Dulce

MELBOURNE

2007

2008

Colombia

Philippines

2015

Yap Truk

2014

DAVAO

Palau

F.S.M.

Pohnpei

Marshall Islands

2013

Solomons

Tarawa

Samoas

2011

Societies

Marquesas

Tuamotus

Fiji

Tonga

2012

Tahiti

French Polynesia

Gambiers

Pitcairn Island

Galapagos

Panama

2009

Ecuador

Peru

SOUTH AMERICA

Chile

Juan Fernandez

AUSTRALIA

New Zealand

~30,000 nm



SE Asia Overview



Ten Years Cruising SE Asia

- **Inland travel:** Philippines, NZ, England, Cambodia, Thailand, Viet Nam, Borneo, Maldives, Japan
- **2015, 2016 & 2017:** Indonesia 3 cruises to Borneo, Lembah, Raja Ampat, Triton Bay, Ambon, Banda, Halmahera, Morotai, Palau
- **2018 & 2021:** Philippines 2 cruises to Visayas
- **2019:** Papua New Guinea & Solomons cruise
- **2020-2021 COVID:** In port HOV Davao, Philippines
- **2022:** Philippines to Malaysia via E Indonesia, Raja Ampat, Papua, Komodo, Bali & Singapore
- **2024:** Circumnavigate Sumatra, Java, East Malaysia, Singapore
- **2025 plan:** Thailand to E Mediterranean via N Indian Ocean, Sri Lanka, India and Red Sea or ??

Soggy Paws

South East Asia

2015–2022

Six Cruises



**Cruising Home Base for 8 years
Ocean View Marina,
Samal Island, Davao, Mindanao, Philippines
September 2014-Feb 2022**



**View from our condo next to the marina
during COVID (Mar 2020-Apr 2021)**



COVID-19
CHECK POINT
STAY AT HOME 





**Alex & Dave working
on saildrives during
COVID.**



Deck painting helpers Alex & Kim



Hull extensions, made from
honeycomb and foam covered
in fiberglass

Save





**Finished port
hull extension**

**8 cu ft front-loading refrig box
and evaporator plate installed**





Finished new refrigerator in port aft cabin near galley

Original
helm seat





**New fiberglass core
helm seat**
– Able to sit and see
– Wide enough for 2
– Storage underneath



New honeycomb/fiberglass cockpit hardtop being installed



**800 watts of solar on
the new hardtop**

4 of the 8 new lithium cells ready for testing



New Battery Monitoring Screen

Battery

13.31 Volts -230.9 Ah

57 % SOC Temp 82 F

LED's

- Charge Enable
- End of Charge
- Over Voltage
- OV Lock

- Loads Enable
- LV Warn
- Under Voltage
- UV Lock
- Low V Cutoff

Daily Highs and Lows

Highest Battery **13.69 V**

Lowest Battery **13.26 V**

Highest SOC **100 %**

Lowest SOC **84 %**

Highest Cell **3.509 V**

Lowest Cell **3.310 V**

Max Ah **-105.4 Ah**

Max PV Output **37.269 Amps**

Max Load **12.279 Amps**

Cells

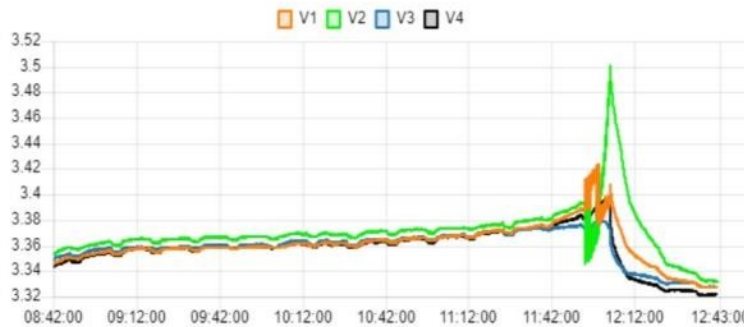
Cell 1	Cell 2
3.328 V	3.333 V
Cell 3	Cell 4
3.328 V	3.322 V

Cell Delta
11 mV

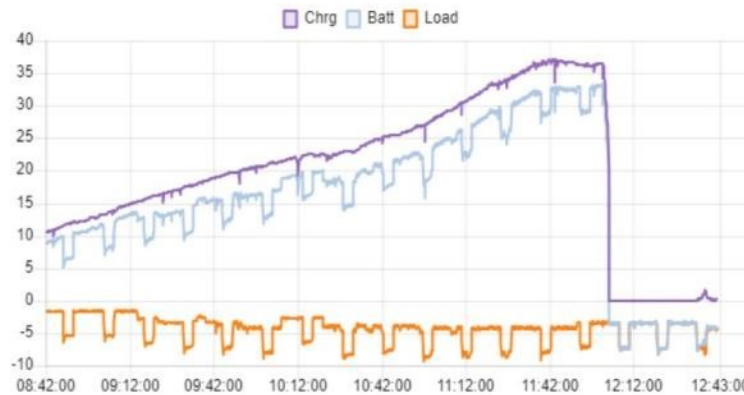
Cell Voltages



Cells (V)



Amps



Current Flows

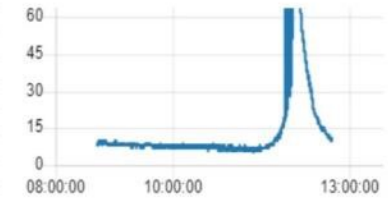
Charge **0.47 Amps**

Battery **-4.04 Amps**

Load **-4.51 Amps**



Delta Chart



Charging Status

Stbd Alt State **Off**

Port Alt State **Off**

Solar State **Float**

Solar V Setpoint **13.25**

Solar V **13.26**

Solar Amps **-0.1**

Solar Faults **None**

Solar Alarms **None**

Details here:

<http://svsoggypaws.com/electricalsystems.htm>

542 ahrs 12v LFP
house bank in
compression box



Sherry's new dinghy chaps





**2 Month delay in going cruising
Adopted Perkins
gives birth to 4 kittens**

**Our Charlie and
brother Henry**



Apr 2021: Charlie and Mommy Perkins first day underway



**Late 2022:
Seasoned cruisers
Perkins and Charlie
resting in their
favorite box**



2022 Trip Through Indonesia

4,700 nm



Borneo

Kalimantan

INDONESIA

Bafi
Engine
Overhaul

Komodo
Dragons

Alor

TIMOR-LES-TE

Lembeh
Bitung
WW2

Raja Ampat
Sorong
WW2

Tual
Engine
Overhaul

HOV Marina

2022 Trip Through Indonesia

4,700 nm

**Arrived Nov 2022
Pangkor Marina
West Malaysia**



Pangkor Laut
Resort Office

Pangkor Marina Sdn Bhd

Marina Island Pangkor
Resort & Hotel (Suites...)

Marina D'Sky Homestay

Marina Island
Pangkor Resort &...

Frenzy Water Park
Marina Island Pangkor

Marina Island Apartment
AzzaroHome Homestay 3

Marina Island
HomeHotel by GooTrip

Homestay Lumut Laguna

Soggy Paws

Charlie &
Perkins' apt

Original plans for 2023

- **Finish marina work by end April**
- **Cruise north**
 - Penang, Malaysia
 - Langkawi Malaysia
 - Thailand
- **Prep to set off for Red Sea in January 2024**
- **One more visit to FL in Oct/Nov**
- **January 2024: Thailand to Sri Lanka?**

New Agenda for 2023 & 2024

- **2023: Remain hauled for boat work & trips**
 - 2 Trips to US, 1 Inland Malaysia, 3 weeks in Vietnam
- **Dec 2023-Feb 2024: Cruise N Malaysia & Thailand**
- **Join West Indonesia Rally starting in late Feb**
- **Feb: Sabang (N Sumatra) Marine Festival**
- **March-April: Cruise Sumatra west coast**
- **May: In Jakarta Batavia Marina for Sherry to fly to FL for 50th HS reunion**
- **Jun-Aug: Visit Anambas, Tioman and Singapore**
- **Sep: Return to Pangkor for haulout**
- **Oct–Dec 2024: fly to US**

**Thailand to
Singapore via
Sumatra & Java
Cruise 2024,
4000nm**

Scale:  200nm



Dec-mid Feb 2024 Cruise Thailand

Scale:  ~50nm

Surin
Islands
National
Park

James Bond
Island

Phuket

"The Beach"
Island

SURAT THANI

PHANG-NGA

KRABI

PHUKET

NAKHON SI

TRANG

SATUN

SONGKHLA

PATTANI

PERLIS

Langkawi
Malaysia

Padang Besar

Kangar

Changlun

Alor Setar

YALA

NARATHI

Koh Samui
เทศบาลนคร
เกาะสมุย

Gulf of
Thailand

Talat Yai

เทศบาล
ตำบลควนศรี

Phuket
เทศบาล
นครภูเก็ต

Hat Yai
เทศบาลนคร
หาดใหญ่

Yala
เทศบาล
นครยะลา

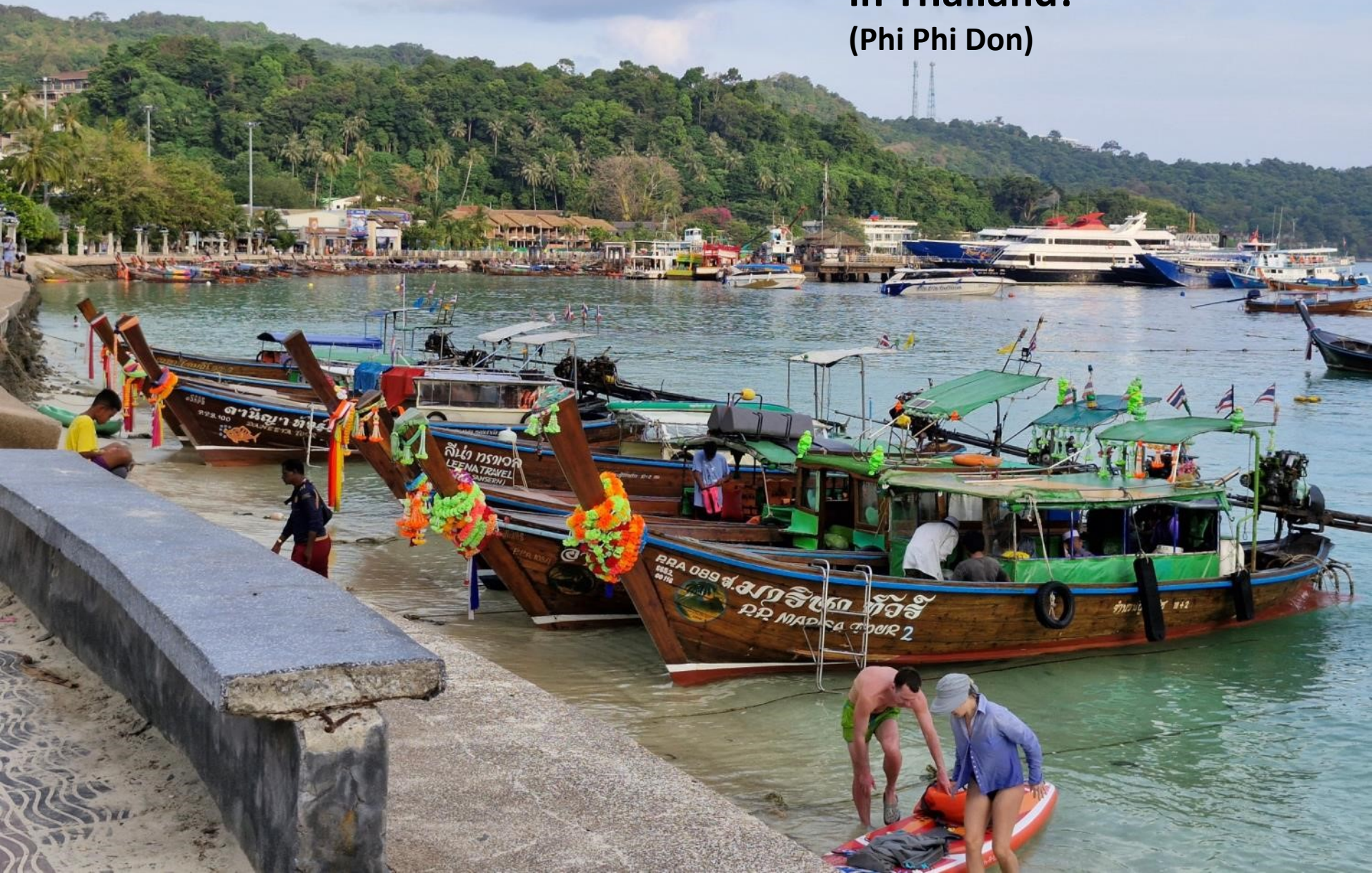
KEDAH

Whirlwind Tour Of Phang Na Bay





Tourist Season in Thailand! (Phi Phi Don)







Thai “Longtails”



Visiting the Hong (Caves in Karst Islands)











James Bond Island

“The Man with the Golden Gun”



Dec-mid Feb Cruise Thailand

Scale:  ~50nm

Surin
Islands
National
Park

James Bond
Island

Phuket

Nai Harn

"The Beach"
Island

Koh Samui
เทศบาลนคร
เกาะสมุย

Gulf of
Thailand

SURAT THANI

PHANG-NGA

NAKHON SI

KRABI

PHUKET

TRANG

SATUN

SONGKHLA

PATTANI

PERLIS

Langkawi
Malaysia

Kedah

Padang Besar

Kangar

Changlun

Jitra

Alor Setar

KEDAH

Yala
เทศบาล
นครยะลา

YALA

NARATHI

Talat Yai

เทศบาล
ตำบลควนศรี

© 2023 Google

© 2023 Google

© 2023 Google

© 2023 Google

© 2023 Google

© 2023 Google

Cruiser's Hangout in Winter

Nai Harn Bay

(SW Phuket)



Heading North along the West Coast Sunset at Bang Tao



Koh Phyam – A little further off the beaten path





Surin Islands Off the Beaten Path? NOT!



Camping Tourism??



Eating Out!



“ระวังสิ่งแย่งกระเป๋า”



WARNING

**"Beware of Monkeys
Snatching Your Purses"**





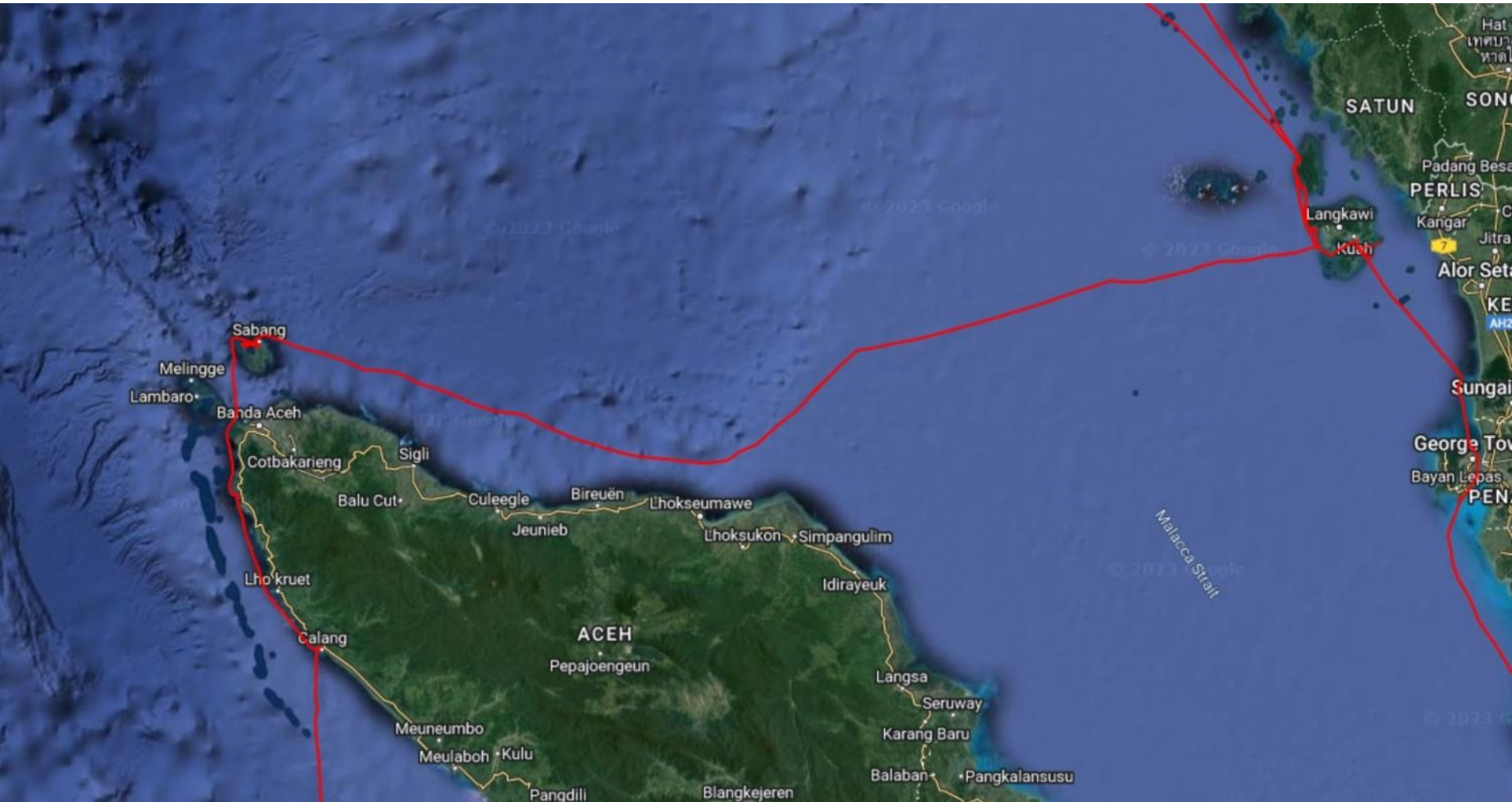
Monkeys Foraging at Low Tide

Chinese New Year



Late Feb: Langkawi Malaysia to Sabang Indonesia

The Start of the West Indonesia Rally



Traffic Exiting the Malacca Strait

(marinetraffic.com)



Crossing to Sabang, Indonesia

3 days 2 nights, 300 nm



Sabang Marine Festival parade

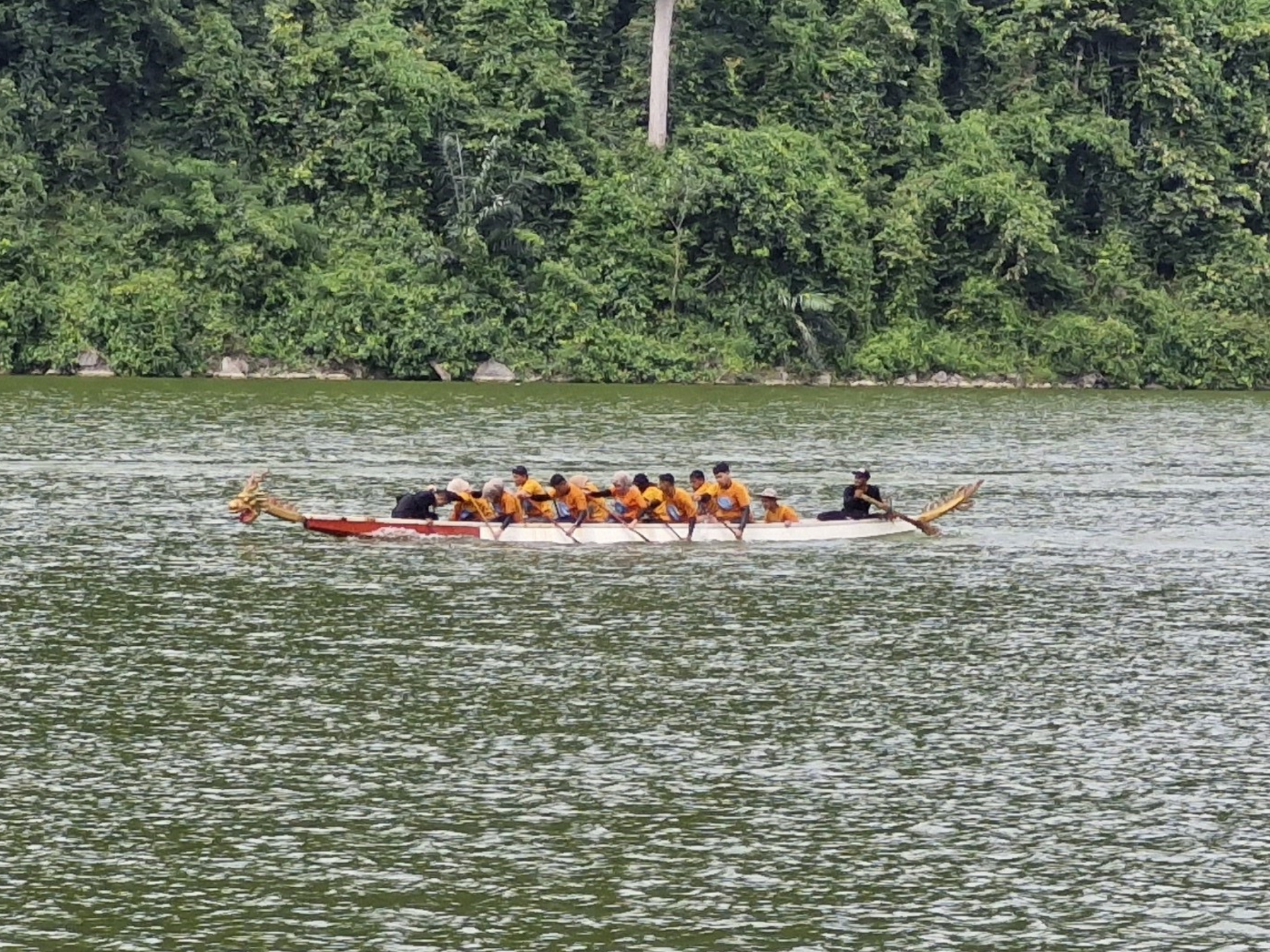


Sabang Marine Festival Boat Parade





Canoe Races



Lunch on the Beach



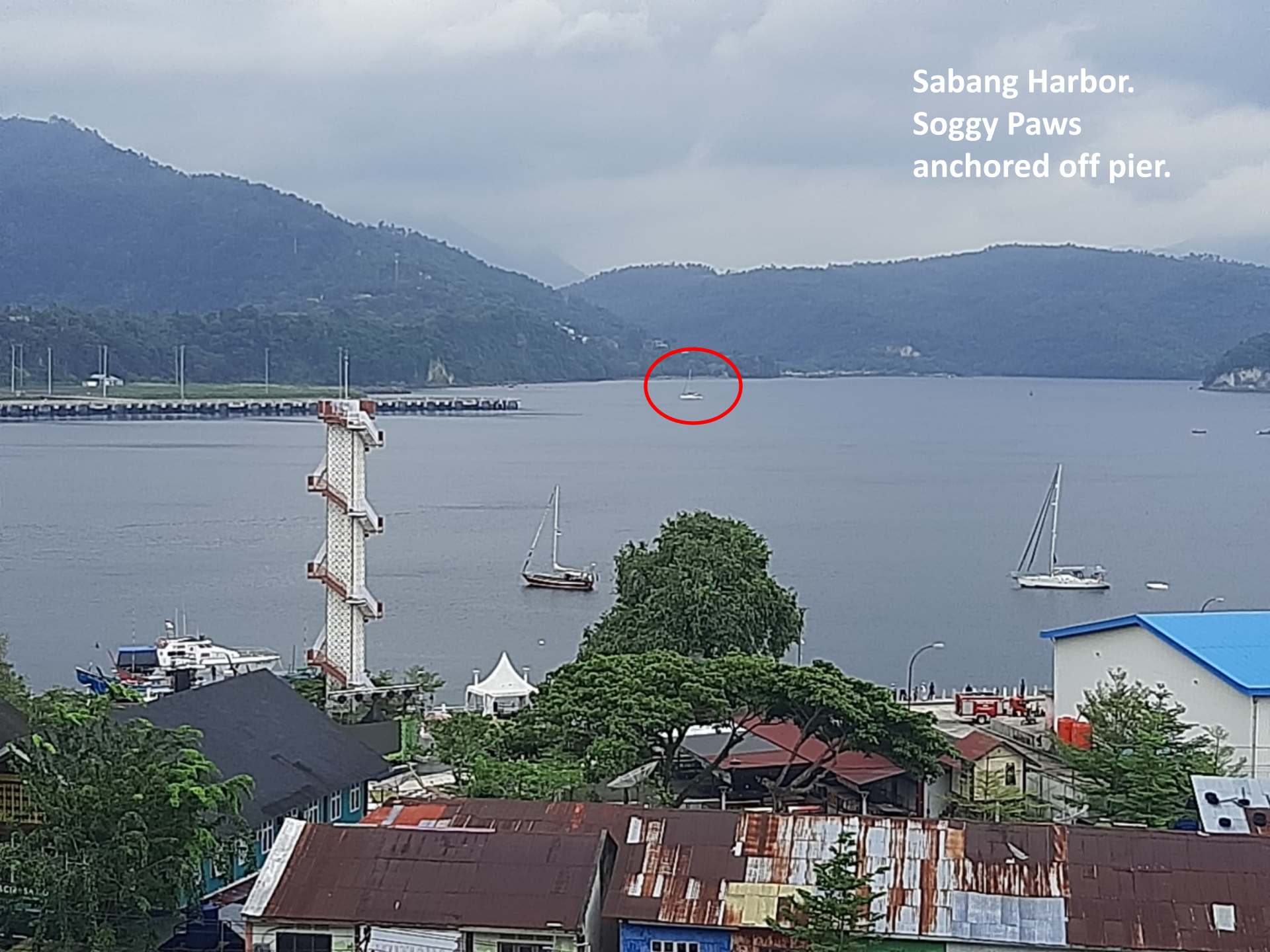
And Entertainment



**Day Trip
German shore gun,
one of seven**



Sabang Harbor.
Soggy Paws
anchored off pier.



**Saboi Volcano, (still smoking)
Sherry, Linda and our guide**



**One of many mosques
in Sabang**



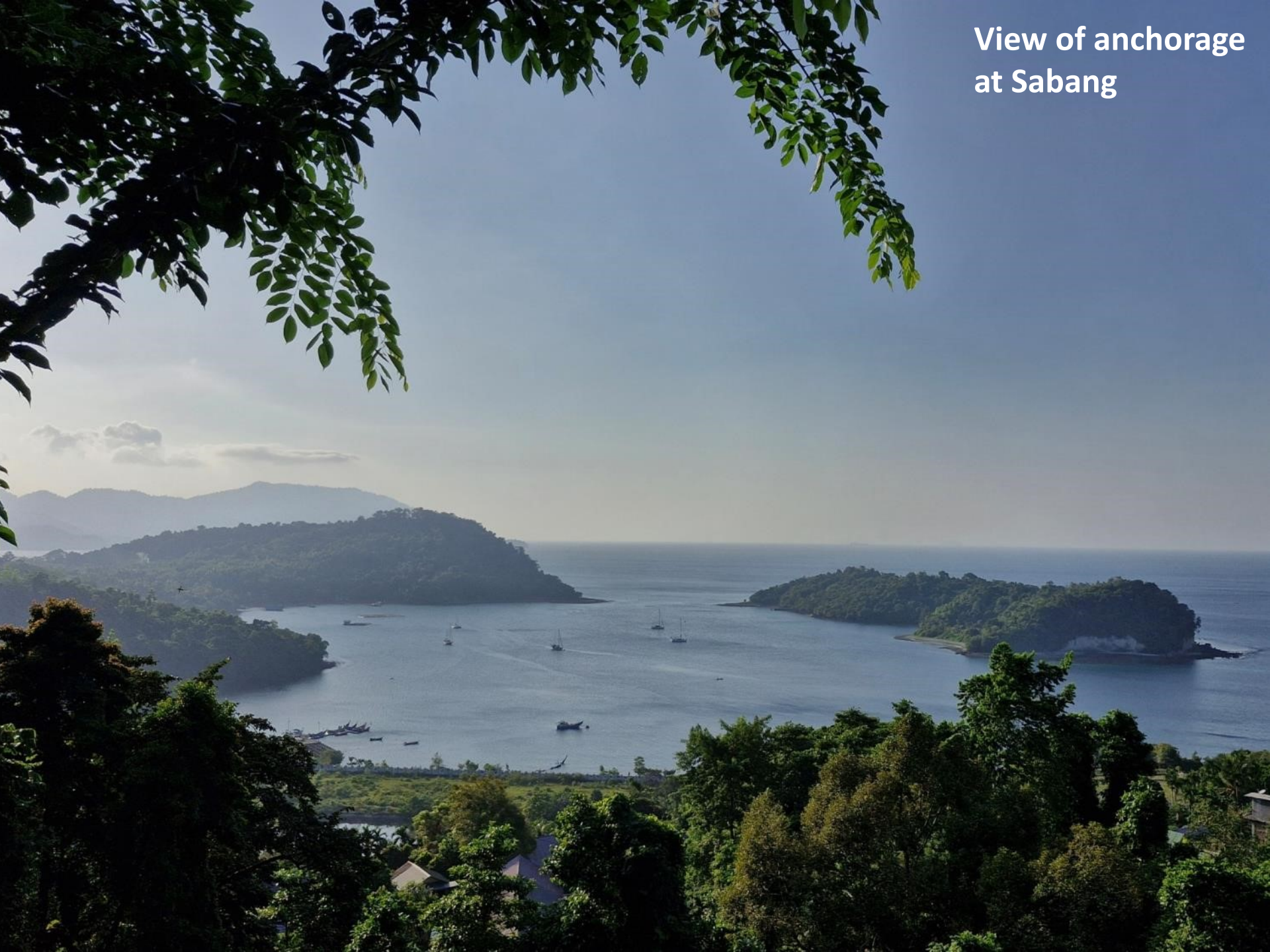
**Kilometer 0
NW point on Sumatra**





Sabang Waterfall Hike

**View of anchorage
at Sabang**





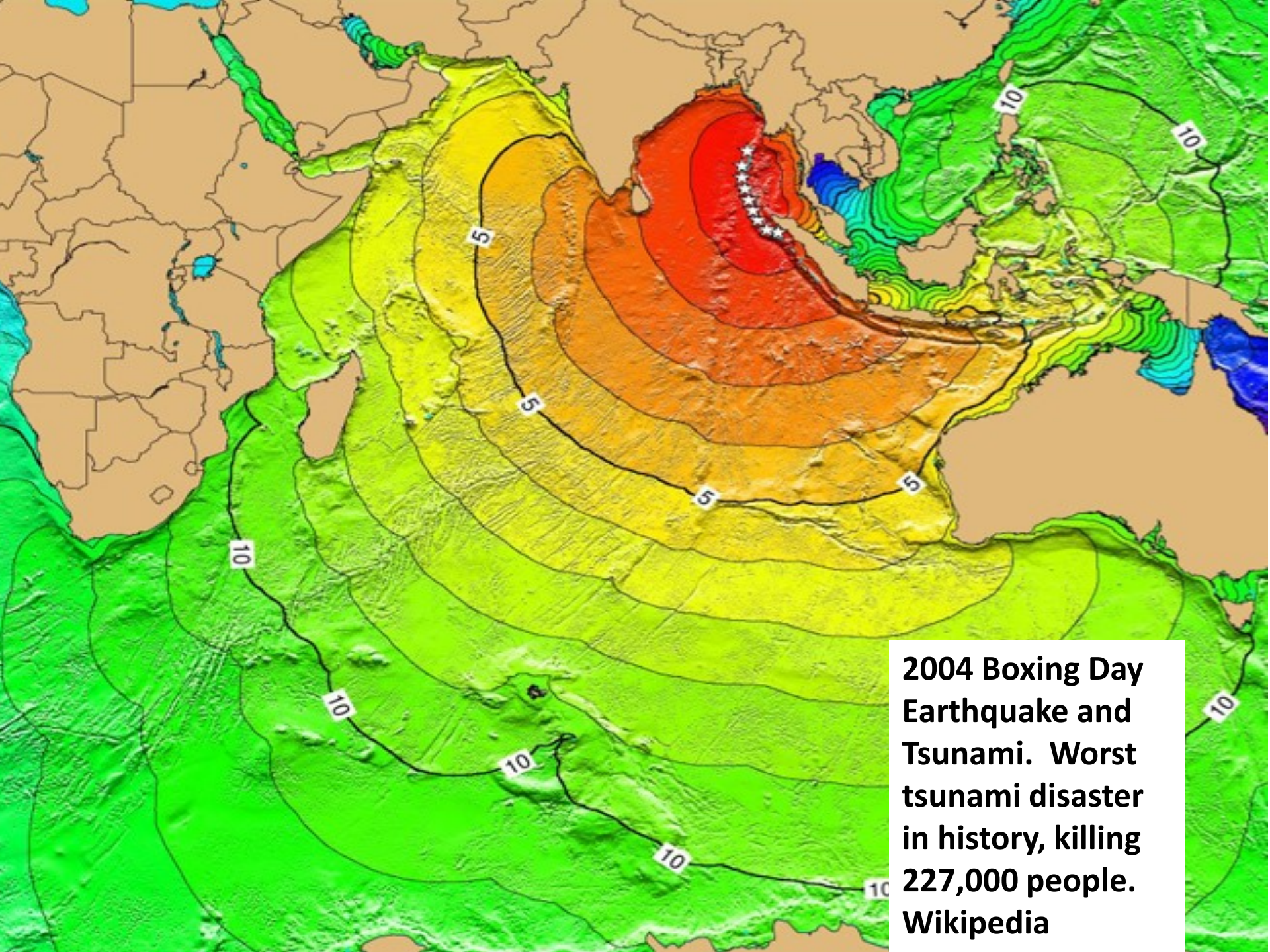
**Diving at Rubia
Tirta, Dorid
Nudibranch**

**Ribbon Eel at
Rubia Tirta**



2004 Tsunami Museum in Banda Aceh





2004 Boxing Day Earthquake and Tsunami. Worst tsunami disaster in history, killing 227,000 people. Wikipedia

Village on Sumatra coast inundated by huge tsunami waves. Wikipedia





Sumatra coastline
town obliterated
by tsunami.
Wikipedia

PASCA TSUNAMI

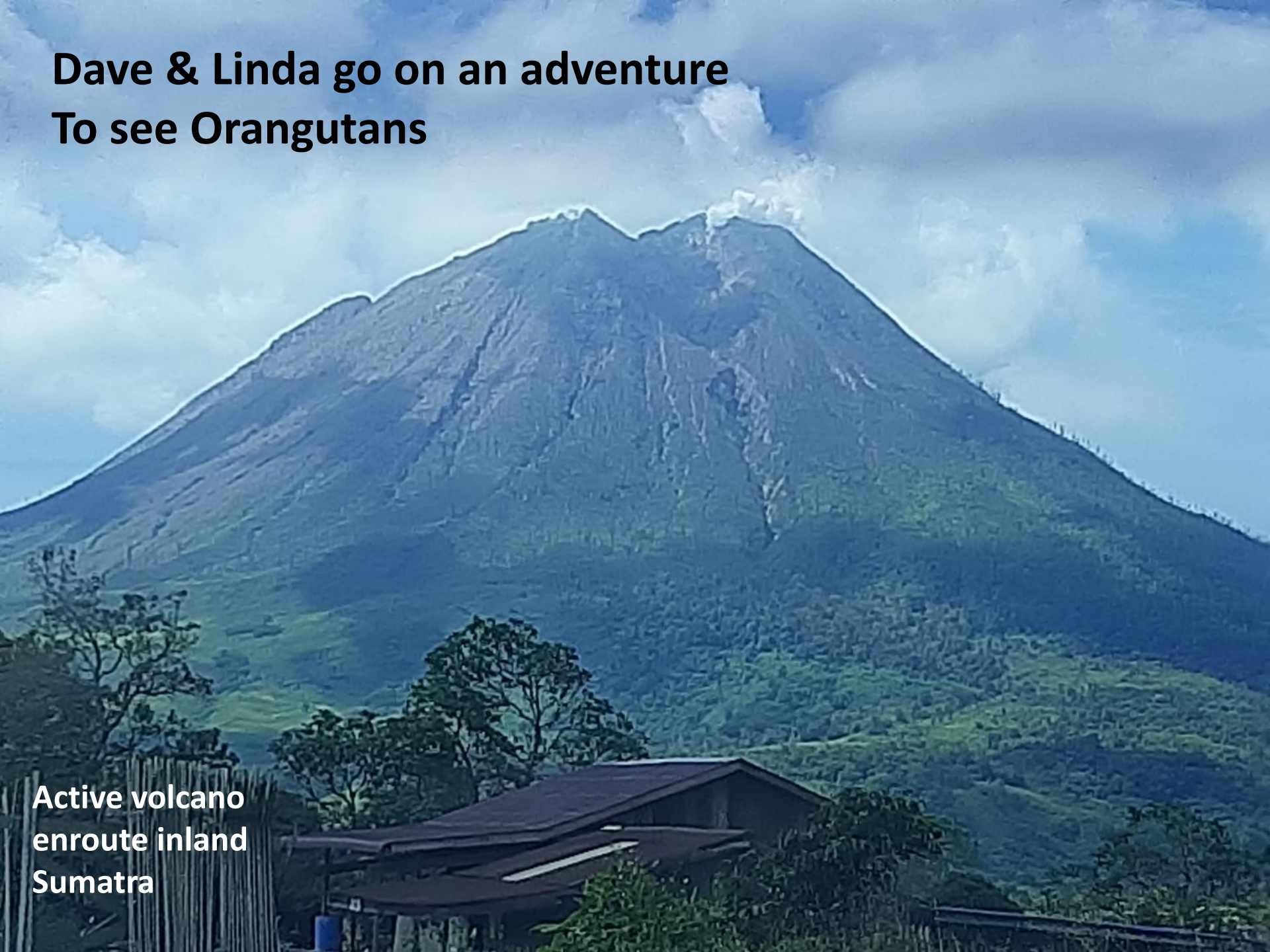
Photo of Banda Aceh after 100' high tsunami waves inundated city



Terlihat Bangkai kendaraan roda empat yang hancur terbawa arus tsunami seperti pada gambar dan posisinya dipinggir pantai

The image shows the aftermath of a tsunami in Banda Aceh, Indonesia, with a crushed red car and debris.

**Dave & Linda go on an adventure
To see Orangutans**



**Active volcano
enroute inland
Sumatra**



WELCOME TO
GUNUNG LEUSER NATIONAL PARK


Gunung Leuser
www.gunungleuser.org
National Park
World Heritage
Biosphere Reserves
Asean Heritage Park

Entrance to
World Heritage
Gunung Leuser NP
at Bukit Lawang



**Orangutan in
the wild along
the trail**



**Long tail Macaques
along the trail**



**Our guide helping
Linda to cross the
swift flowing river.**



**Our riverside
campsite**



**Our campsite
at river's edge**

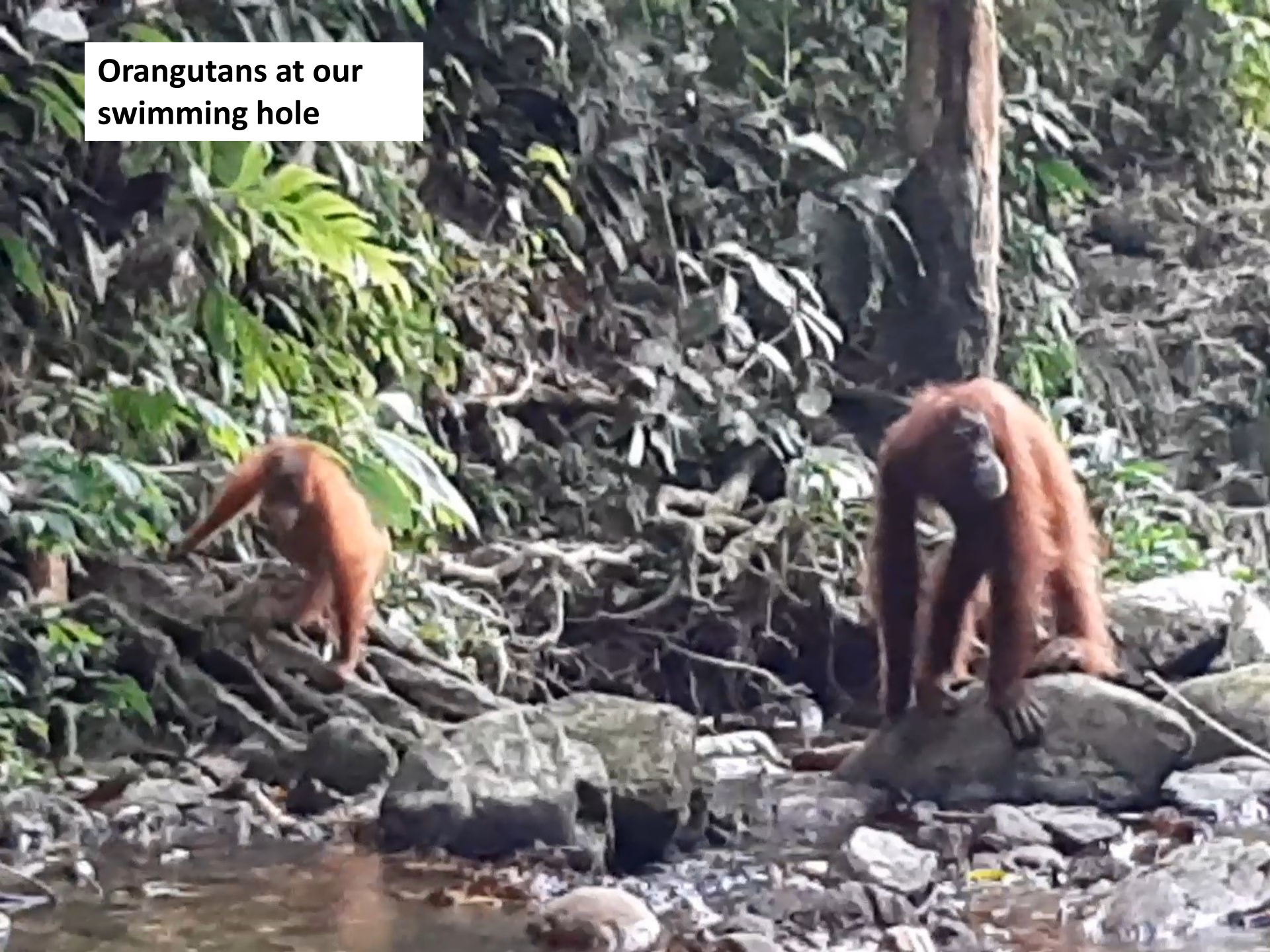


**Mom and baby coming
for a camp visit**



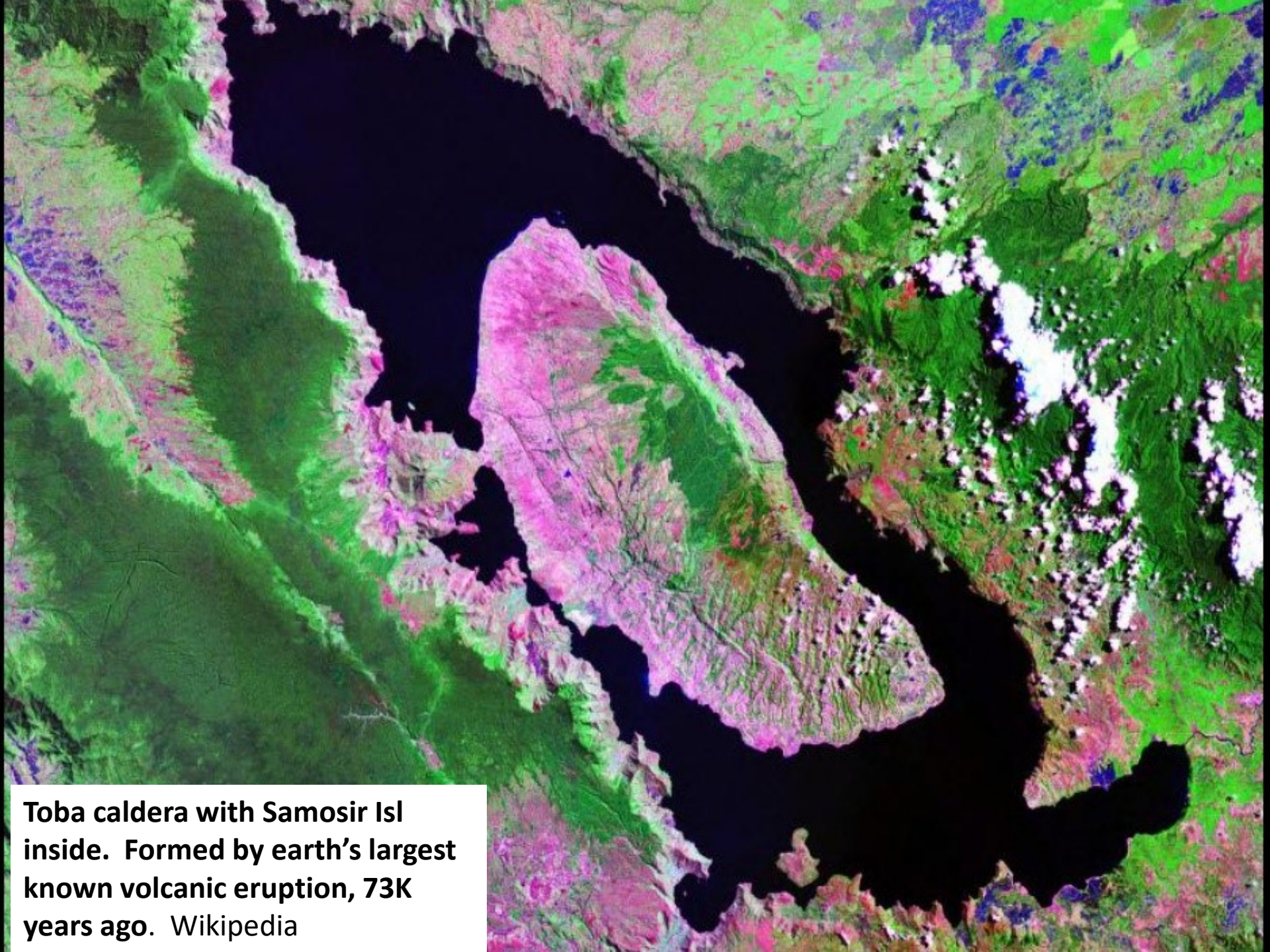
**Curious mother
Orangutan and
baby visiting
our campsite**

**Orangutans at our
swimming hole**





**Local transport back
down the river
through the rapids**



Toba caldera with Samosir Isl inside. Formed by earth's largest known volcanic eruption, 73K years ago. Wikipedia

Lake Toba

The caldera of
Earth's largest
volcanic explosion,
60 x 20 miles x 1700'
deep. Wikipedia



**Local houses on the
edge of Lake Toba.
Wikipedia**



**Shack on the edge
of the caldera with
a killer view**





**On our way south along the west coast of Sumatra
Happy Hour in a calm anchorage**





**An Indo Army
outpost on one of
the islands along
the way**

**The Indo
Army visits
a US vessel**







Lots of “Surf Camps”
along the way.
We had dinner out
here



Dinner ashore
with a view of
Soggy Paws



Deserted island
beaches are
perfect for BBQ
afternoons ashore





One of many giant
local fishing boats we
saw along the way

**View from the top of an
abandoned lighthouse**



Negotiating for mud crabs with local fisherman in Indonesian





Sherry with live dinner

**Dinner for two, that's
a full size plate!**





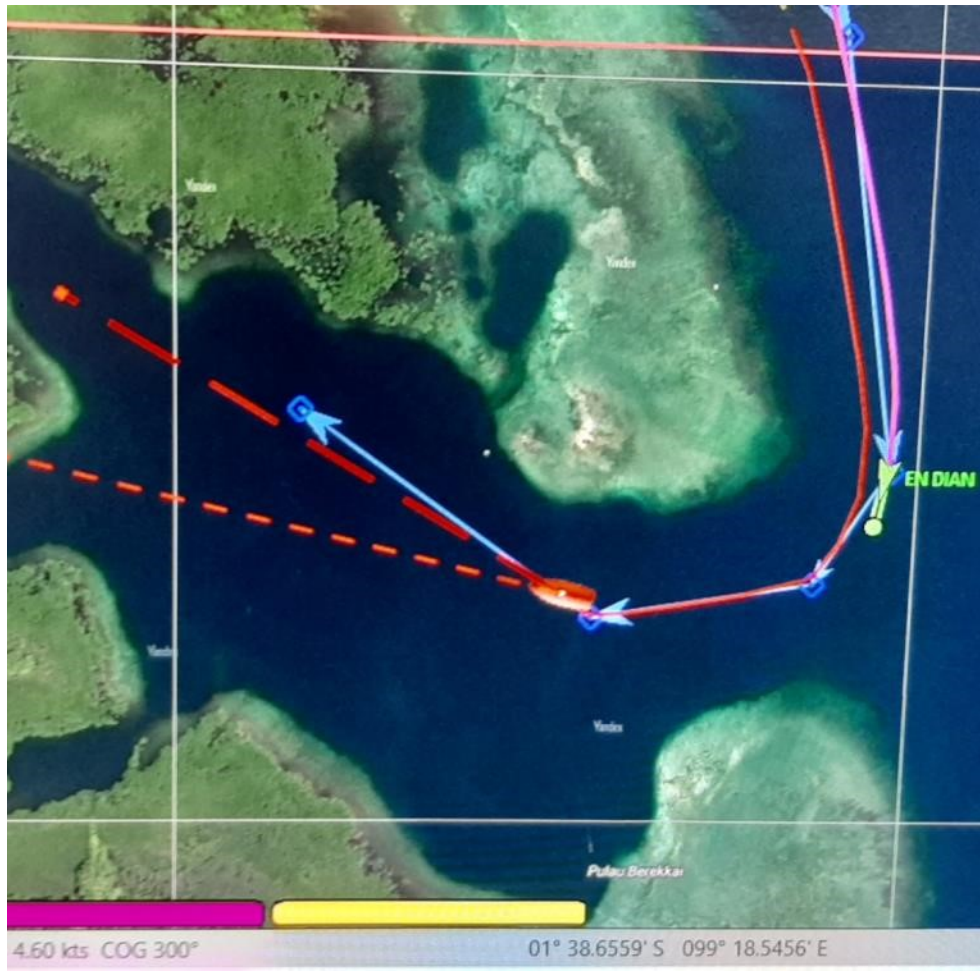
Colorful local fishing boats, now we can see them on our new Halo radar

GPSmap 526s



GARMIN

Why we use OpenCPN satellite charts for precise navigation in remote locations

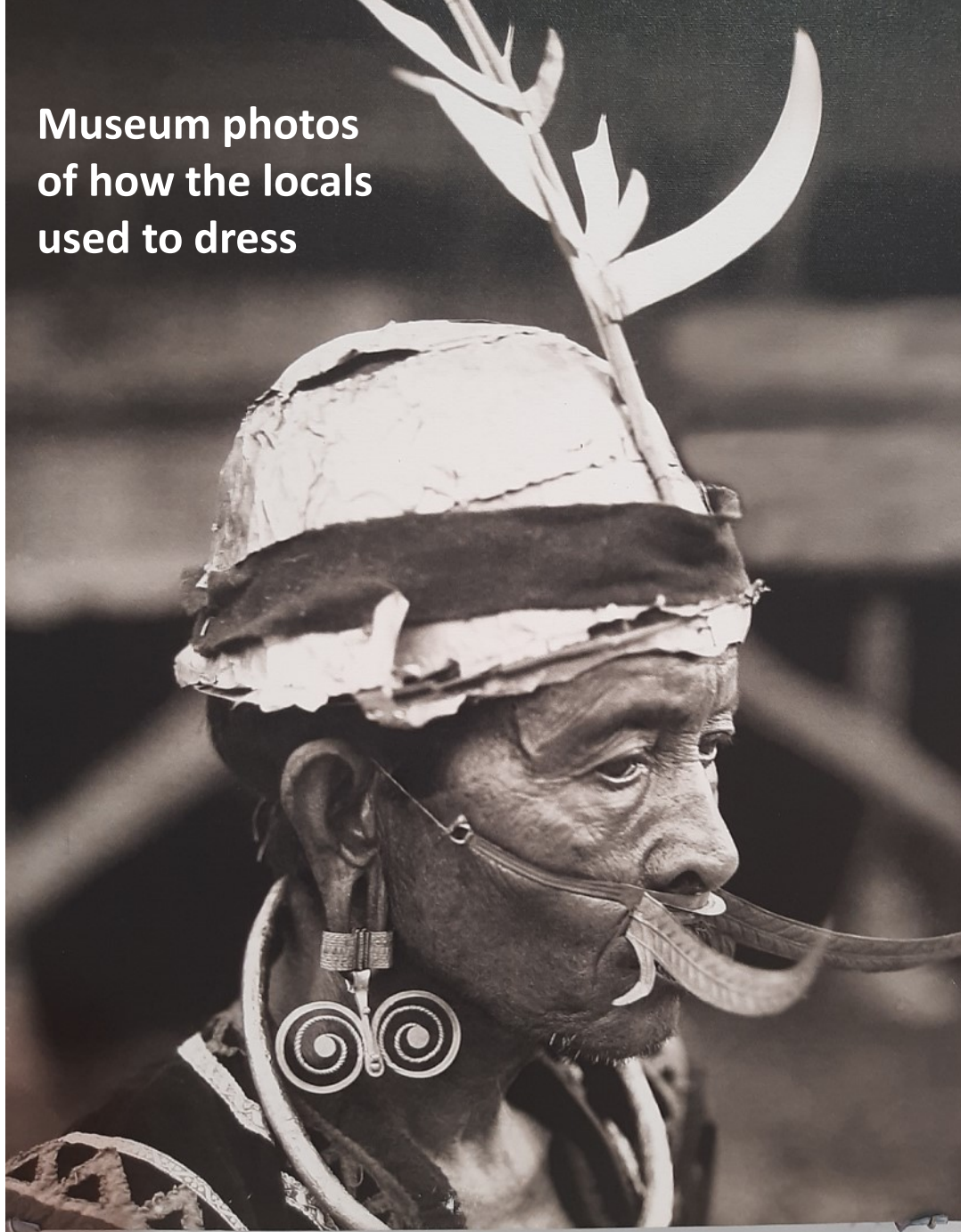


And the Garmin GPSmap bottom profiling sonar for anchoring

School kids happy to meet some foreigners



Museum photos
of how the locals
used to dress



Teenagers ready for
battle, late 1800s?



Bawomataluo Village Nias Island



Inside the Chief's House







Trees in the water.
Cause probably
shifting/sinking
plates from 2004
earthquake tsunami





Meeting the locals on
a river dinghy trip



Fishermens' Happy
Hour and dinner
together

Many Wind-less Miles
Later, we Enter the
Sunda Strait



Krakatoa Volcano

**Actual photograph during
the Krakatoa volcano
eruption of 1883.**

**Krakatoa caldera
exploded 27 Aug 1883
killing 36,000 people,
110' tsunami. Wikipedia**





Lithograph of the start of the final eruption on 27 August 1883 emitting loudest sound ever heard on earth at 300 db. It was heard 3000 miles away on Rodriguez island. Wikipedia

**This is “Son of Krakatoa” slowly
growing up since reappearing in 1930.
Photo from SV Soggy Paws.**



**Drone shot of Soggy
Paws in remains of
Krakatoa crater**





**Soggy Paws in front of
Son of Krakatoa crater.
Some day it will
probably explode again.**

vivo X70 | ZEISS
Apr 28, 2024, 12:30

**Through the Sunda Strait
And into Jakarta for a month**

- Sherry to 50th HS Reunion
- Dave & Linda Sightseeing in Java



Batavia Marina, Jakarta



A tight entrance and not much space for visiting yachts

Soggy Paws →





**Antique
shopping in
Jakarta**

An amazing
carving out of
a single tree
trunk





3 buildings, 6 floors
each of anything
mechanical or
electrical imaginable

LI DIESEL
NESTA
Indonesia | Linderes Trade Center Lantai G2 Blok E1 No.2 dan 3, Jalan Hayam Wuruk VII, Jakarta Barat 10010
GENERATOR-SET
LIGHTING POWER

PELANGI TEKNIK

PT PELANGI TEKNIK INDONESIA

DC INVERTER MMA WELDER
RedTap
DC INVERTER MMA WELDER
MMA-200

SUPER SILENT

Partially visible person in a white shirt sitting at a table.



**Jakarta Maritime History
Museum in old Batavia
warehouse buildings**

Interior displays of
JMH museum,
note size of beams



Jakarta Banking Museum



Dutch East India
Company VOC coins,
part of a huge coin
collection in the
museum



nta "Uang"
gin of "Uang"

Muasal
The Ori



Jakarta Historical
Museum



**Ancient Indonesian
Lantaka bronze cannon
on intricately carved
wood stand**

Jakarta Military History Museum



Torpedoes in
JMH museum



Jeep in JMH
museum



**Four hour train trip
east through Java to
Yogyakarta.**



**Lots of rice fields
along the way and
very little land
undeveloped**





More requests for photos of the foreign tourists with the locals in the city

Spectacular Borobudur Temple Complex

9th century Buddhist temple near Yogyakarta



Painting of Borobudur
in the 9th century,
Wikipedia



**Borobudur from
the air Wikipedia**



**Borobudur with active Volcano
Merapi in the background
Wikipedia**



Unesco World Heritage Site Hindu Temples of Prambanan



**Prambanan Temples
Unesco World Heritage
Site near Yogyakarta**

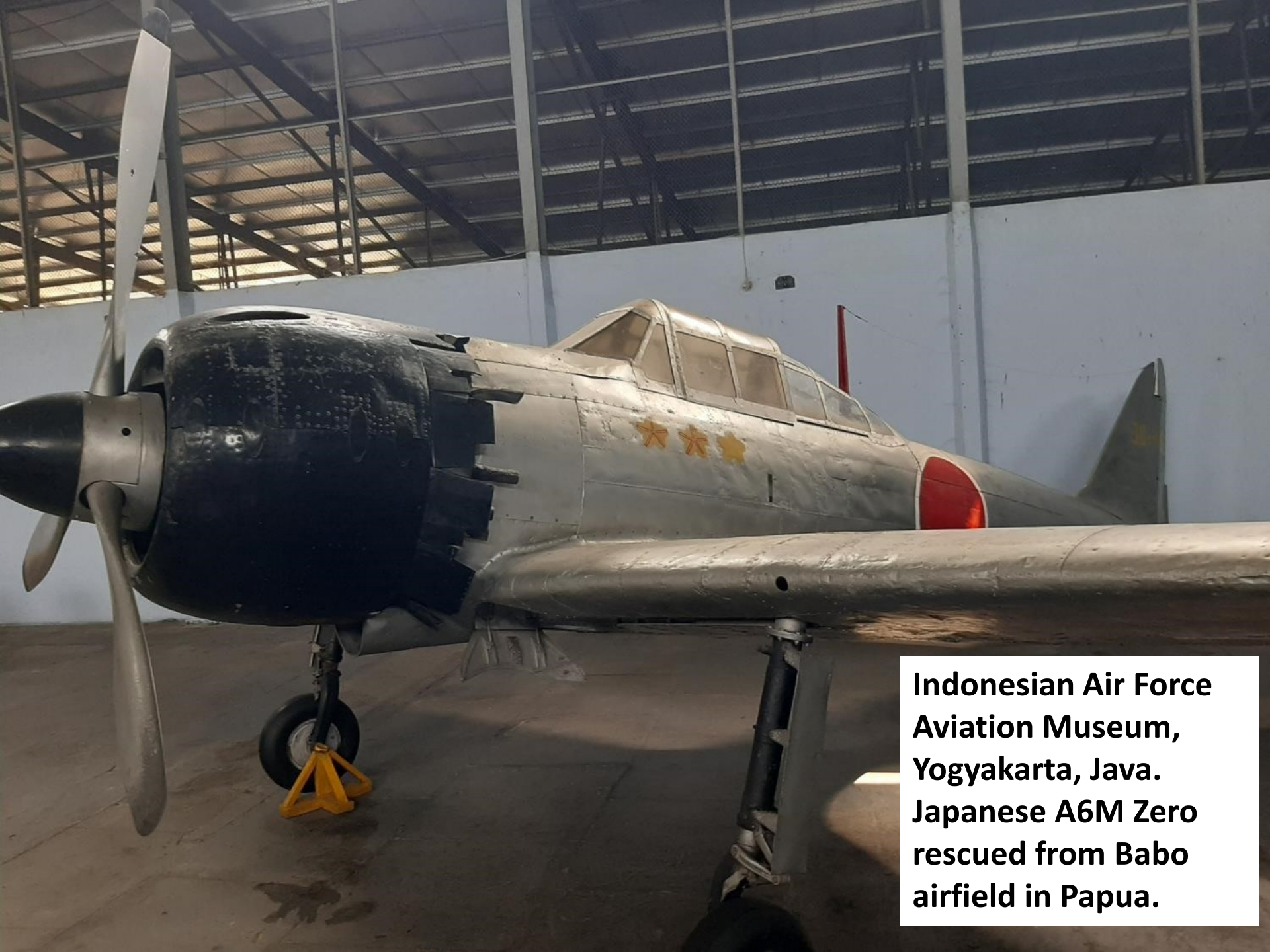




**One of many Prambanan
Temples**



Beautiful and extensive grounds of the Prambanan Temple complex. Unesco



**Indonesian Air Force
Aviation Museum,
Yogyakarta, Java.
Japanese A6M Zero
rescued from Babo
airfield in Papua.**

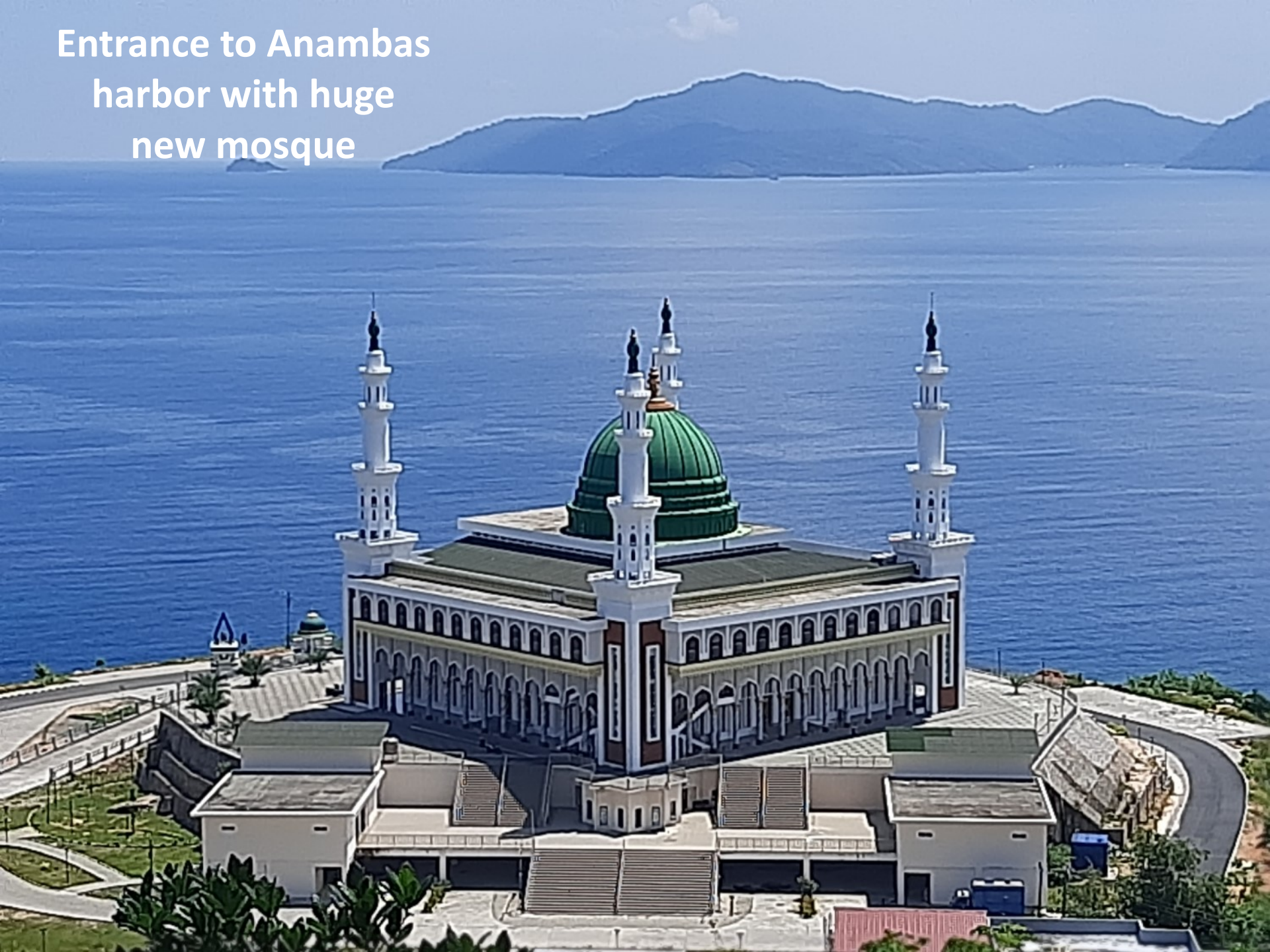


**US P-51 Mustang
at the aviation
museum**

**June 1: North from Jakarta
to the
Anambas Islands
via Belitung**
Several overnight hops



Entrance to Anambas
harbor with huge
new mosque



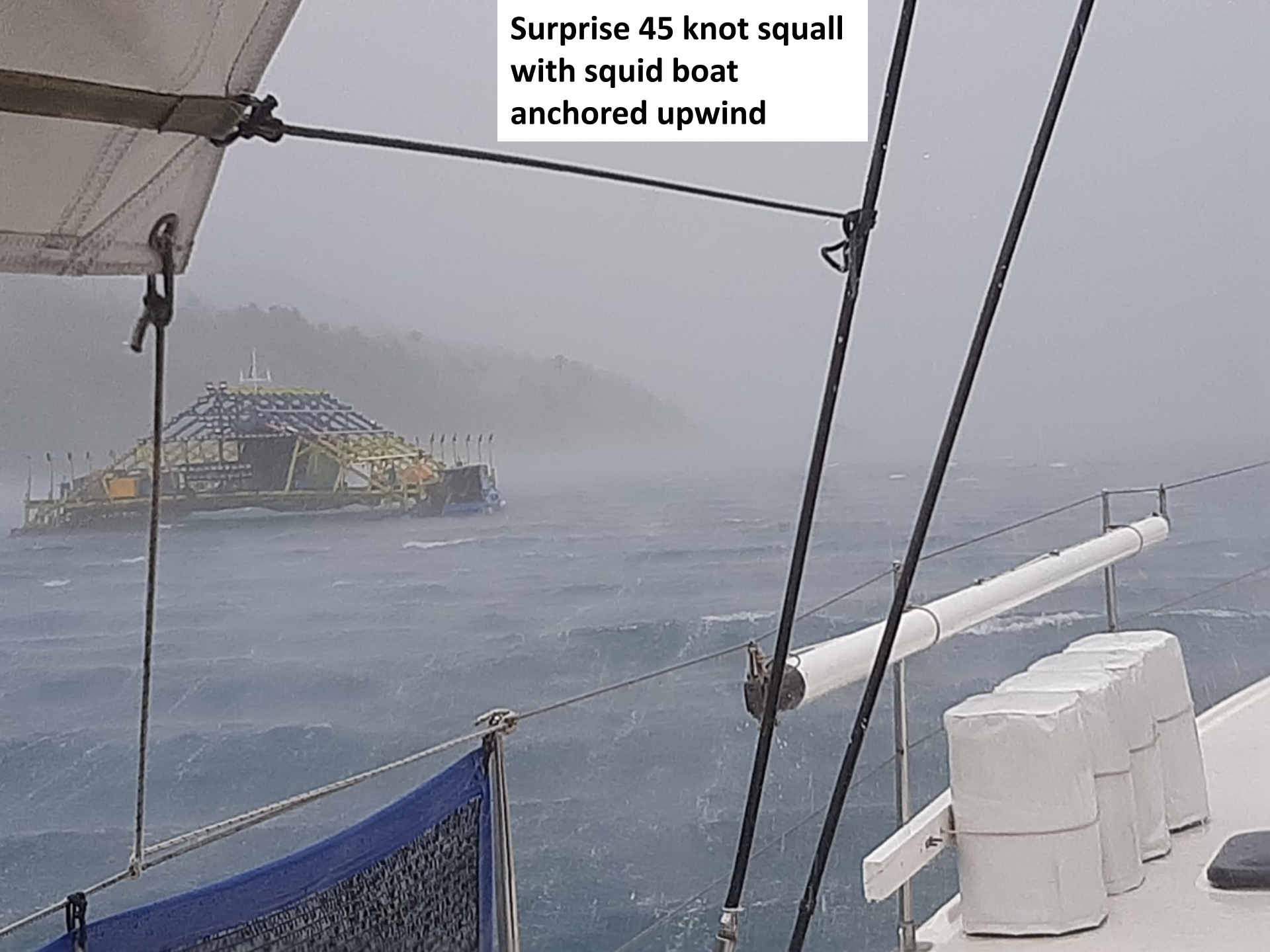
**Beautiful anchorages
but trashy beaches &
tons of plastic!**

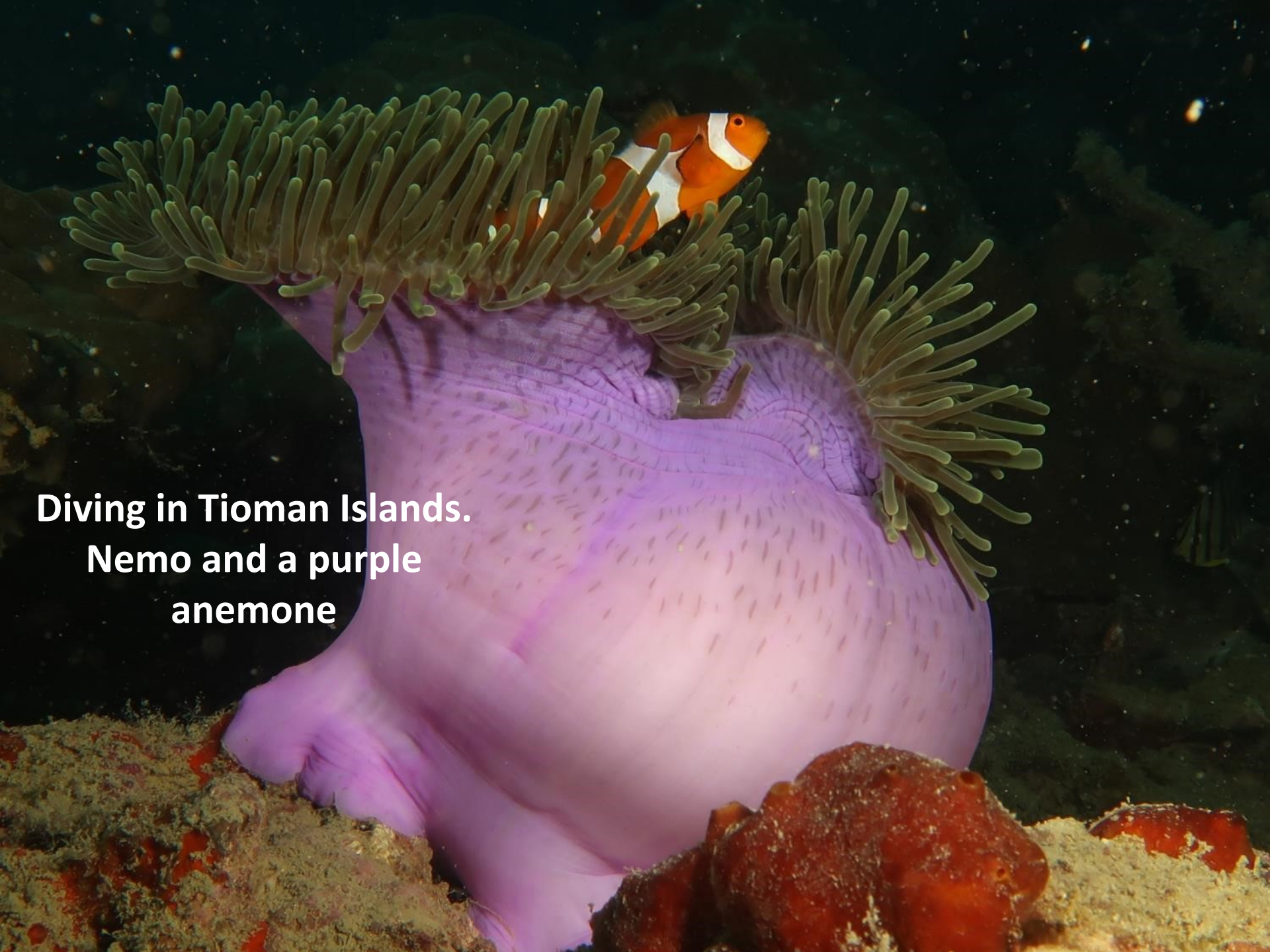




Sherry and friend/agent/guide Isky on our scooter tour of the island

**Surprise 45 knot squall
with squid boat
anchored upwind**



A clownfish with orange and white stripes is swimming near a large, purple anemone with many green tentacles. The scene is set underwater on a rocky reef.

**Diving in Tioman Islands.
Nemo and a purple
anemone**

**Nubibranch
hanky panky!**



Spotted Stingray
hiding in a cave





**Amazing Singapore!
Ten days at Changi Yacht Club
with friends**



**We finally meet
the famous
“Fatty Goodlander”**

**With Carolyn & Fatty
Goodlander at
Changi Sailing Club,
Singapore**



**Thailand to
Singapore via
Sumatra & Java
Cruise 2024,
4000nm**


Scale:  200nm



Mileage Summary

Last Updated: September 30, 2024

Follow the link for each year to see the map(s) and details.

	Sea Miles	Engine Hours	Pure Sailing Hours	Total	On Passage	Nights Anchored Out	In a Marina	On a Mooring	Nights off Boat	
									Inland Travel	In US
 2024	3,957	616	99	365	8	178	165	25	15	62
Total	56,463	6,751	4,548	6,064	259	1,896	2,580	1,214	482	981
Annual Average	3,321	397	268	365	15	112	152	71	28	58

For the full summary since 2007:

<https://svsoggypaws.com/mileagesummary.htm>



The end of a
long journey



**Soggy Paws
2025 Plan?**

The End



<http://svsoggypaws.com/presentations.htm>