

Exploring Palau



Dave & Sherry McCampbell
www.SVSoggypaws.com/Presentations

Update 3-25-2020



UNESCO World Heritage Centre





990 x 742



SV Soggy Paws Florida to the Philippines

PACIFIC OCEAN

ASIA

NORTH AMERICA

2007

Philippines

F.S.M.

Palau 2014

Marshall Islands 2013

Tarawa

Samoas

Fiji 2012

Tonga

Hawai'i 2011

2011

French Polynesia

Pitcairn Islands

2008-09 Galapagos

2010

Easter Island

SOUTH AMERICA

AUSTRALIA



~30,000 nm



Why Micronesia

- **On the way West, avoids going to New Zealand.**
- **Fathers both career Naval aviators.**
- **Dave there in 1989 with US Navy dive team.**
- **Interest in Scuba diving, shipwrecks and aviation.**
- **Tom Cleaver's book Fabled Fifteen (Dave's Dad's Air Group on Essex) coincided w/ start of our trip**
- **Our arrival in Majuro, RMI same date, 10 May, as Dave's Dad's arrival in Majuro 69 years earlier.**
- **Boonies cruising, got better and better as we went along.**
- **Total of almost 2 years exploring S Micronesia, Marshalls to Palau via FSM.**

Soggy Paws Trip Through Southern Micronesia, RMI to Palau, Jan-May 2014



Short Palau/Peleliu History

- 2500 BC- first populated by Philippine migrants
- 1522- Magellan first European to sight Palau
- 1600-1800s- Spanish influence in East Indies
- 1899-1914- bought from Spain by Germany
- 1914-1944- Japanese 'mandated' occupation
- 1941-1944- Koror headquarters, Peleliu airbase
- 1944 Sep- Nov- US landing/battle for Peleliu
- 1947-1981- US Trust Territories of Pacific
- 1981- Republic of Palau independence
- 1989- My visit with Mobile Diving & Salvage Unit One & US National Park Service, ten weeks diving
- 1994- Compact of Free Association with US
- 2014 & 2016- Cruising/diving visits on Soggy Paws

World War II Pacific Theater 1941-45

Fleet Tracks (blue) & Major Assaults (yellow)



the Battles of the Philippine Sea (June 1944) and Leyte Gulf (October 1944). MacArthur's and Nimitz's campaigns merged into one for the invasion of the Philippines. Afterwards the Central Pacific campaign continued with the invasions of Iwo Jima and Okinawa.

**Nimitz
PacFlt**

**Spruance 5th
Halsey 3rd
Fleets**

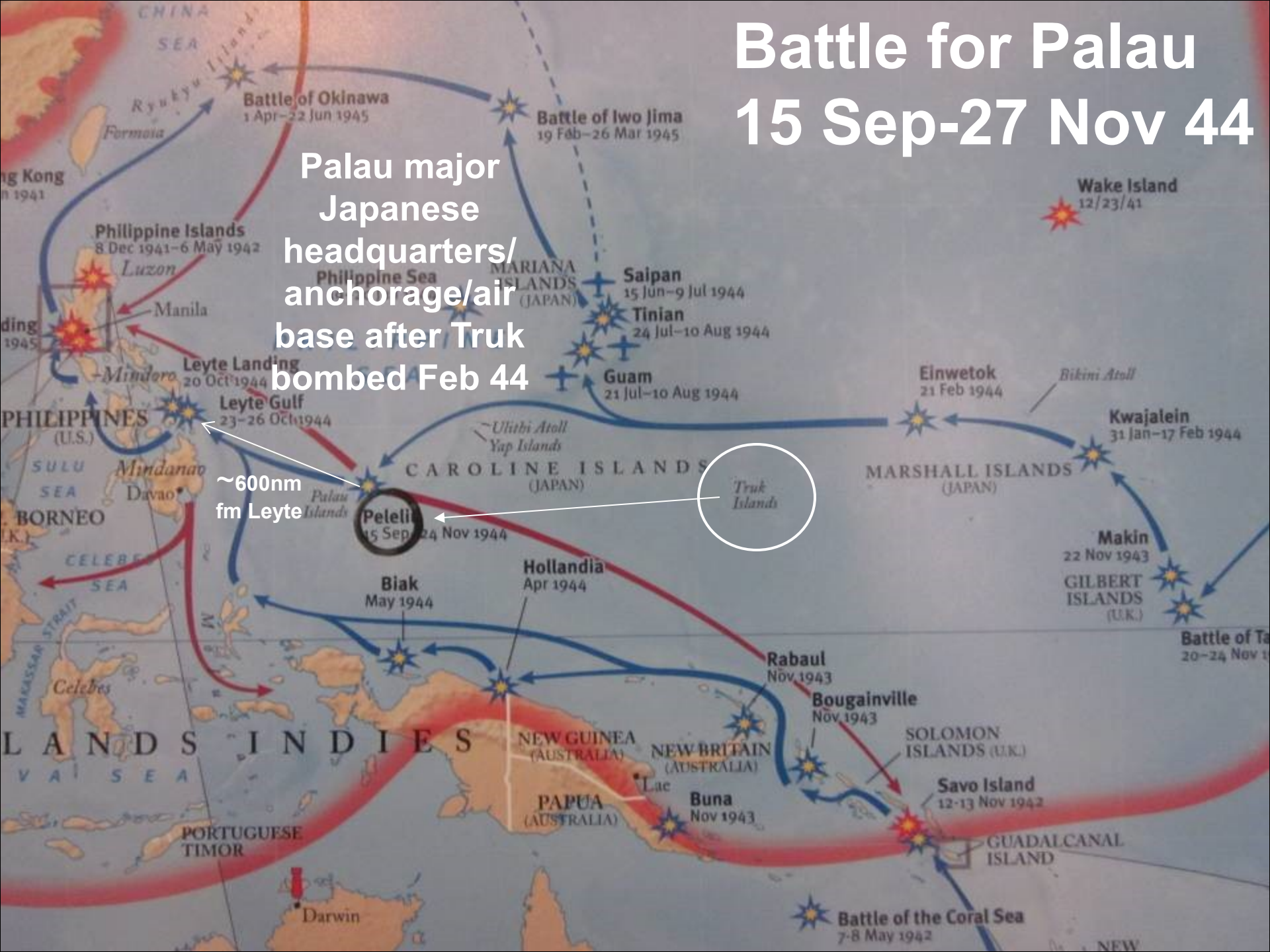
**MacArthur PacSW
Ghormley, Halsey,
Kinkaid 7th Fleet**

Battle for Palau

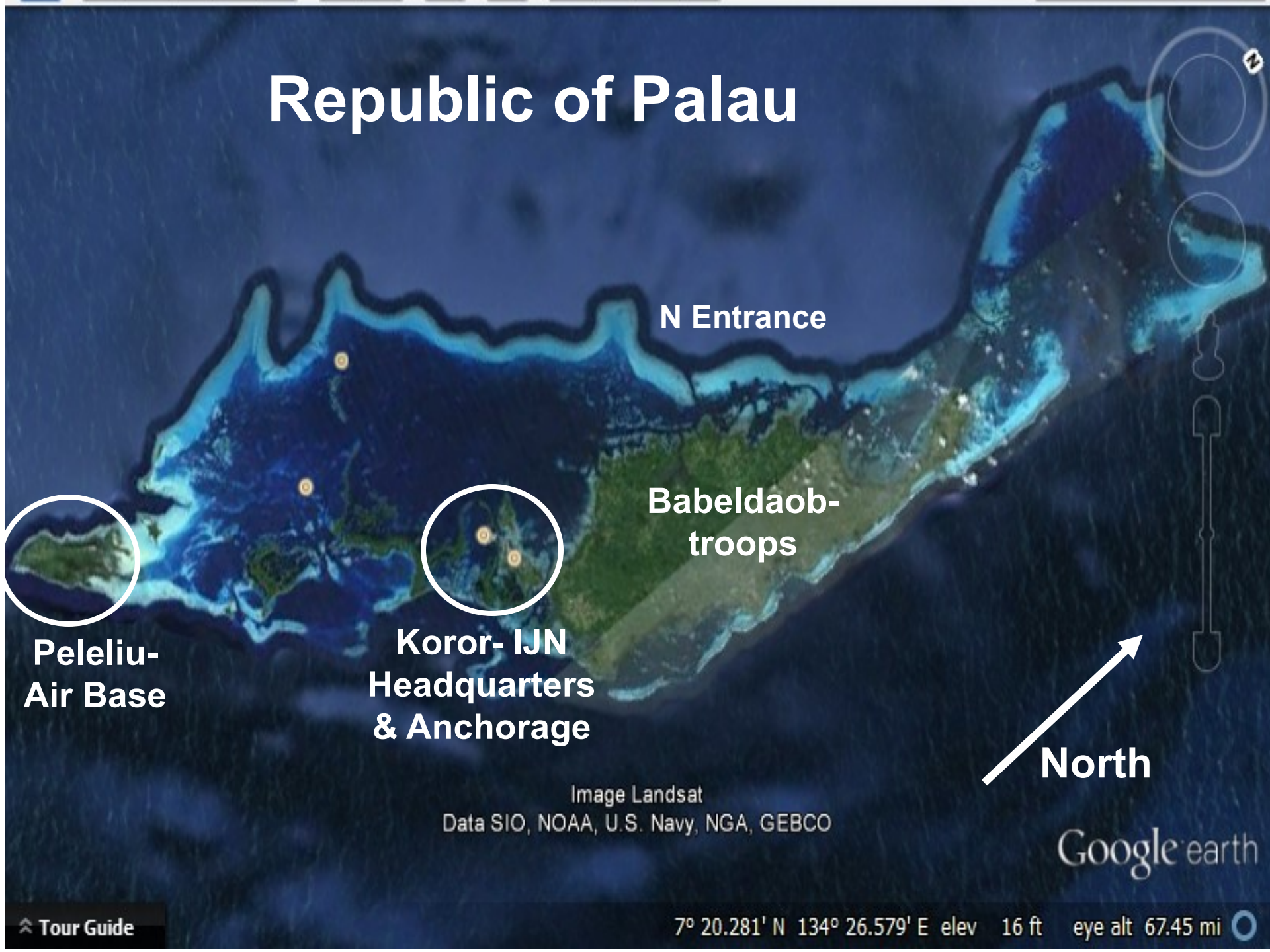
15 Sep-27 Nov 44

Palau major Japanese headquarters/anchorage/air base after Truk bombed Feb 44

~600nm fm Leyte



Republic of Palau



**Peleliu-
Air Base**

**Koror- IJN
Headquarters
& Anchorage**

**Babeldaob-
troops**

N Entrance

North

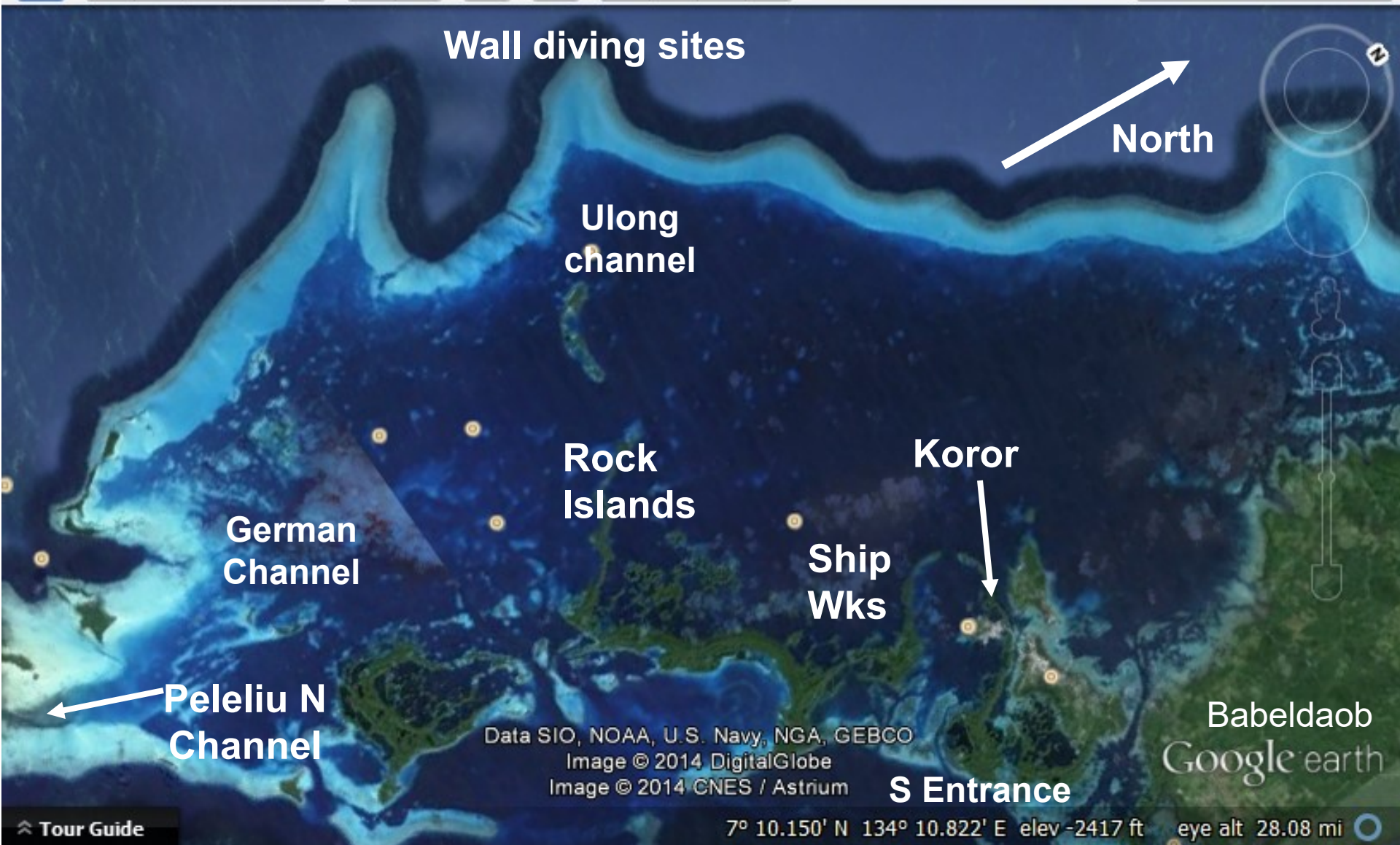
Image Landsat
Data SIO, NOAA, U.S. Navy, NGA, GEBCO

Google earth

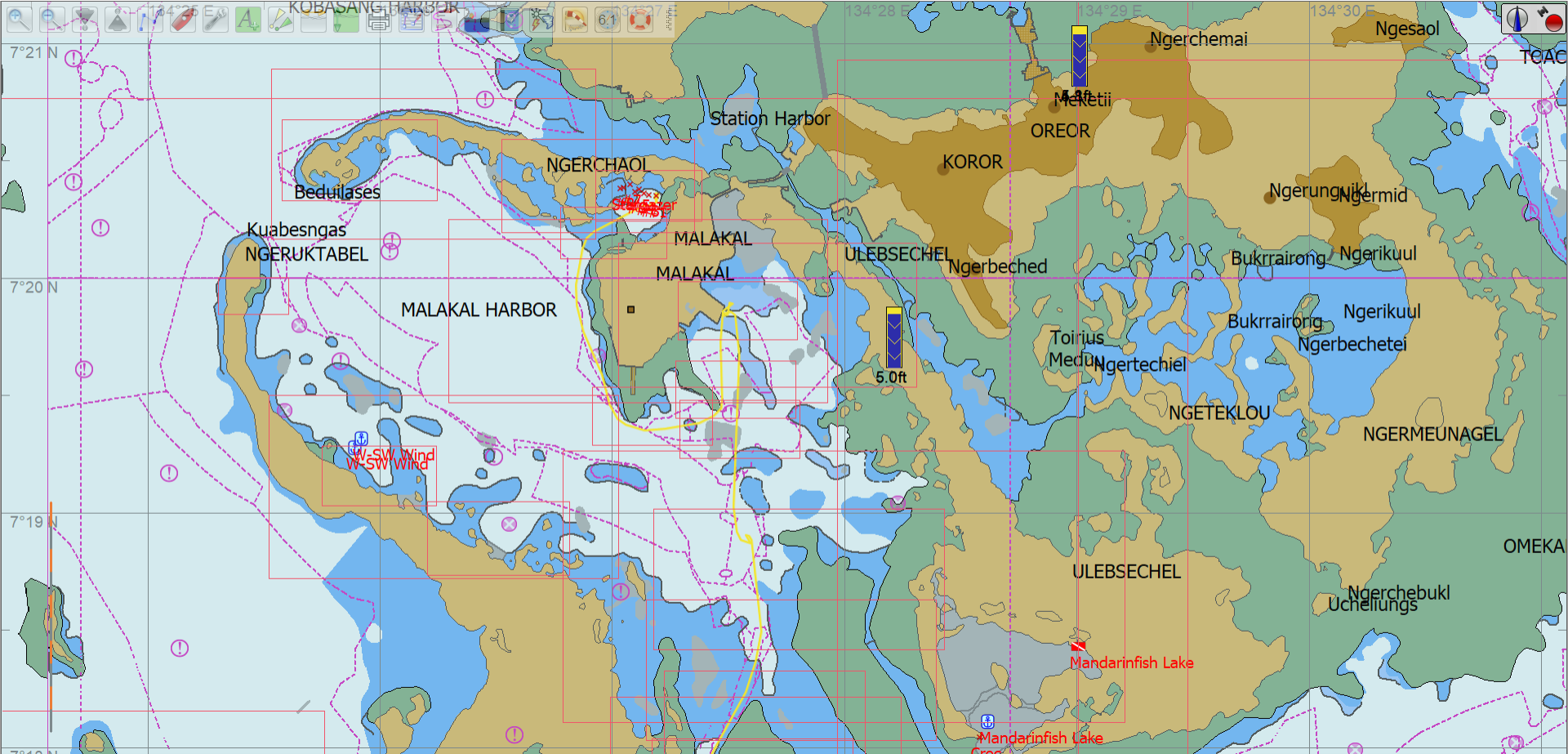
Tour Guide

7° 20.281' N 134° 26.579' E elev 16 ft eye alt 67.45 mi

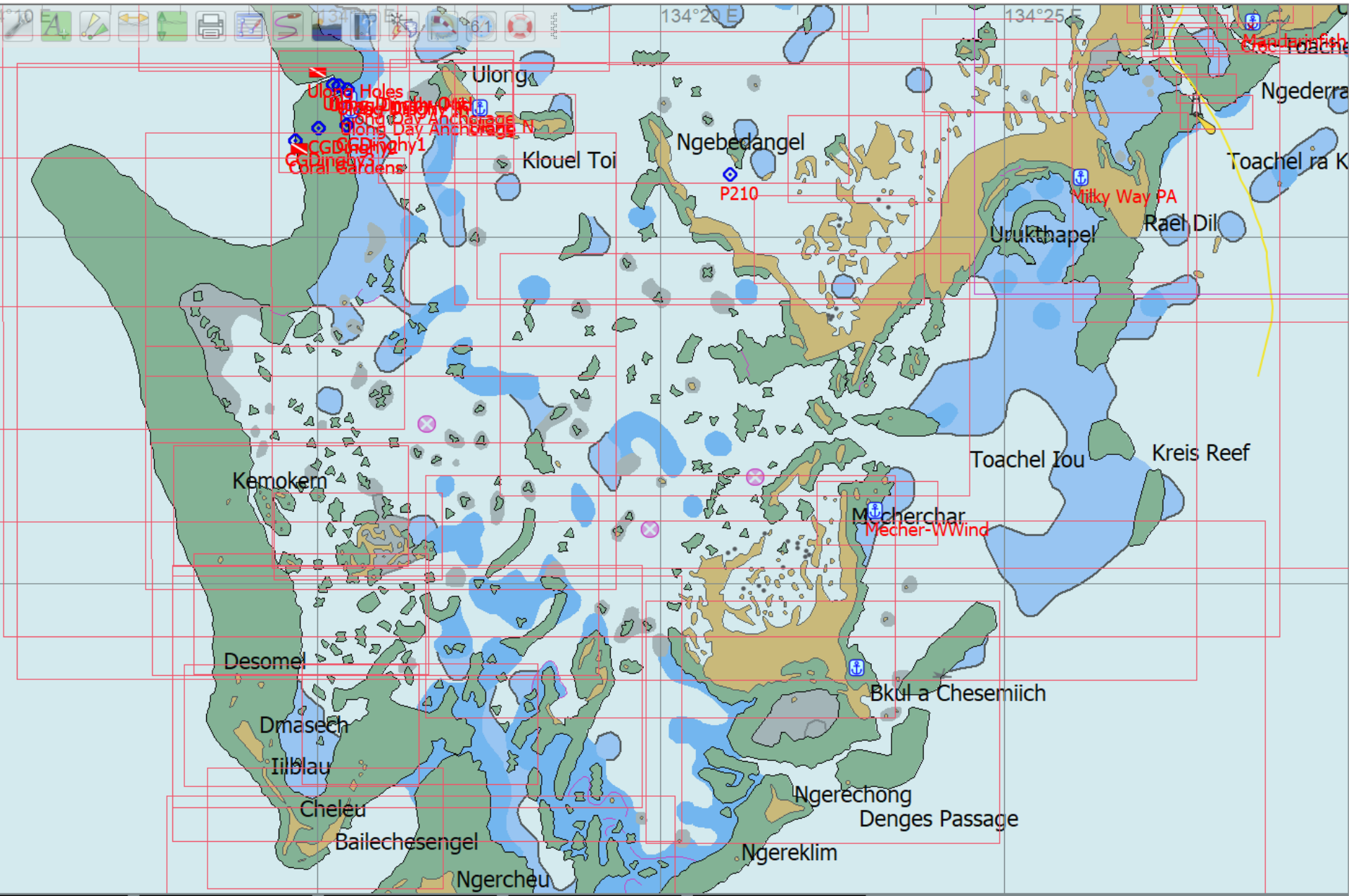
Koror & Rock Islands



Malakal Harbor and Koror



Southern Palau and Rock Islands



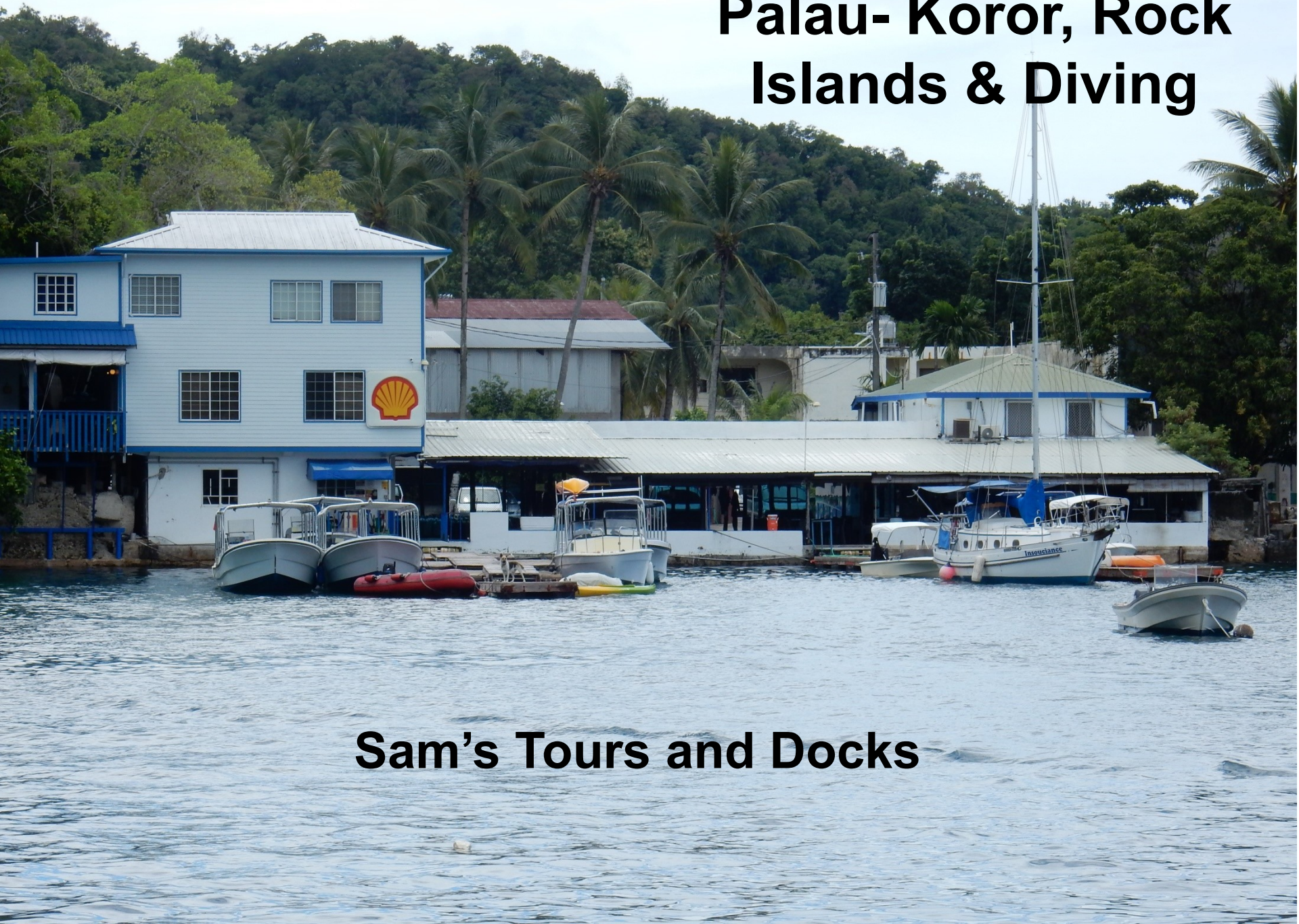


Noonsite.com Palau Fees

September 17, 2019.

- 1 The new fees relate to **all foreign-owned vessels** entering Palau waters including private yachts and cruise ships.
- 2 Private yachts of **less than 40 ft** – US\$250 for 30 days, \$1000 for the second 30 days and \$2000 for the subsequent 30 days.
- 3 Private yachts **over 40 ft but less than 90 ft** – US\$500 for the first 30 days, \$1000 for the second 30 days and \$2000 for the subsequent 30 days.
- 4 The tax will be **incrementally implemented** so that in the first year following the effective date of the new Act, the Republic will assess 50% of the tax amounts; in the second year the tax will be assessed at 75% and in the third year the full tax amount will apply.
- 5 The maximum length of stay for private yachts in Palau is 90 days. Application must be made to the Bureau of Customs and Border Protection to stay longer than three months.
- 6 Fees can be paid by credit card and are payable to the Bureau of Customs and Border Protection on arrival in Palau.

Palau- Koror, Rock Islands & Diving



Sam's Tours and Docks



**Sam's Tours
mooring field**



**Sam's Tours
moorings**



**Chandelier
Cave**



**Famous Japanese Gun
Cave just outside Koror
Harbor**

Japanese twin 20mm anti-aircraft gun in Koror town



**Massive
Japanese
150mm
Shore Gun
on trail to
German
Lighthouse**





**Old Stove on
German
Lighthouse Trail**

Kevin inspecting unexploded 6" armor piercing rounds inside cave on German lighthouse trail



Palau's Rock Islands



**Clear water &
sky, diving off
the Rock
Islands**



On the way to the Rock Islands



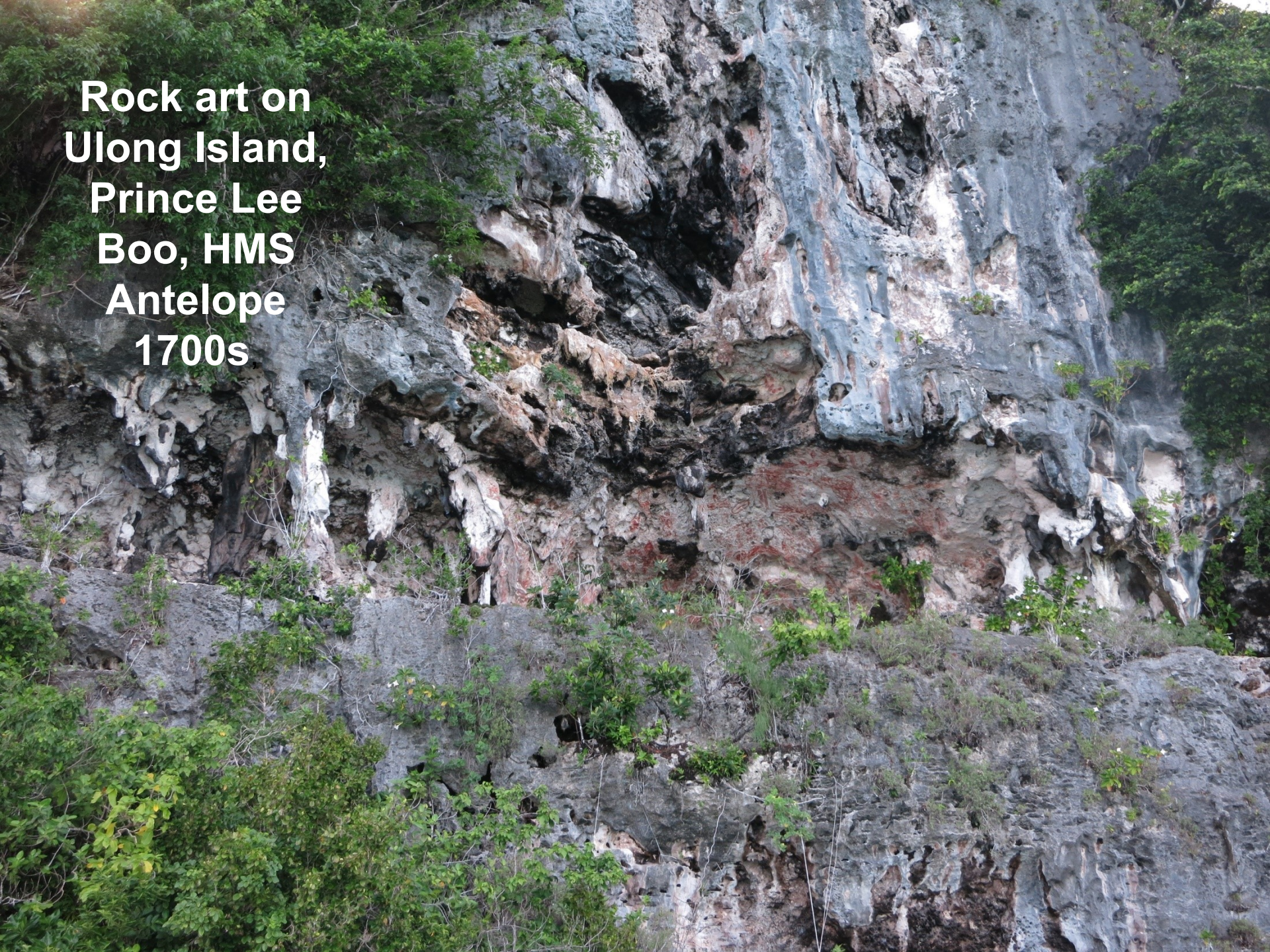
Rock Islands by Dive Boat, Palau Dive Adventures



A photograph of a tropical river scene. The water is a vibrant turquoise color, with white foam from a boat's wake visible in the foreground. The river is flanked by dense, lush green forest. A large, dark tree trunk is visible on the left bank, and a large rock formation is on the right. The sky is bright, and the overall atmosphere is serene and natural.

**Secluded Rock
Islands
anchorages**

**Rock art on
Ulong Island,
Prince Lee
Boo, HMS
Antelope
1700s**



Japanese Fuel Drum Cave



Wreck Sites



**Bichu Maru
Stbd Side**

A6M Zero
engine

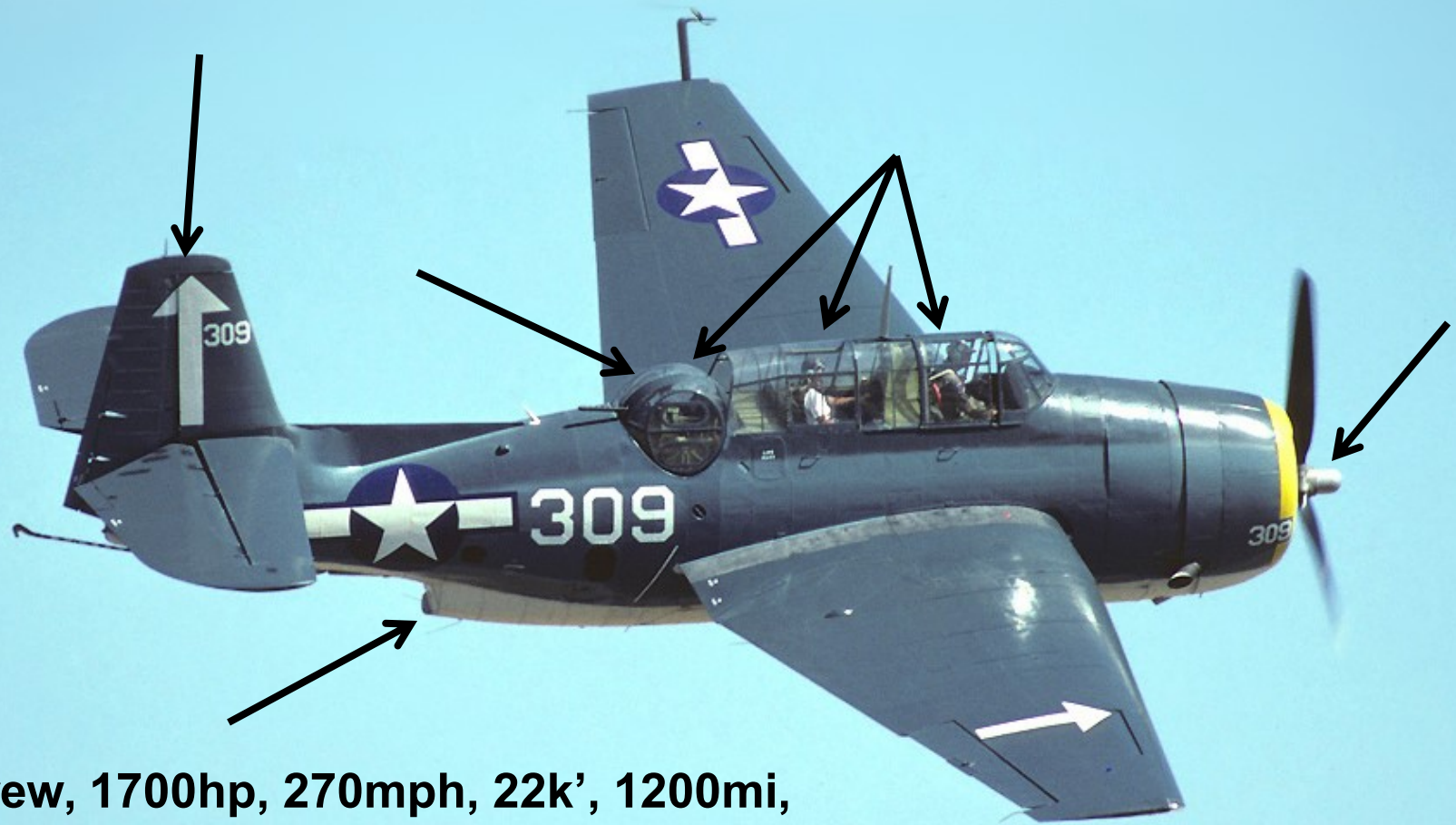


**Sherry sez: where are we
and what the heck is this?**


**Bichu Maru
Ceramic**



Grumman TBF/M Avenger Torpedo Bomber



**3 crew, 1700hp, 270mph, 22k', 1200mi,
3x50 cal, internal torp, bombs, 9839ea**



**TBF/M
Avenger
Torpedo
Bomber
Engine,
found 1989**

**Iro Maru
Light Globe
Cages**



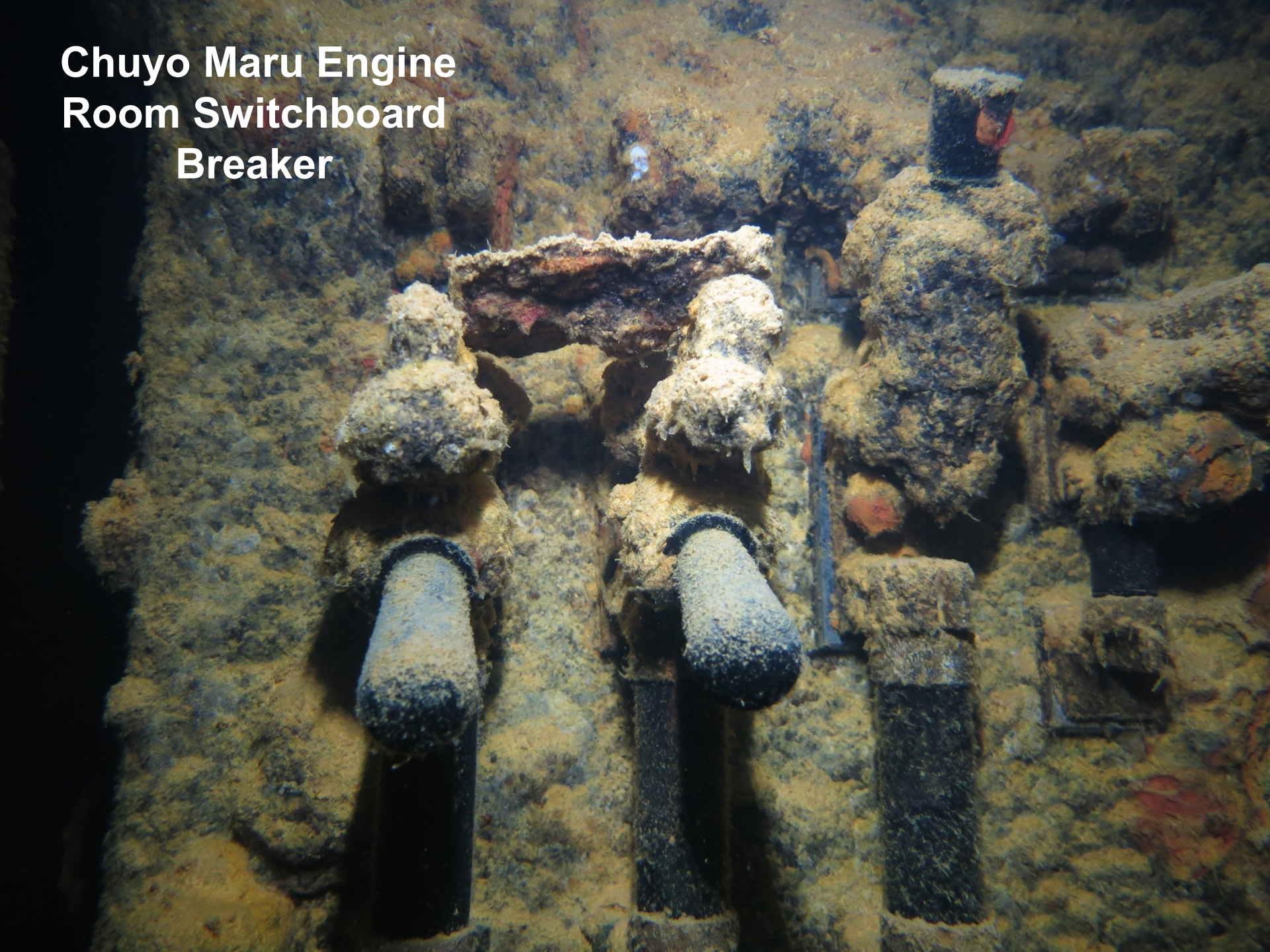
Iro Maru Bathing Tub



**Chuyo Maru
Engine Room
Ladders, Sunk
1 April 1944**



**Chuyo Maru Engine
Room Switchboard
Breaker**



**Chuyo Maru
Engine Room
Valves**



**C Chuyo Maru
Head Sink
Valve**



Aichi E13A Jake Reconnaissance Float Plane



**3 crew, 1100hp, 234mph,
29k', 1300 mi, 1x20mm &
1x7.7mm guns, bombs,
depth charges, 1418 ea**

E13A Jake Float Plane



**E13A Jake
Reconnaissance
Float Plane**



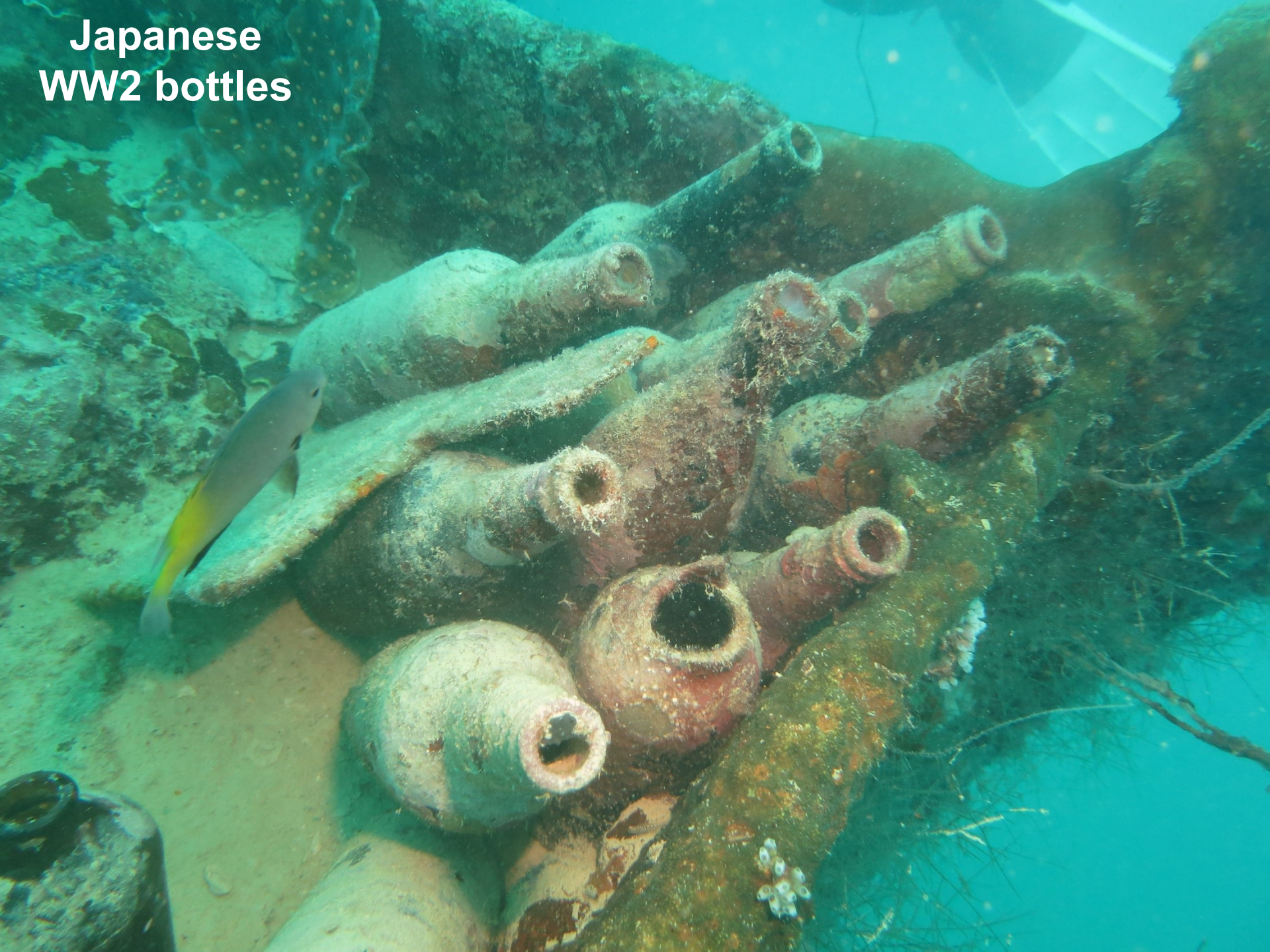
Jake Float Plane Cockpit



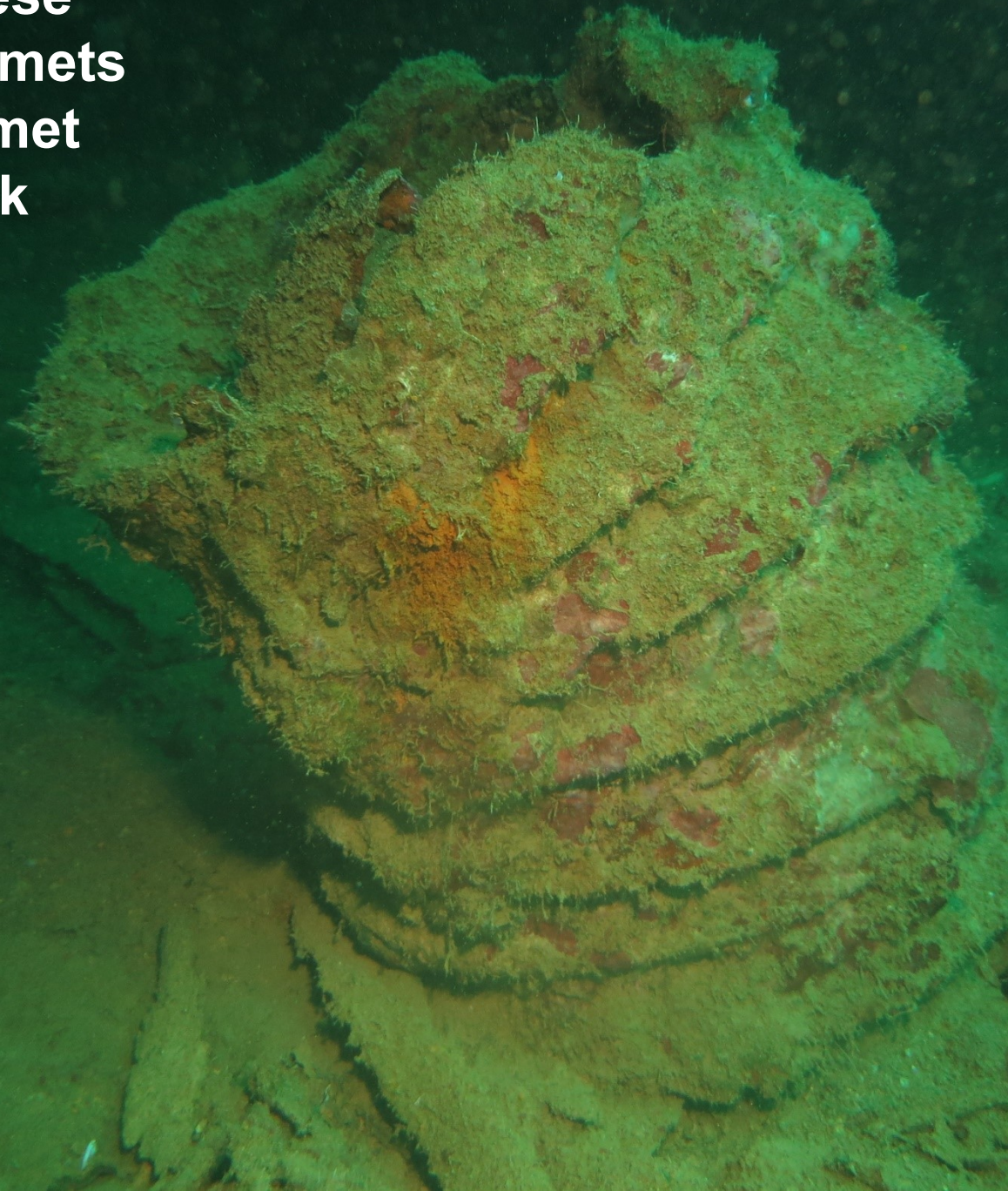


Relics- bottles, gas mask cannister, lantern

**Japanese
WW2 bottles**



**Japanese
WW2 helmets
on Helmet
Wreck**



Mitsubishi A6M Japanese Zero Fighter



One pilot, 1100hp, 350mph, 38k',
1200 nm, 2x20 mm, 2x7.7 mm
guns, bombs, 10499 ea

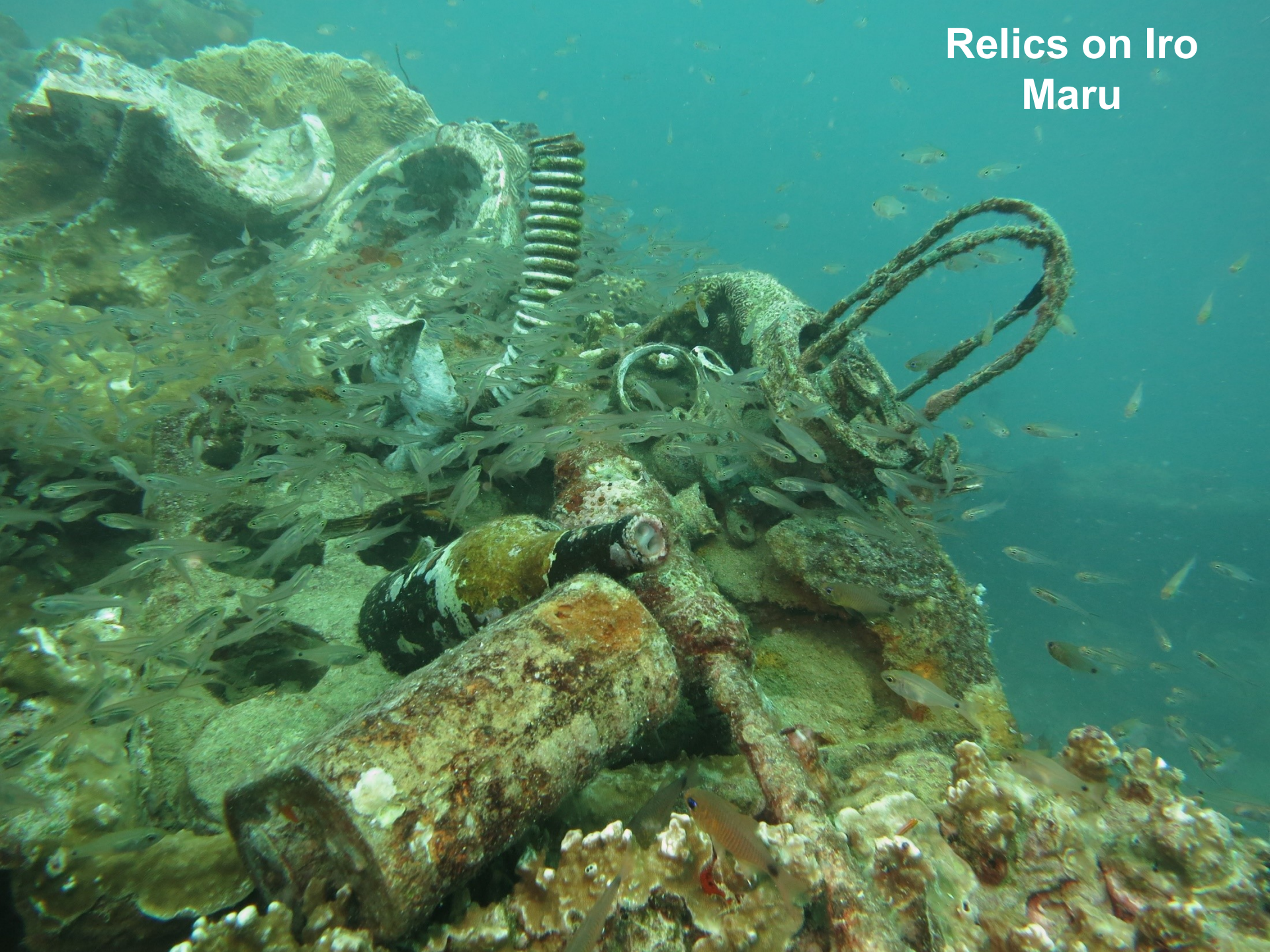


**Japanese A6M
Zero fighter on
SE reef**



**Japanese A6M
Zero fighter in
Koror harbor**

Relics on Iro Maru



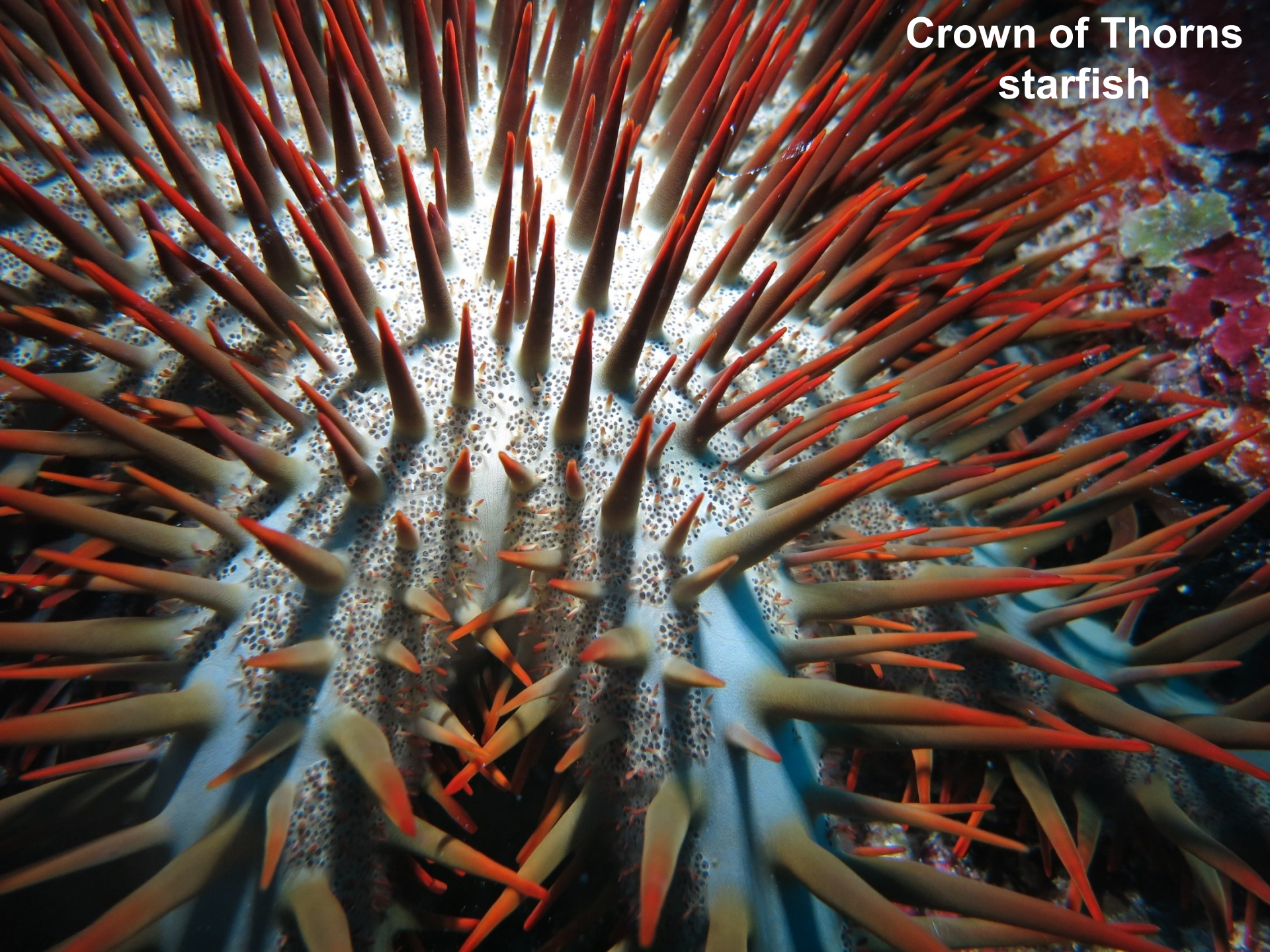


Lantern and other
relics on Iro Maru

**75mm gun barrel
on Iro Maru**



Crown of Thorns
starfish



Ulong Channel Drift Dive



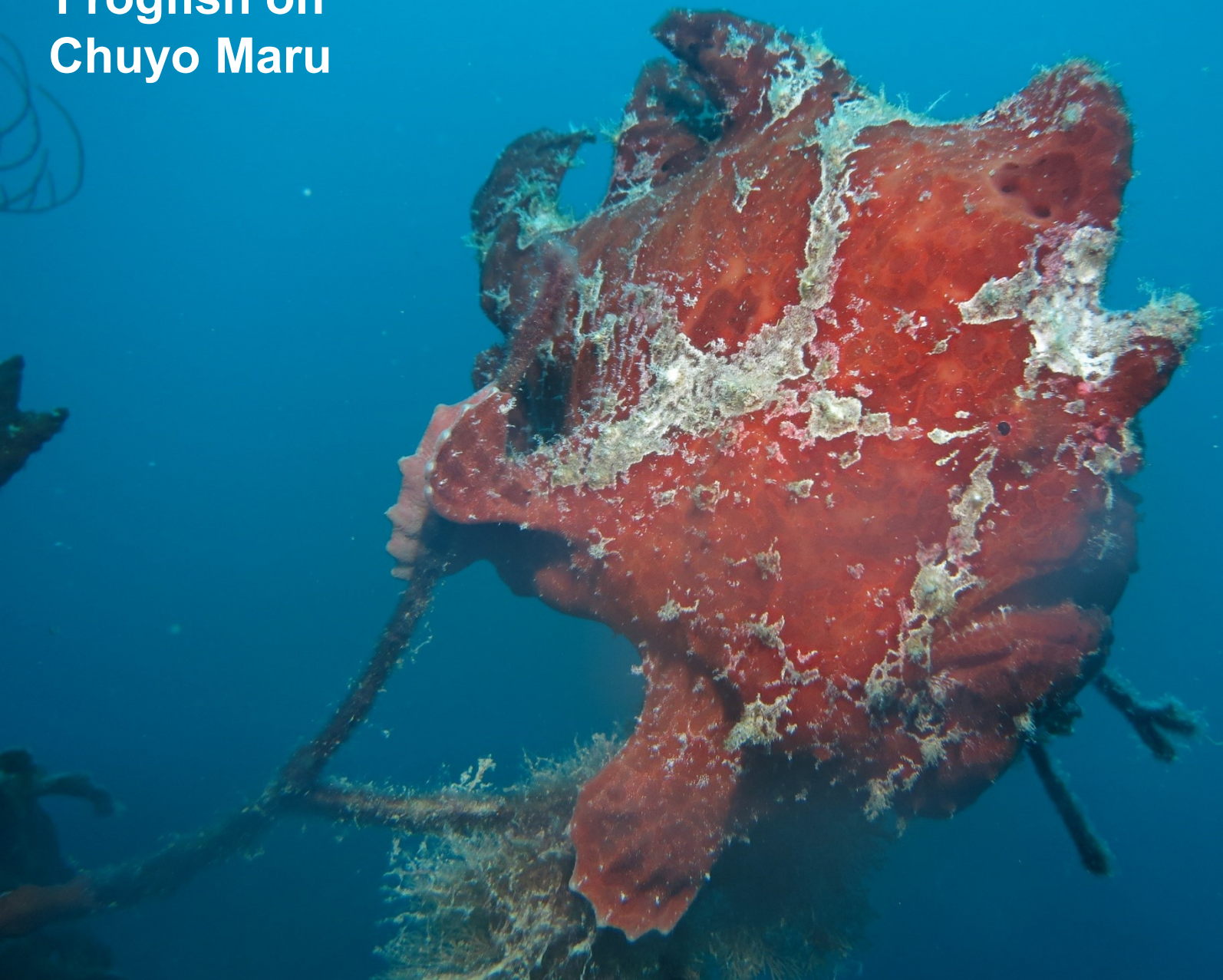
Ulong Channel Grouper Spawning

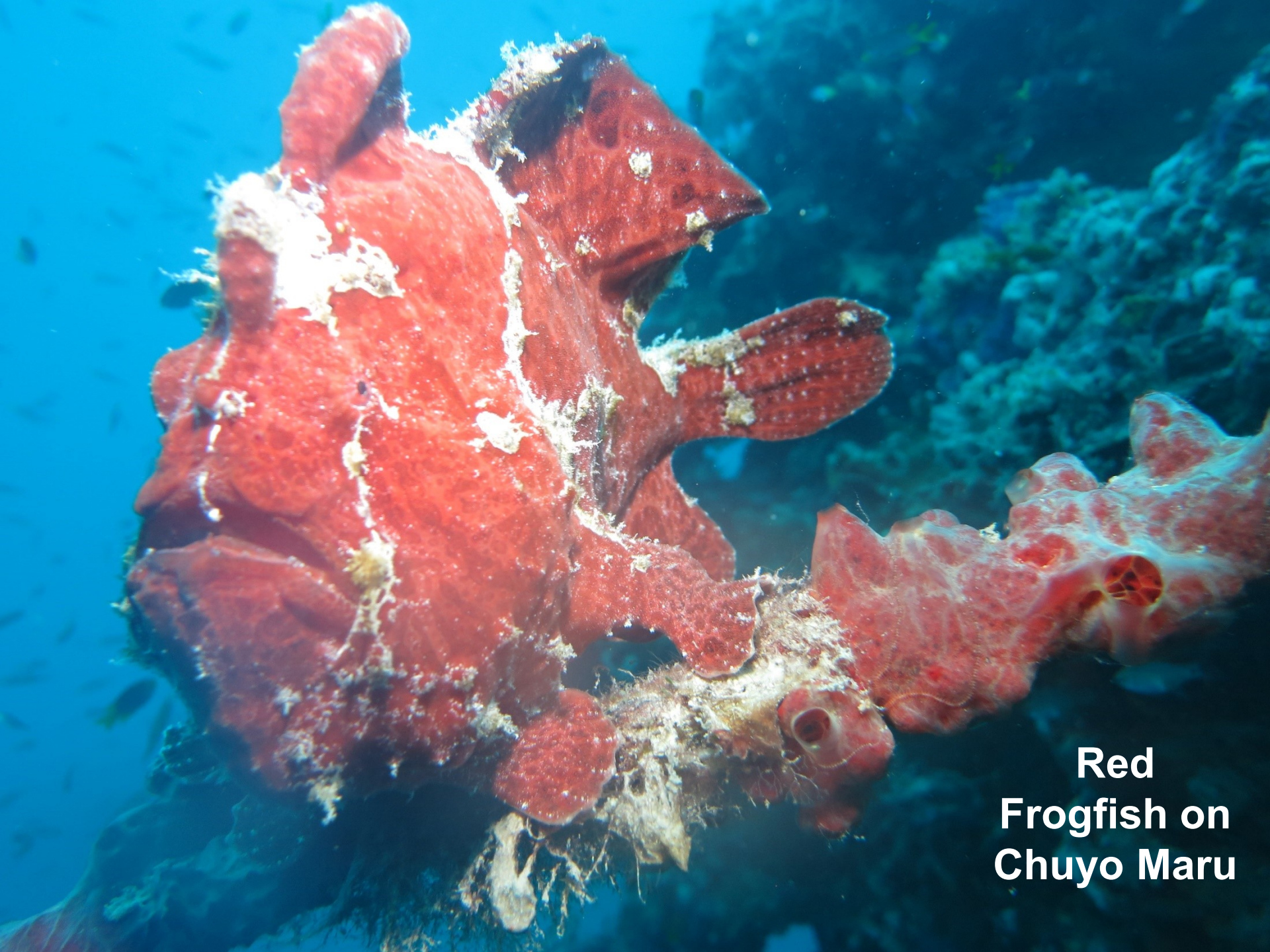


A first-person perspective shot from a scuba diver looking up at a massive, dense school of barracuda swimming in clear blue water. The diver's head, shoulders, and a large silver scuba tank are visible in the lower foreground. The barracuda are silvery and elongated, moving in a coordinated pattern. The water is a deep, clear blue, and the overall scene is awe-inspiring due to the sheer number of fish.

**Huge Barracuda
school**

**Red
Frogfish on
Chuyo Maru**





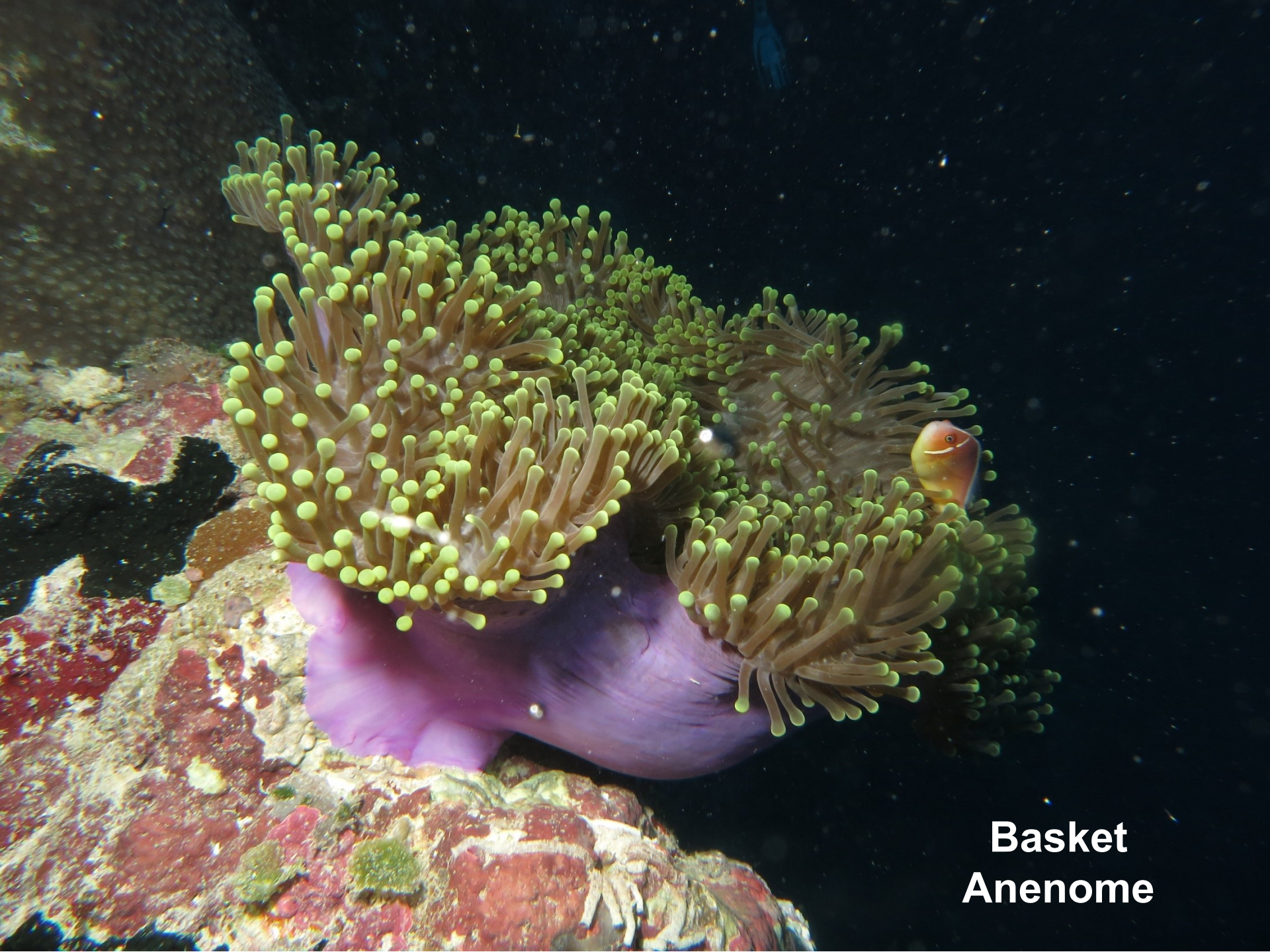
**Red
Frogfish on
Chuyo Maru**



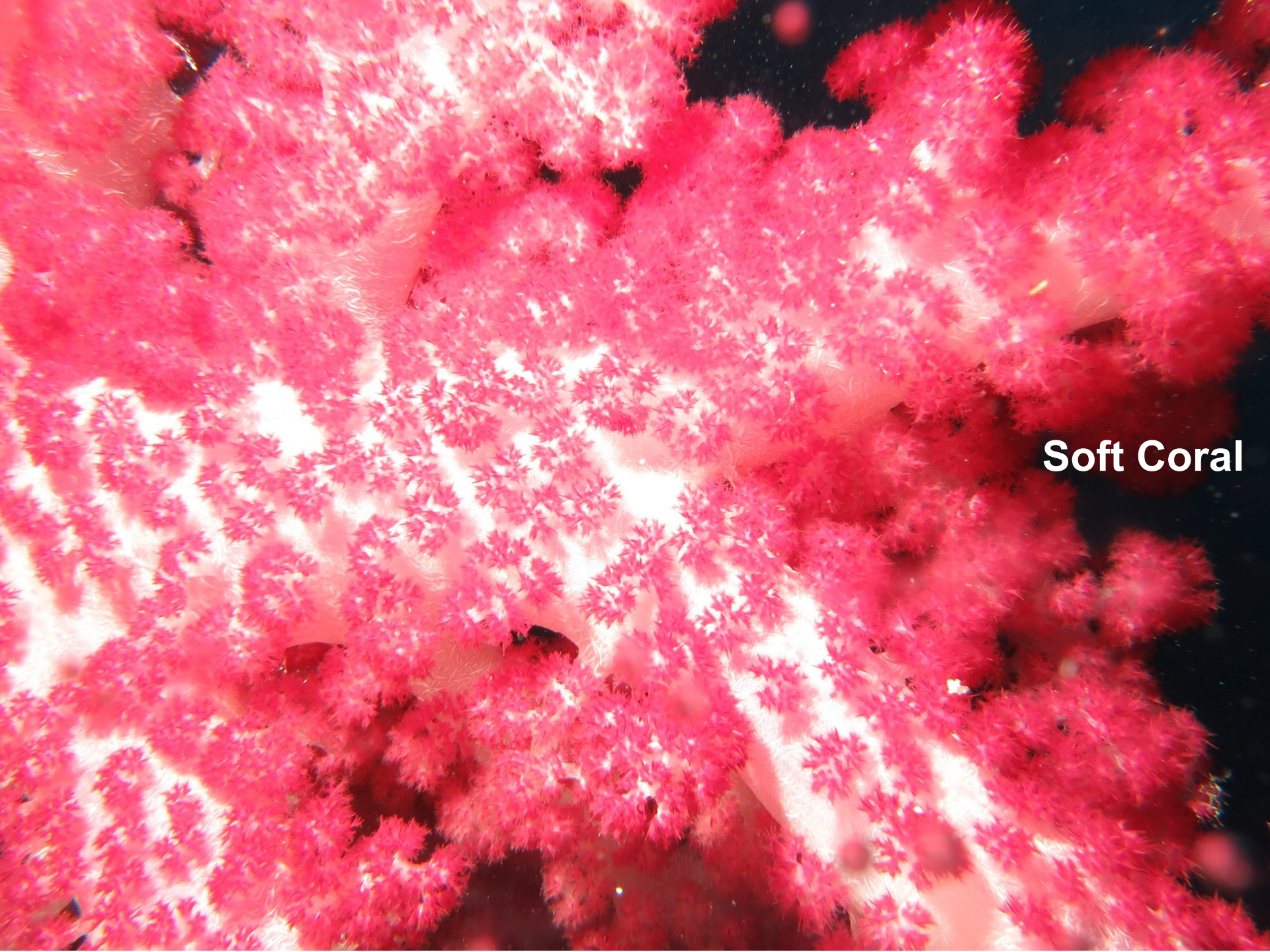
Soft Coral



**Sherry &
Schoolmasters**



**Basket
Anemone**



Soft Coral

Yellow Frogfish



Yellow Frogfish





**Huge school
of Jacks**

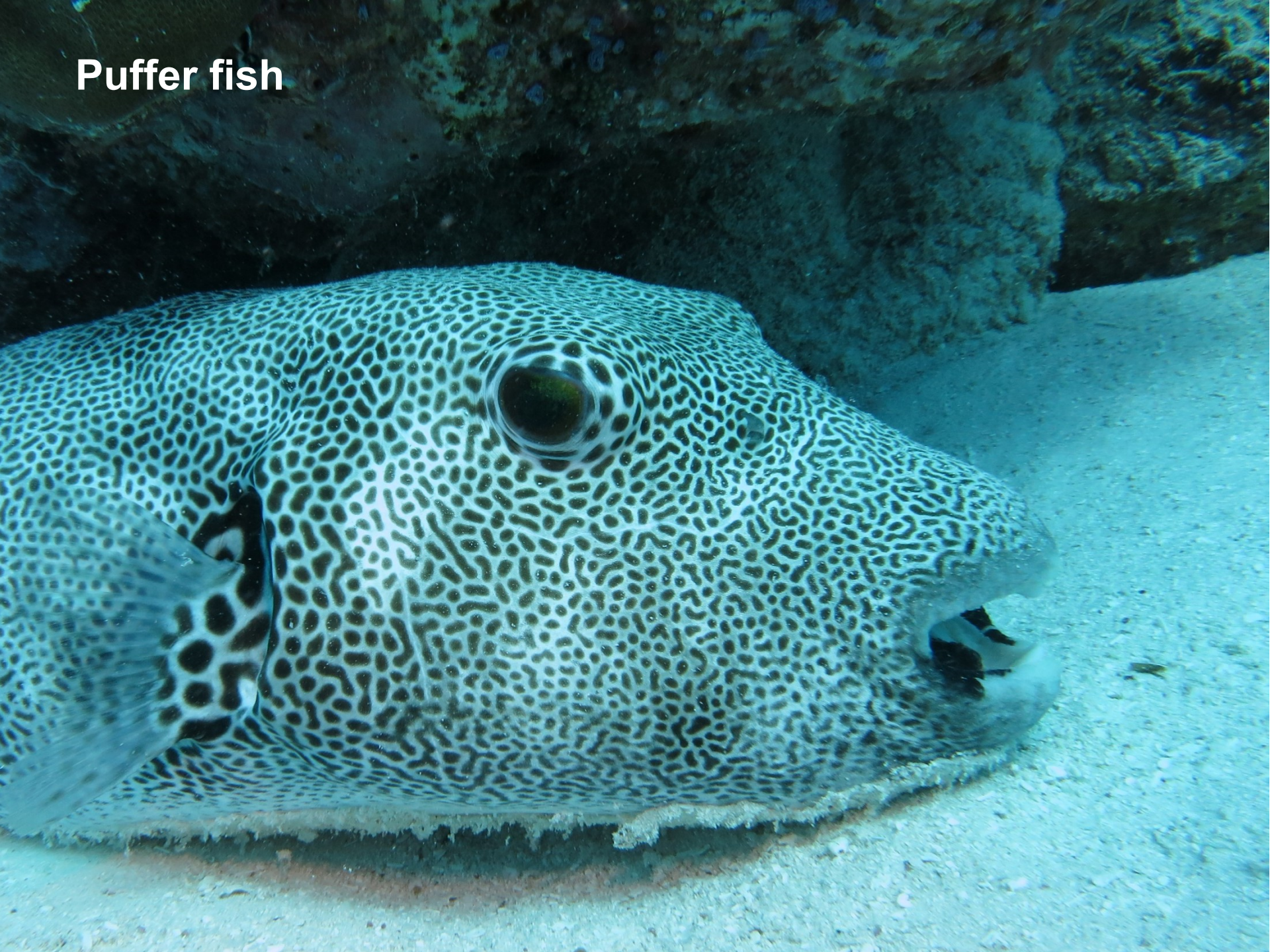


**Diver watching
Jack tornado**



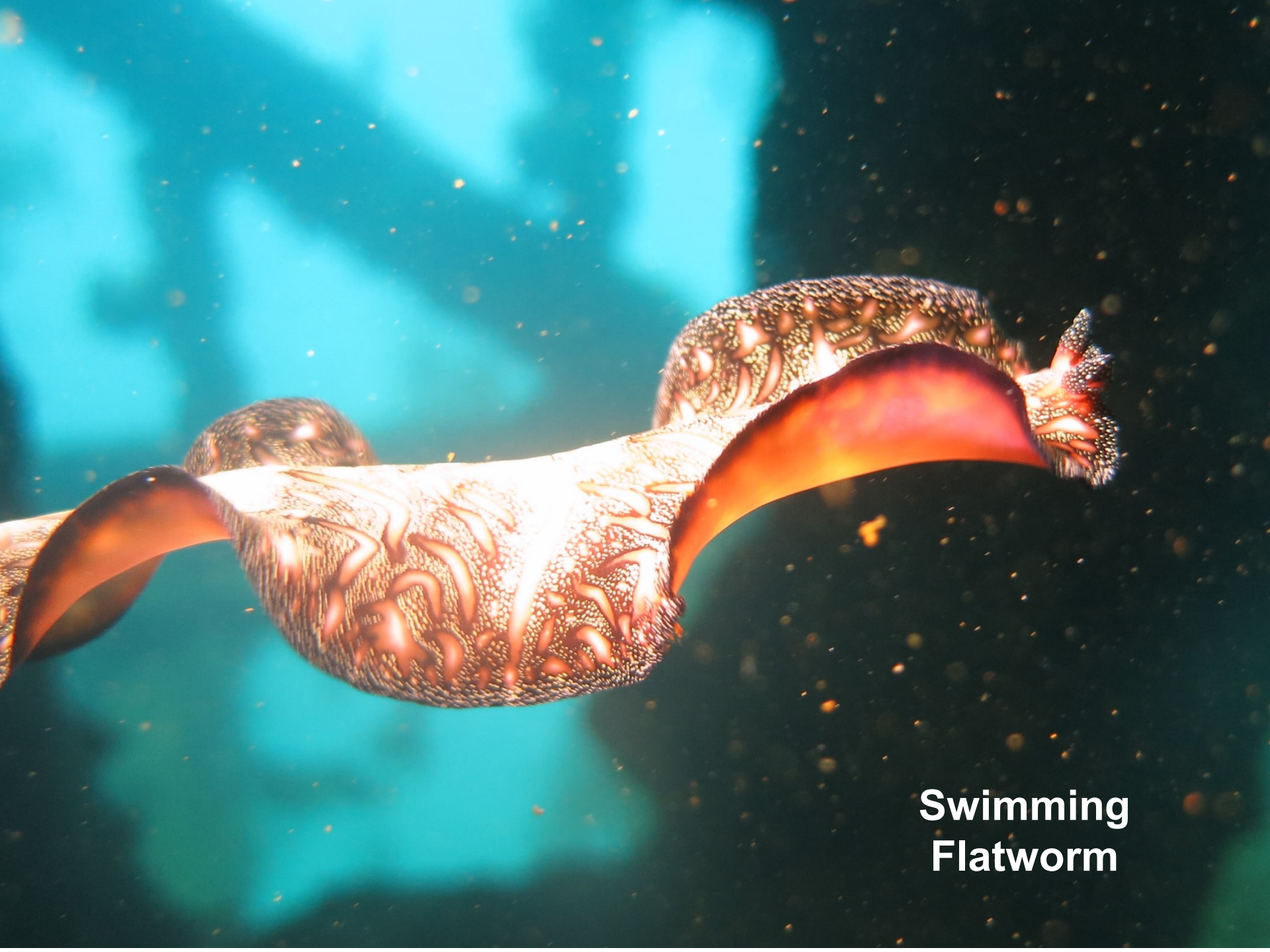
Nudibranch

Puffer fish



Green Turtle





**Swimming
Flatworm**

**Yellow
Nudibranch**



Grey Nudibranch





??????

Spotted Eagle Ray



**Feather Star
Crinoid**



Lion Fish





**Vertical wall
diving in clear
water**

**Palau
Caves- Blue
Hole**



**Saies
Tunnels
Cave Dive**



Spectacular cave overhangs on outer reefs





**Cave entrance at
Blue Corner Wall**



**Sherry entering the
Temple of Doom**



**Shark
Watching-
Hooked In**



**Grey Reef
Shark**



**Mantis
Shrimp**



Nudibranch

Sherry &
Pink Soft
Coral

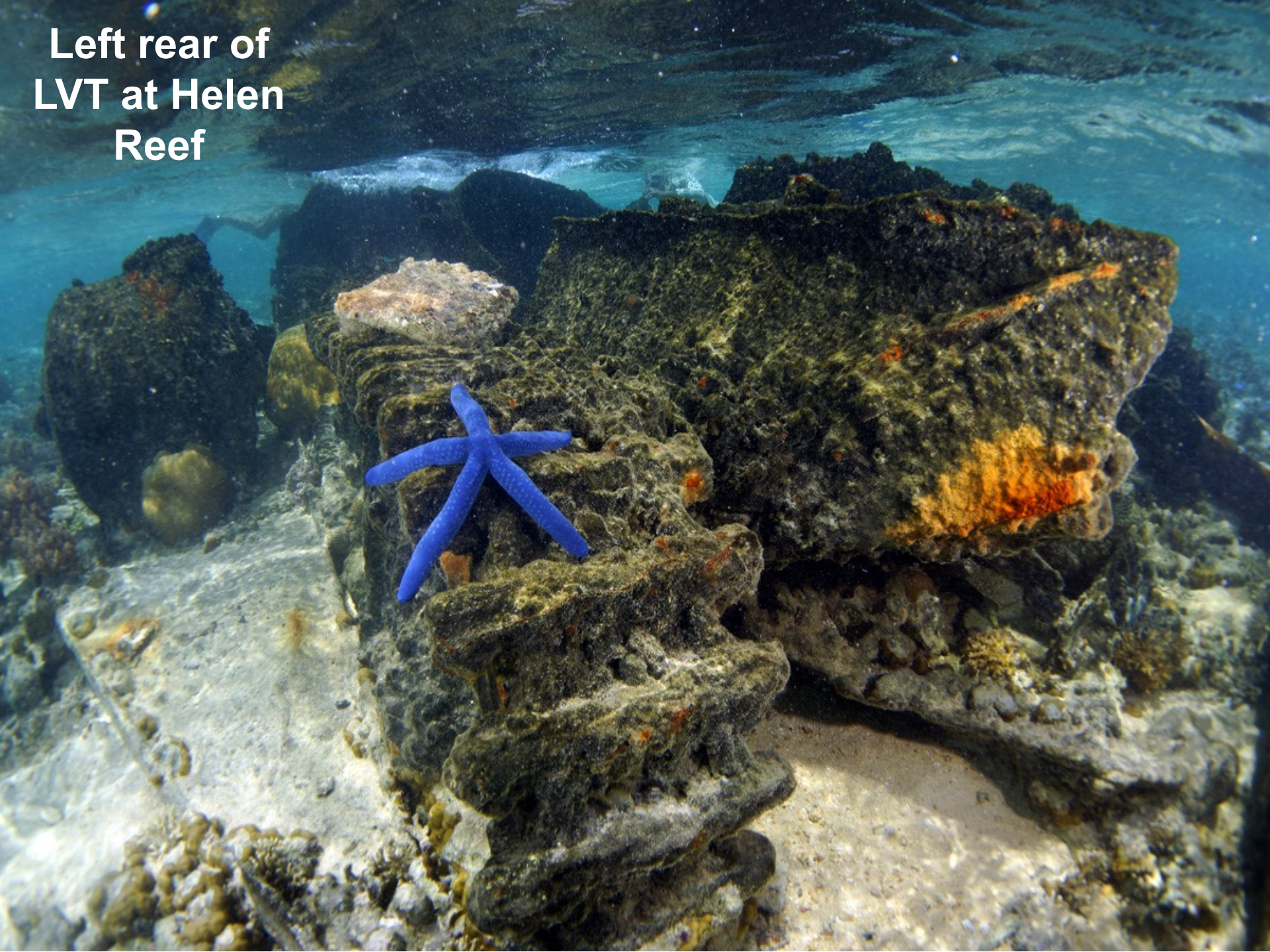




**Goldeneye
Morey Eel**

Moray

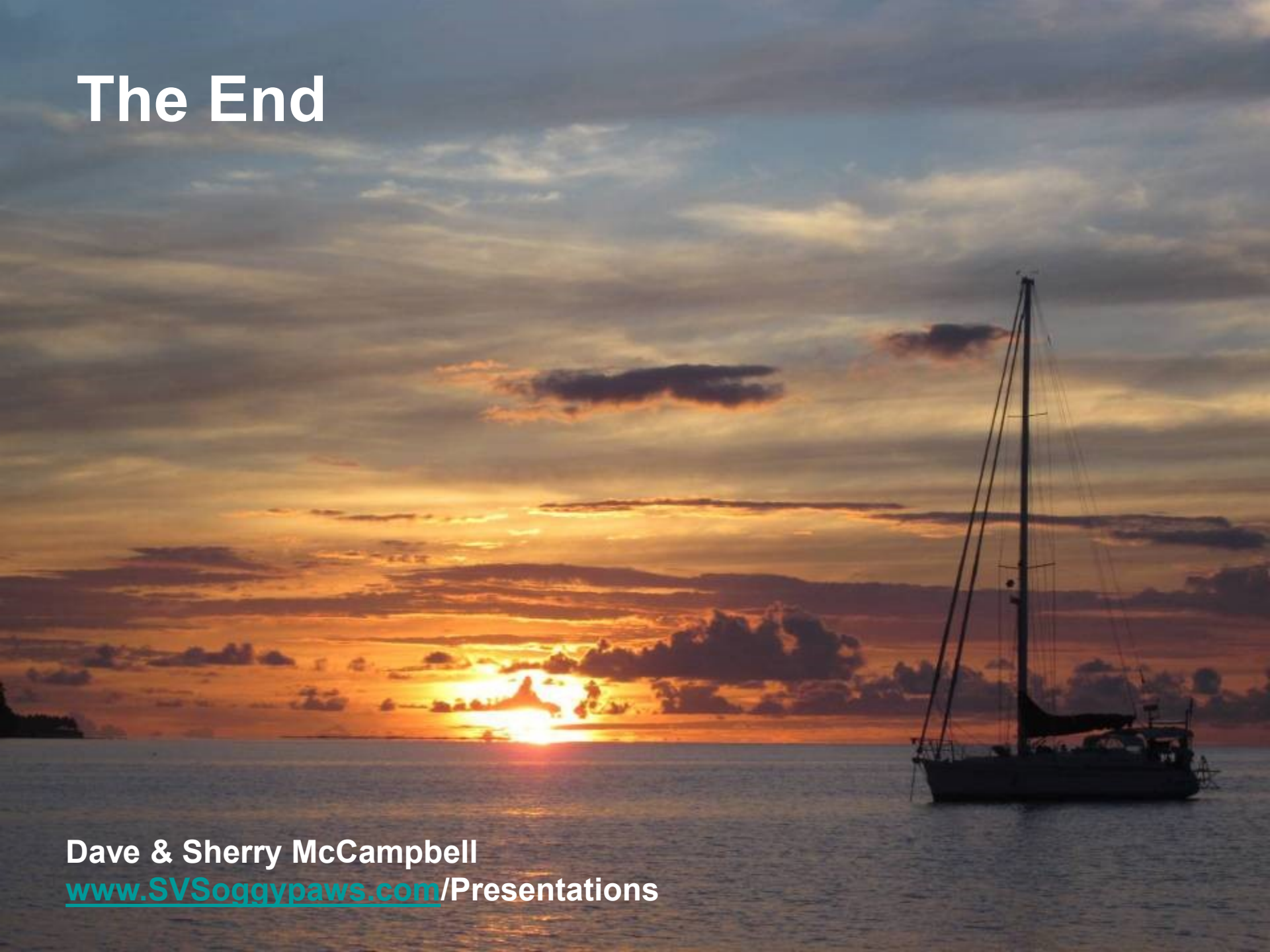
Left rear of
LVT at Helen
Reef



LVT A 37mm
Gun Turret at
Helen Reef



The End



Dave & Sherry McCampbell

www.SVSoggypaws.com/Presentations