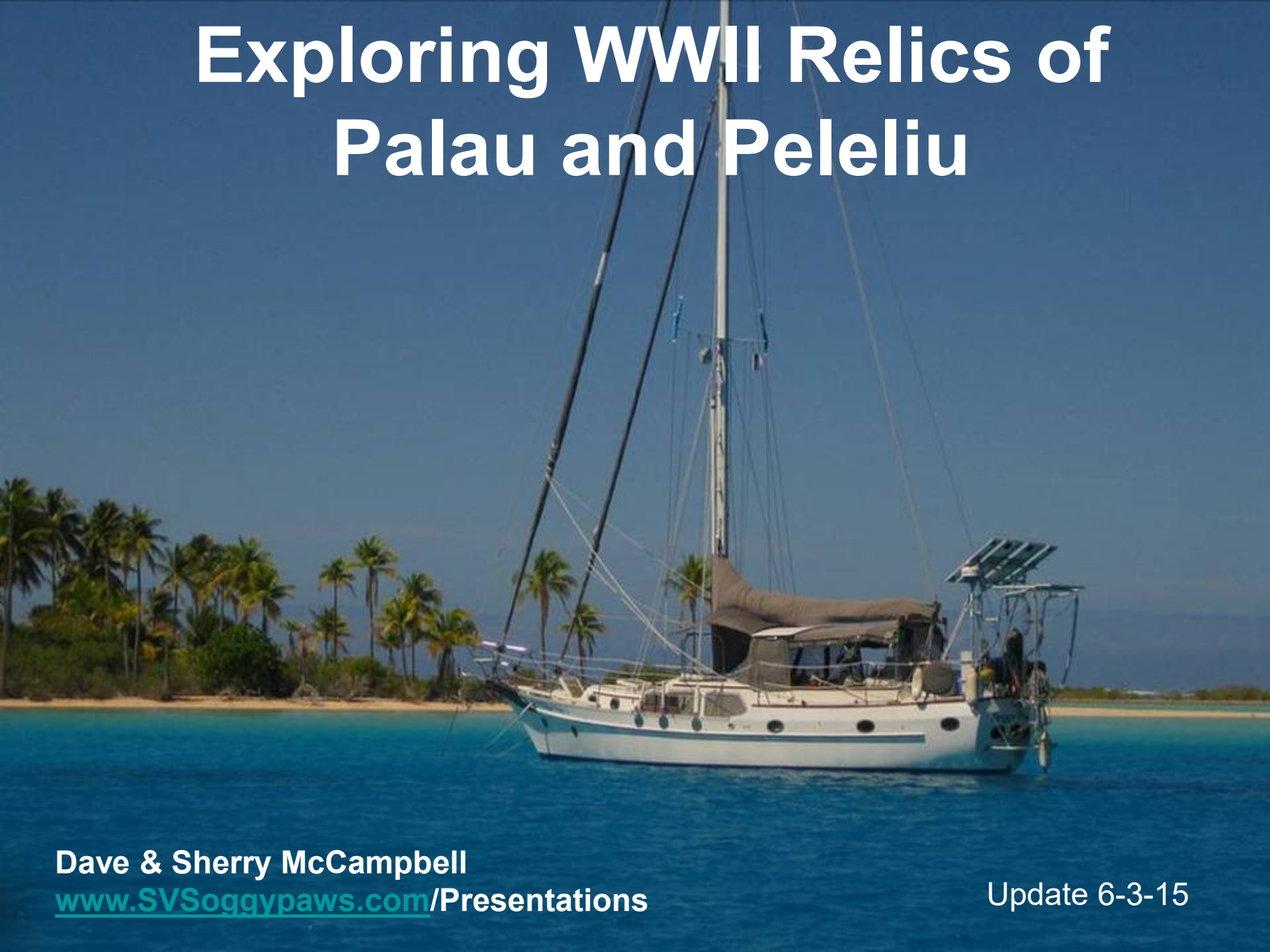


To Find Out

- Slide 31 - surrender of some survivors in Nov 44 or of LT Yamaguchi's 31 in Apr 1947?
- Slide 86 - food and/or ammo cans?
- Slides 88-90 - carriers of what?
- Slide 79 - 6"/150mm rounds?
- Slide 94 - valley ID?
- Slide 115 - unknown clipboard piece?
- Slide 124 – F4U or F6F cockpit canopy?

Exploring WWII Relics of Palau and Peleliu



Dave & Sherry McCampbell
www.SVSoggypaws.com/Presentations

Update 6-3-15

Introduction

- **Started w/ slow cruising circumnavigation.**
- **Fathers both career Naval aviators.**
- **Interest in Scuba diving, shipwrecks and aviation.**
- **More remote N rather than S Pacific route to PI.**
- **Start of Tom's book coincided w/ start of our trip N**
- **Our arrival in Majuro, RMI same date, 10 May, as Dave's Dad's arrival in Majuro 69 years earlier.**
- **Got better and better as we went along.**
- **Total of almost 2 years exploring S Micronesia, RMI, FSM to Palau.**

- Pics of Sams & dive boats & harbor
- Pics u/w-Jake, Iro, Zero
- Rock island pics
- German light house

A6M Zero
engine



**Sherry sez: where are we
and what the heck is this?**

SV Soggy Paws Florida to the Philippines

PACIFIC OCEAN

ASIA

NORTH AMERICA

2007

Philippines

F.S.M.

Palau 2014

Marshall Islands 2013

Tarawa

Samoas

Fiji 2012

Tonga

Hawai'i 2011

2011

French Polynesia

Pitcairn Islands

2008-09 Galapagos

2010

Easter Island

SOUTH AMERICA

AUSTRALIA



~30,000 nm



Soggy Paws Trip Through Southern Micronesia, RMI to Palau, Jan-May 2014



Short Palau/Peleliu History

- 2500 BC- populated by Philippine migrants
- 1522- Magellan first European to sight Palau
- 16-1800s- Spanish influence in East Indies
- 1899-1914- bought from Spain by Germany
- 1914-1944- Japanese 'mandated' occupation
- 1941-1944- Koror headquarters, Peleliu airbase
- 1944 Sep- Nov- US landing/battle for Peleliu
- 1947-1981- US Trust Territories of Pacific
- 1981- Republic of Palau independence
- 1994- Compact of Free Association with US

Battle for Peleliu 15 Sep-27 Nov 44



Major Japanese headquarters/air base after Truk bombed Feb 44

Republic of Palau



**Peleliu
Air Base**



**Koror IJN
Headquarters**

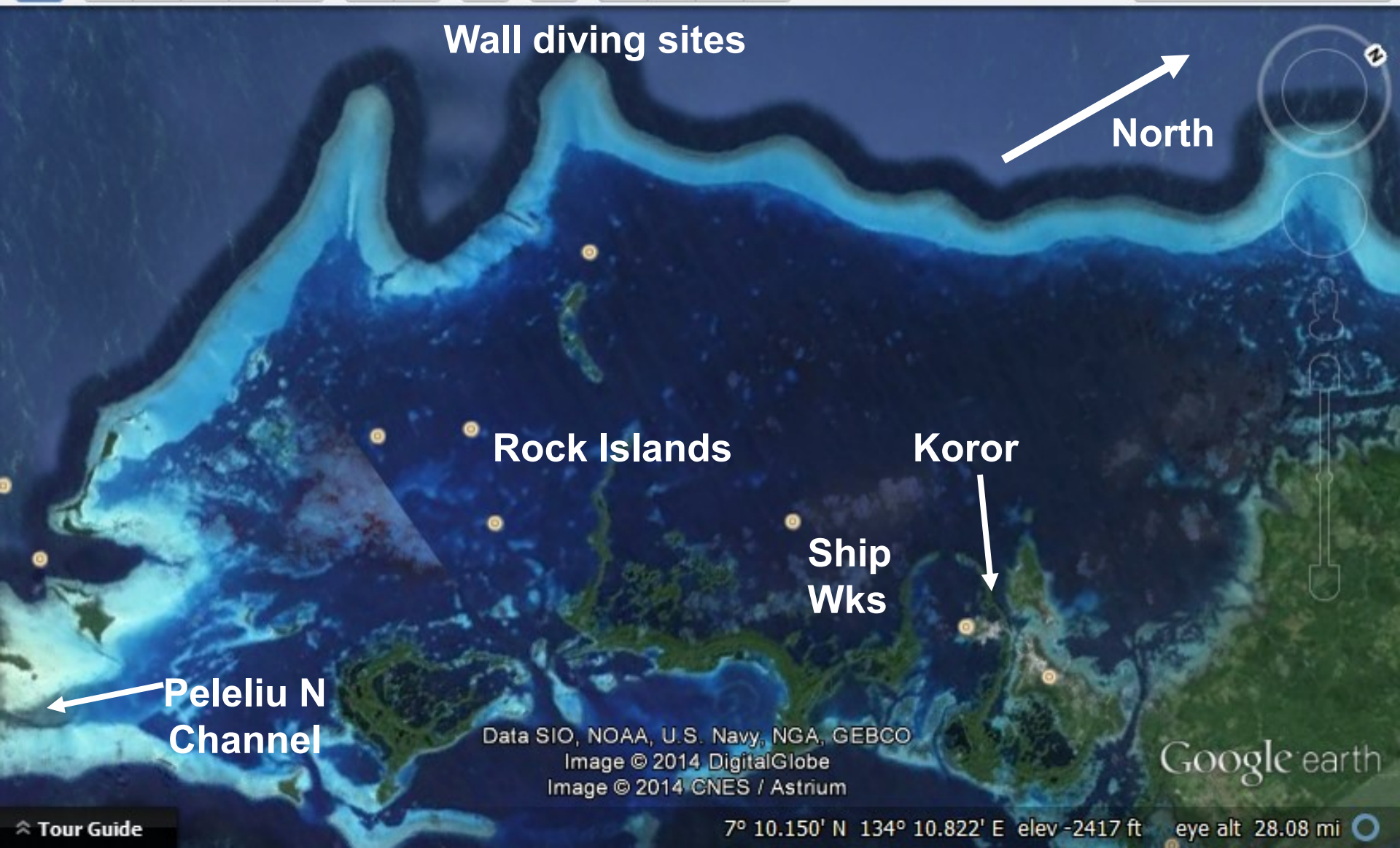
Image Landsat
Data SIO, NOAA, U.S. Navy, NGA, GEBCO



North

Google earth

South Palau & Rock Islands



Wall diving sites

North

Rock Islands

Koror

Ship
Wks

Peleliu N
Channel

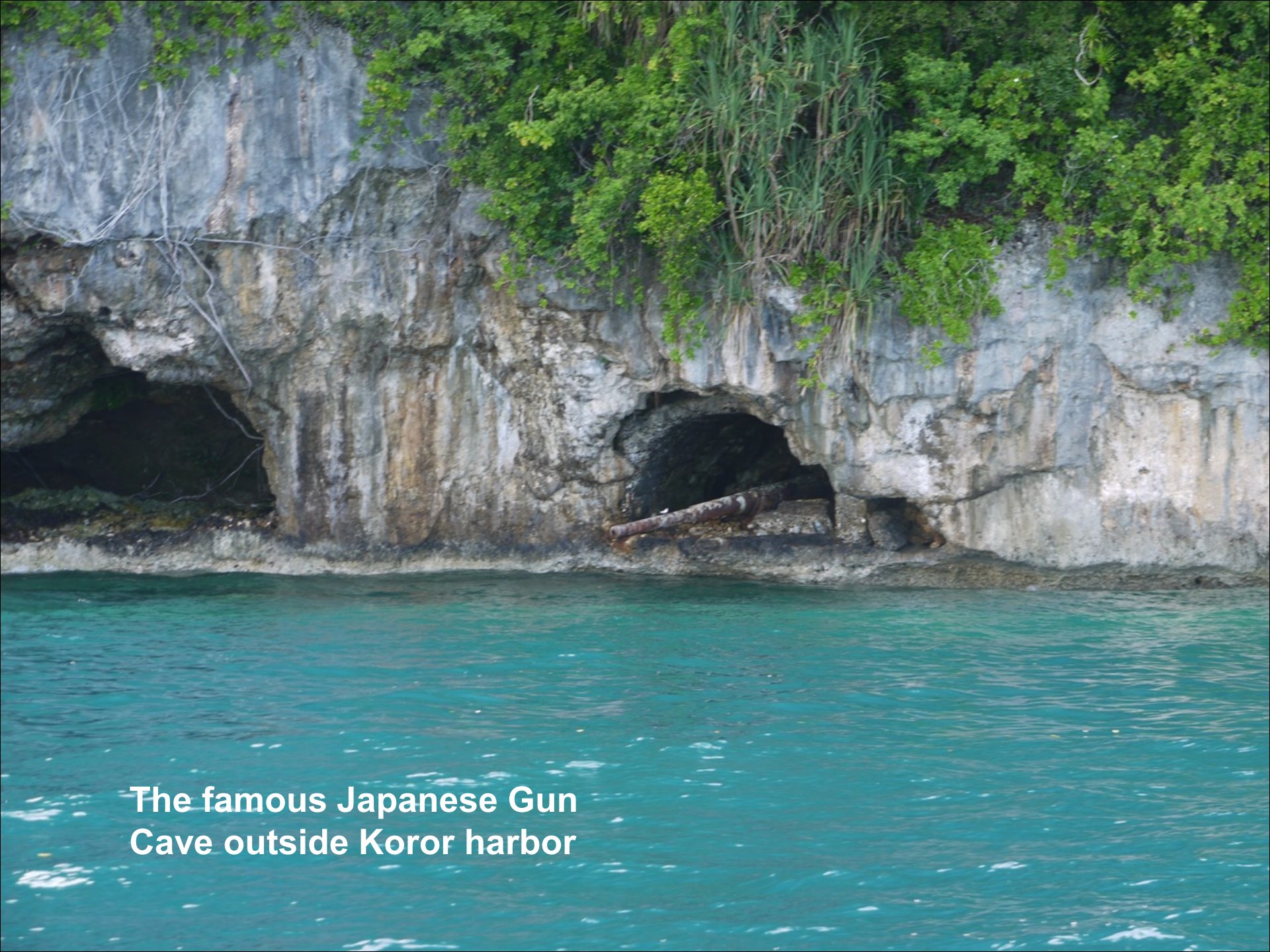
Data SIO, NOAA, U.S. Navy, NGA, GEBCO
Image © 2014 DigitalGlobe
Image © 2014 CNES / Astrium

Google earth

Tour Guide

7° 10.150' N 134° 10.822' E elev -2417 ft eye alt 28.08 mi





**The famous Japanese Gun
Cave outside Koror harbor**



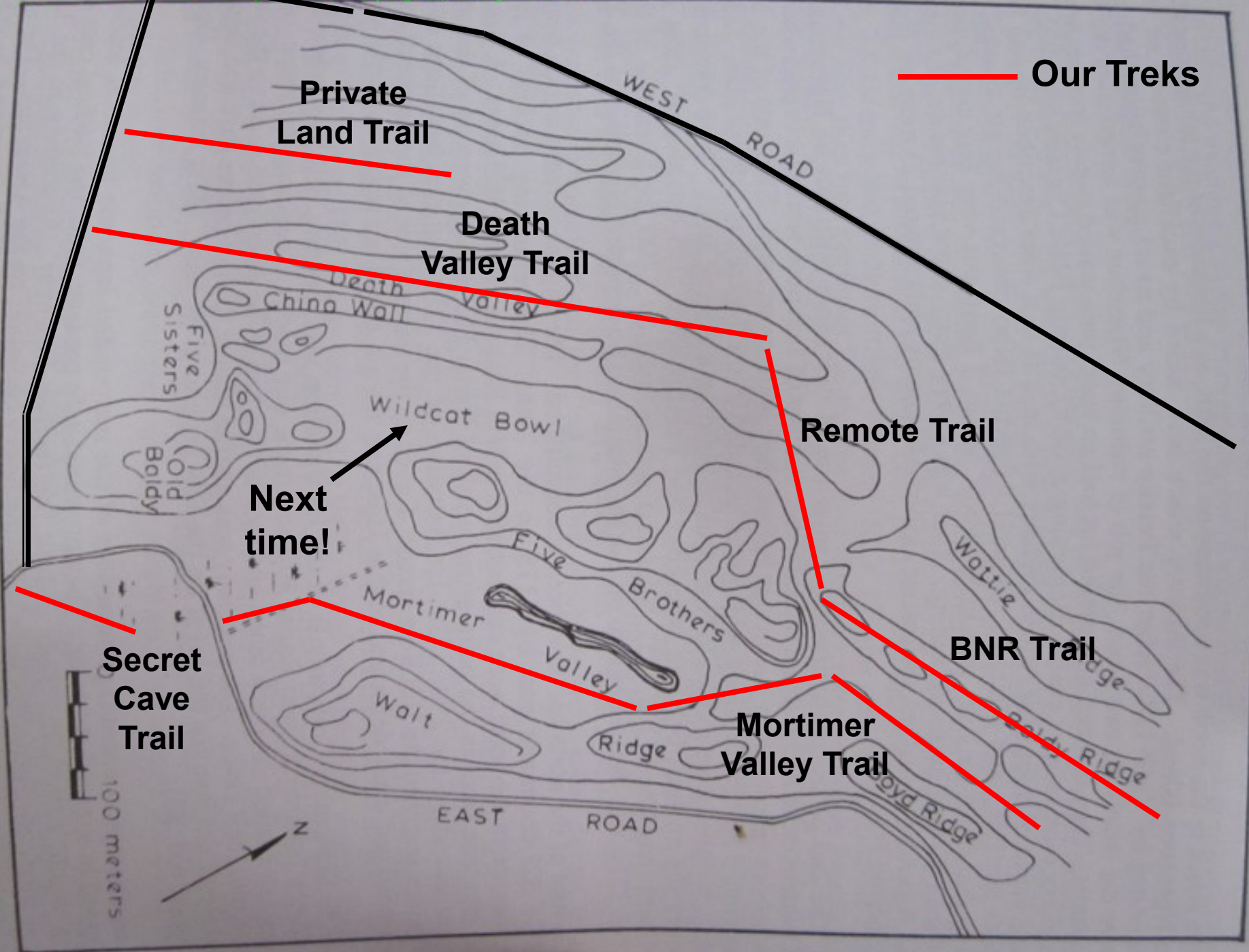
**Massive
Japanese
150mm Shore
Gun on trail to
German
Lighthouse**

Peleliu



Image NASA
Image © 2014 DigitalGlobe

Hard, but great fun, to ID relics if only partly there



Our Treks

Private Land Trail

Death Valley Trail

Remote Trail

Next time!

Secret Cave Trail

BNR Trail

Mortimer Valley Trail

100 meters

N

(14) JAPANESE FUEL STORAGE BUNKER: Concrete walls 80 cm thick, roof 1 meter thick, used by Senbetsu as office and barracks, later used by 4th Marine Air Wing Squadron as a movie theater.

(15) AMERICAN GARRISON AREA: tent encampment, clothes line poles, coral flagpole platform.

(16) AMERICAN QUONSET HUT MAGAZINES: ammunition magazines with steel doors and air vents in the roof.

(17) JAPANESE STORAGE CAVE: Protected by heavy steel doors, debris includes 8 caskets for 75mm ammunition, 3-wheeled trailers, one flatbed trailer.

(18) JAPANESE 200MM ANTI-BOAT GUN: Good condition and in original position in a mine firing eastward, protected by a machine gun pillbox, AMERICAN LVT (A)1 - equipped with light tank turret containing 37mm gun and a 30 caliber machine gun.

(19) JAPANESE BOMB-PROOF POWER PLANT: Power plant building with concrete walls 80 cm thick and roof 1 meter thick, steel columns, two concrete pillars, used by Japanese as Main Power Plant. Located at the Office, cooling tank is currently for slinging water, originally with a 37mm gun aimed toward the sea.

(20) JAPANESE HEADQUARTERS: First floor general room, hallway, kitchen, mess room, NCB mess, transmission room, radio room, wireless telegraph room, kitchen, bath, latrine, water cistern, concrete perimeter electric rail tower (from which Americans later saw their flag), AMERICAN SHOP AREA: used as American Division command post, two heavy steel huts, six latrines, engine, transmission, transfer cases and axles.

(21) POW CAMP: barbed-wire fence enclosure that held Japanese prisoners.

(1) WHITE BEACH AREA: Japanese pillbox with 75mm gun, gun crew, 75 mm gun, fuel drum emplacement, two flat bed trailers, pillbox with 75mm gun, pillbox with heavily damaged gun, pillbox with 20mm cannon, all white, defective machine, American - fresh axes, heated LVT 4, Hawaiian mallet (mobile refrigeration unit), ground lat Foundation, Officers Club and Mess Foundation, Officers Housing Foundations, tennis courts, dump area.

(2) JAPANESE LIGHT TANK: armed with one 37mm cannon and two machine guns.

(3) ORANGE BEACH: Japanese - 20mm cannon pillbox, Model 94 77mm gun, several rifles, American - steel perimeter gear, setting tool nicknamed "MacArthur's Yacht".

(4) AMERICAN MILITARY CEMETERY: chapel, flagpole, two bronze like stone monuments, remains were removed from the graves in 1947 and transferred in accordance with the desires of next-of-kin.

(5) AMERICAN PONTOON BARGE PROPULSION UNITS AND DUMP

(6) AMERICAN FUEL TANKS

(7) JAPANESE CAVE: concrete site, setting equipment, hand grenades.

(37) KLOUKLUBED VILLAGE: Japanese - 1938 Packard used as staff car, two gun emplacements made of fuel drums, 37 mm pillbox, 20 mm pillbox, platform for 25mm gun, American - bomb loader carriage.

(There are many, many artifacts used today in and around Palauan homes, such as American cooking equipment, stainless steel mess trays, serving utensils, etc. Japanese mess kits are used as lunch boxes; ammunition boxes are used for storing tools; American helmets are used as flower pots; Marston mat serves as benches and fencing. Items such as propellers with no military value are used for decoration.)

Ferry landing motel

WARNING!! - Many island areas of Peleliu are still mined. Please do not venture off the roads to explore the island without a local guide to ensure your safety.

~4 miles

Jungle, caves, relics

(25) FINAL COMBAT ZONE: three caves served as last Japanese command post where General Wabigawa and Maj. Gen. Matsuoka committed suicide.

(33) U.S. NAVY HOSPITAL: Foundations of quonset huts and shower facilities.

(32) AMERICAN BEACH: pits, combat-ration trenches, personal effects, gun emplacement.

(34) JAPANESE MEMORIAL: at the Peleliu civilian cemetery, seven aircraft propellers serve as grave markers.

(35) U.S. REGIMENTAL COMBAT TEAM MONUMENT: in memory of 321st RCT, located near the Protestant Church.

(36) JAPANESE INTER-ISLAND RADIO STATION: fuel storage building, two water cisterns, water cooling tank, 2-story main building used by U.S. as a command post and later converted to bar/ movie theater named "The City".

(38) JAPANESE 1,000-MAN CAVE: 1 cave complex, 10 Japanese died from this cave as late as 1945, a few sick and injured men in the caves until death, several nearby pillboxes.

(39) PHOSPHATE PLANT: economic mainstay of Peleliu before the war, only foundations, loading platform and a dock remain.

(40) JAPANESE CAUSEWAY: Japanese - narrow gauge railroad track to Ngasolina Island, American - rebuilt dock, portico unit, portico barge.

(41) JAPANESE 200MM ANTI-BOAT GUN: Good condition and in original position in a mine firing eastward, protected by a machine gun pillbox, AMERICAN LVT (A)1 - equipped with light tank turret containing 37mm gun and a 30 caliber machine gun.

(42) JAPANESE 120MM GUN: Model 120 dual purpose gun (artillery and coastal defense), serving type in the interior.

(43) SHERMAN TANK: Model M4A4 tank with 75 MM gun, good condition, clean, undamaged, abandoned by coral stone.

(44) JAPANESE 200MM CANNON PILLBOX: in good condition, capable of firing 120 rounds per minute, in good.

(45) AMERICAN LVT 4: located near the runway, three machine gun mounts, nicknamed "Miss Peleliuba".

(46) RADAR HILL: Japanese - steel radar base mounted on stone platform, radar antenna debris, radar van foundation, gun crews; American - barbed-wire emplacement on screw-type pilings.

(47) JAPANESE HOSPITAL CAVE: one of five caves west of the quarry, Y-shaped, 6 meters deep, operating table and surgical devices; NEARBY U.S. BULLDOZER: missing engine, markings "CBMU 49 571".

(48) CENTRAL COMBAT ZONE: jagged, steep coral cliffs, hundreds of caves, few artifacts.

(49) JAPANESE 127MM GUN EMPLOYMENTS: three concrete emplacements that remained empty because the guns had not arrived.

(50) AMERICAN LCM's: Landing Craft, Mechanized.

(51) JAPANESE RADIO DIRECTION FINDER STATION: (used by Americans in Marine command post) administration building, large foundation, water cistern, two power plants, supply room used today as a private residence.

(52) AMERICAN ISLAND COMMAND HEADQUARTERS: two quonset hut foundations, Japanese concrete foundations used for administrative offices and flag-raising area, LVT4 troop and cargo carrier with ramp down, JAPANESE POWER PLANT: 2-story concrete building.

(53) JAPANESE BARRACKS COMPLEX: 8 air raid shelters, foundation for bath and ice-making fireplace, three water cisterns, AMERICAN OCCUPATION REMNANTS: beach bottles, beer cans, stretch wheels.

(54) AMERICAN LVT "one cargo/troop carrying LVT, and one armor-plated LVT" with a 75mm artillery howitzer and a machine gun mounted on top of the turret.

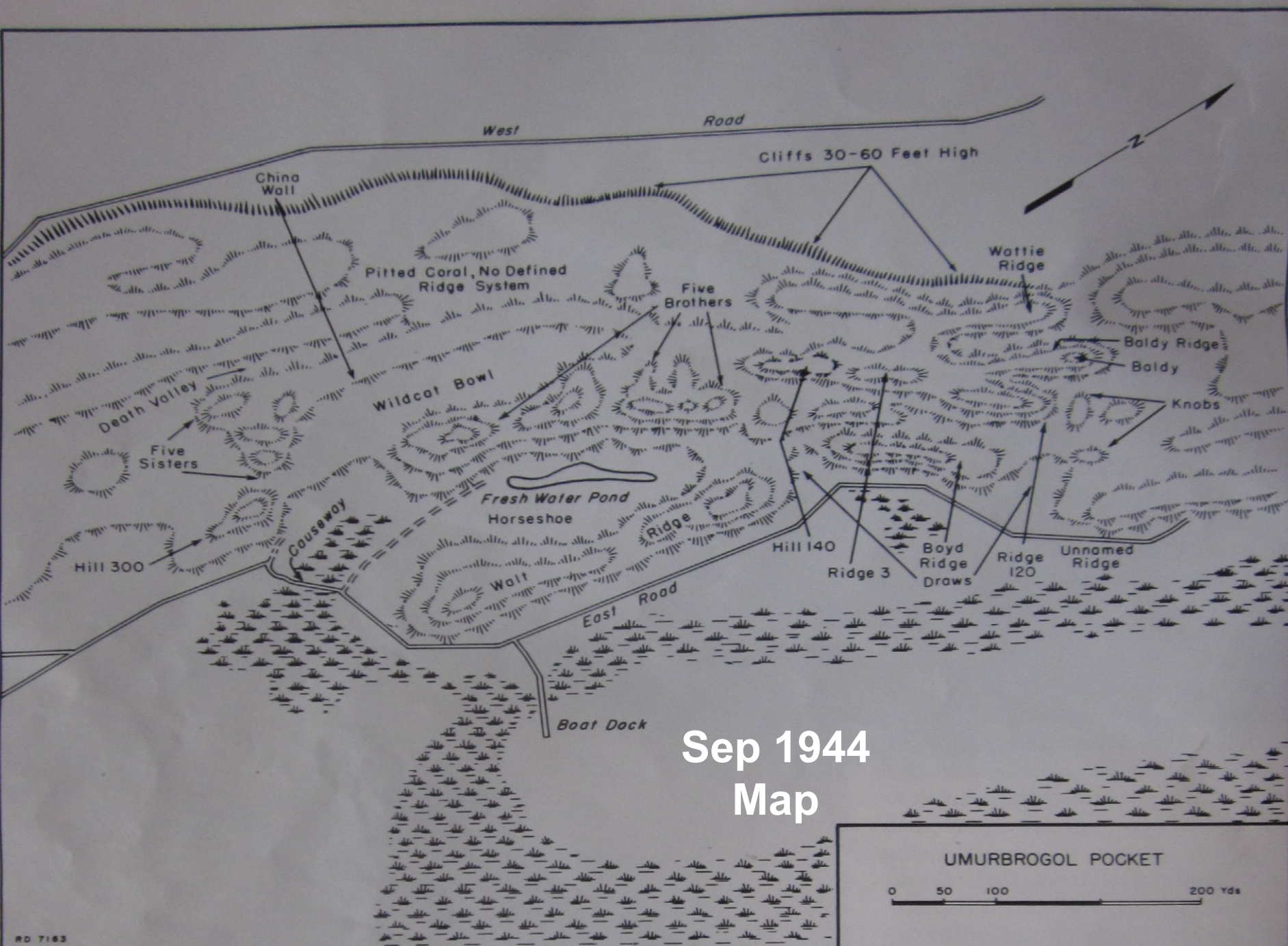
(55) BLOODY NOSE RIDGE MONUMENT: Erected by the 323rd Regiment of the 81st Infantry Division, parking lot decorated with helmets, mess kits and a 25mm Japanese anti-aircraft gun.

(56) JAPANESE AIRBASE ENTRANCE: concrete gun posts, quonset hut foundations, U.S. QUARTERMASTER SUPPLY DEPOT: fuel drum platforms, American bread oven.

Map Adapted from *Peleliu Revisited*, Micronesian Archaeological Society, Wood Number 24, December 1988, prepared by by D. Coln Denfeld.

★ ★ ★ ★ ★
 ★ NOTICE: It is against Palau law to remove any war relics from the island, punishable by a maximum fine of \$15,000.00 and up to one year in jail.
 ★ ★ ★ ★ ★

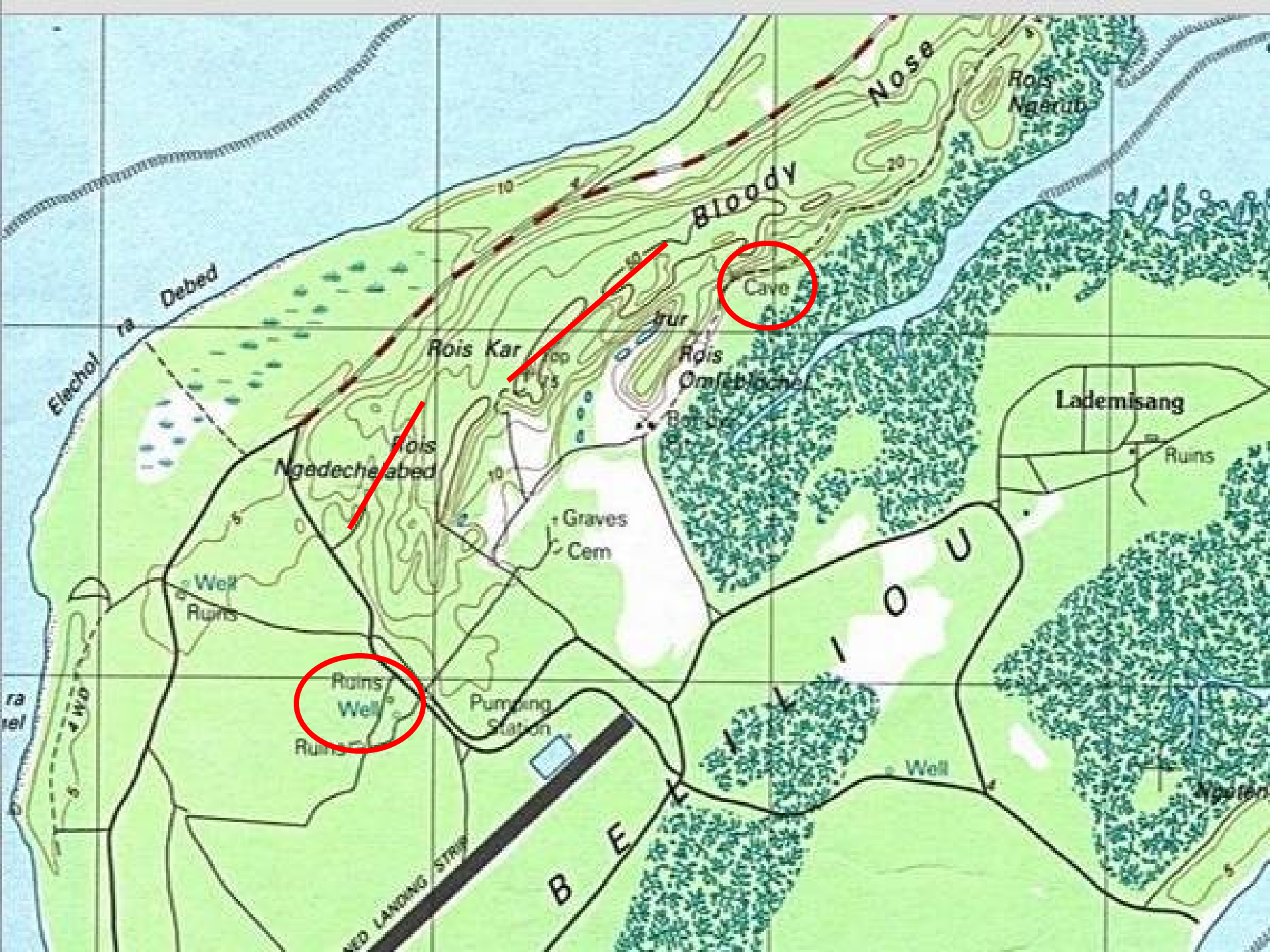
THE BATTLE FOR PELELIU
 SEPTEMBER 15 - NOVEMBER 27, 1944



Sep 1944
Map

UMURBROGOL POCKET

0 50 100 200 Yds



Elechol ra Debed

Nose

Rois Ngerub

BLOODY

Cave

Rois Kar

Irur

Rois Omfblane

Rois Ngedeche abed

Graves Cem

Lademisang

Ruins

Well Ruins

Ruins Well

Pumping Station

U

Well

NEW LAWONG STRAY

B E L

Well

Existing Trails





WELCOME TO PELELIU

ペリリュウへようこそ

PLEASE COME AGAIN

またおこしくたがさい





**North Ferry Dock
Peleliu Ocean
View Motel**



**Intrepid explorers -
Dave, Phillip, Kevin**

First day road tour

State of Peleliu
A U.S. National
Historic Landmark

Bloody Nose Ridge
Monuments →

Museum →

81st U.S. Army
Monument →

Japanese War
Memorial →

1000 Man Hospital Cave entrance



Japanese, flag
shoe sole, broken
bottles inside
1000 Man Cave



Sherry face to face with 500 lb
bomb inside 1000 Man cave





**Japanese beer bottles,
mess kit, plate and shoe
sole inside 1000 Man cave**

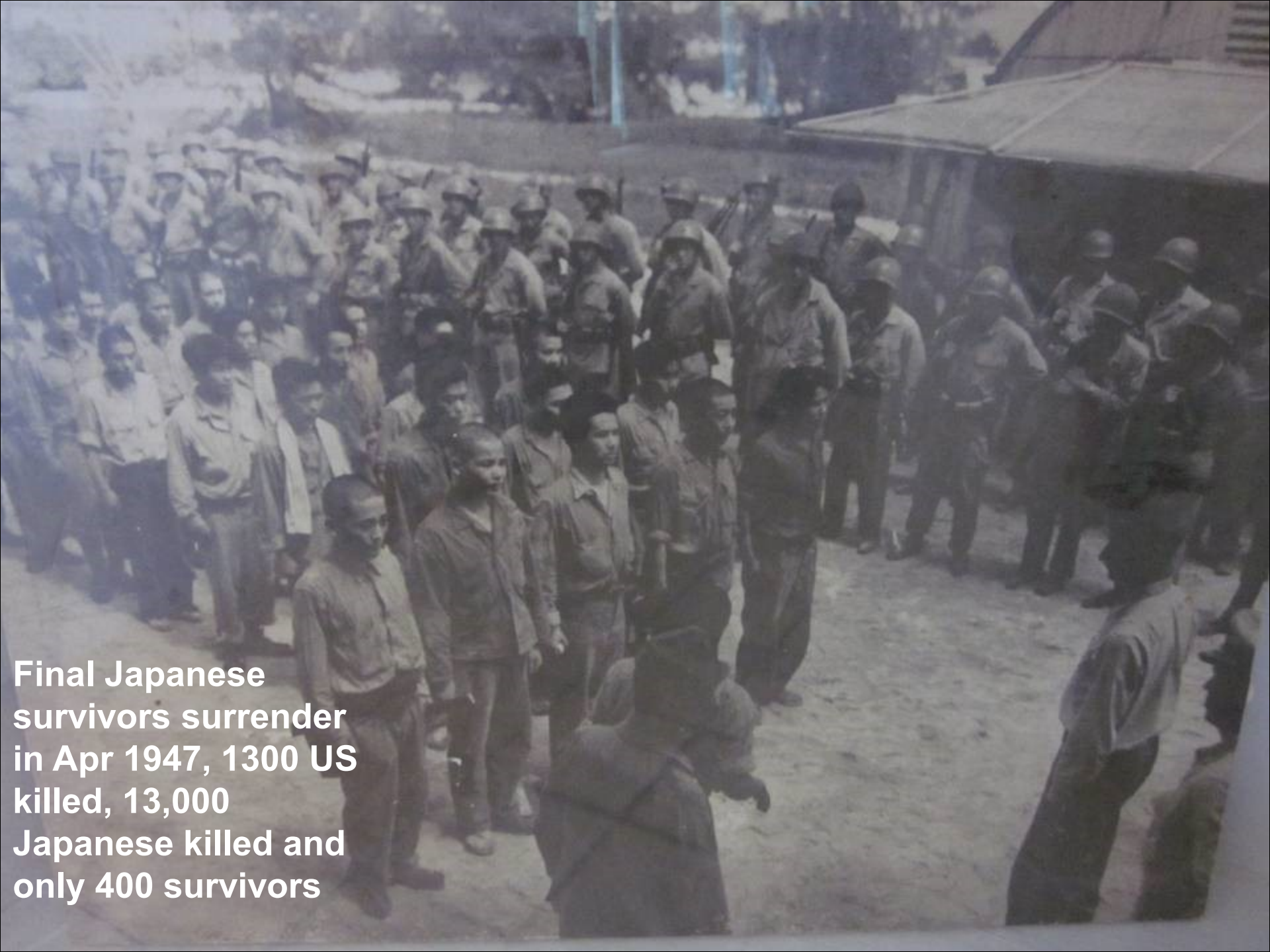
November 1944 during
the Japanese military
but annihilated here
l.

cluding Second Lieute-
chi did not believe that
ded, until at last they
the U.S. Army on the
1947. They consisted of
avy men and 4 civilian

half years, all of them
rilla fighting, hiding
cave.

located on the marsh 30
m here towards the sea.

**Plaque
commemorating
final surrender of
Lt Yamaguchi
and 31 Japanese
on 21 April 1947
after living in
cave for 2-1/2
years beyond
war's end**



**Final Japanese
survivors surrender
in Apr 1947, 1300 US
killed, 13,000
Japanese killed and
only 400 survivors**



**Japanese Air Headquarters
building**



Bomb hole in Air Headquarters building



**Air Headquarters
building bomb
hole, massive
concrete and rebar
construction**



**Bomb proof Power Plant
building nearby**



**Extensive two story
Command and
Headquarters building**



**Command building
from inside a US
Quonset hut**



**Japanese Fuel
Storage bunker, US
Medical Aid Station
after battle in 1944**



**Peleliu Museum
today**



**Famous
WWII
painting of
Peleliu by
Tom Lea

'The
Thousand
Yard Stare'**

**On the landing
beach at Peleliu,
Sep 1944**





**Japanese Long Lance
torpedo at Peleliu
Museum, missing
props & explosives**



**US amphibious LVT, note
US white stars on 37mm
turret and aft end of tank**

**Japanese 3 man Type
95 Ha Go light tank, w/
37 & 7.7 mm guns**





**Japanese Type 95 Ha
Go tank w/ missing
turret & guns**



**US LVTs: one
cargo/troop, one w/ 37
mm & 50 cal guns,
aluminum aircraft fuel
drop tanks**

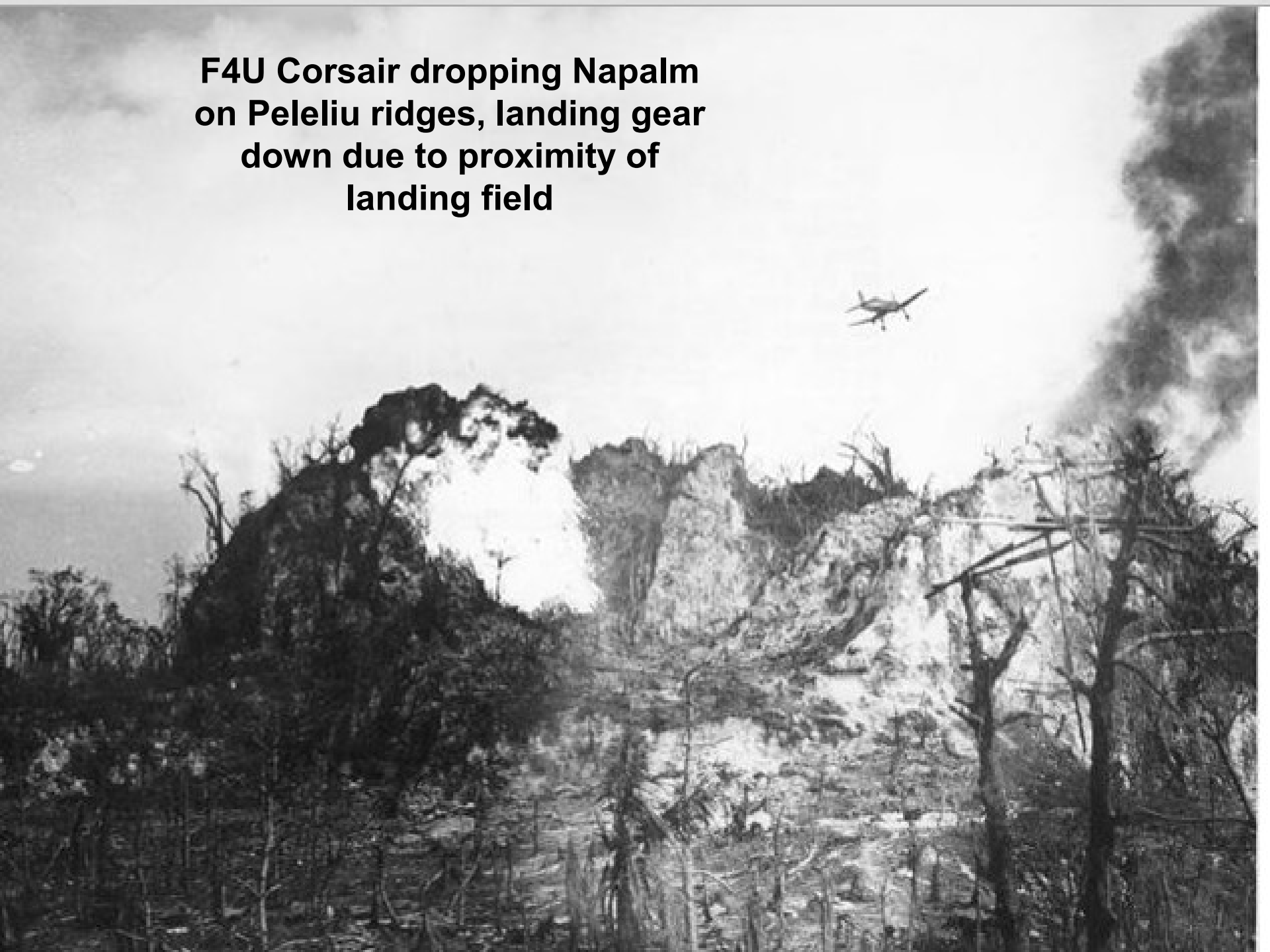


**US Seabee construction
International Harvester G-101
bulldozer, missing engine,
marked 'CBMU 49'**



**Old Japanese airfield,
now infrequent use**

**F4U Corsair dropping Napalm
on Peleliu ridges, landing gear
down due to proximity of
landing field**





**Japanese A6M
Zero wreckage
near South Dock**



**Japanese A6M
Zero wreckage
near South Dock**



**US F4U Corsair
wreckage,
looking aft at
wing root and
fuselage, near
South Dock**

**F6F Hellcat engine cowling
among other plane
wreckage at South Dock**





Cleared Ground bunkers for explosives awaiting detonation



Large 18 cylinder F4U Corsair engines near shore line just north of Ocean View motel



**Japanese D601D4Y Judy
inverted V engine,
upside down, on
Babeldaob Isl, courtesy
armyjunk2, 2007**



**WWII landing beaches,
now deserted**



**Motor launch
wreckage at South
Dock, reputed to be
'MacArthur's Barge'**



**Japanese 200mm
anti boat gun
emplacement in
large cave**

Japanese 200mm
anti boat gun
emplacement in
large cave



**US First
Marine
Division
Monument**



SEMPER FIDELIS



IN MEMORY OF THE MARINES
WHO GAVE THEIR LIVES IN THE SEIZURE
OF PELELIU AND NGESEBUS ISLAND
FROM THE JAPANESE DURING THE
PERIOD 15TH SEPTEMBER THROUGH
15TH OCTOBER 1944



YOUR COMRADES IN ARMS
FIRST MARINE
DIVISION (REINF)
UNITED STATES
MARINE CORPS

**Famous pic of US
Marines advancing
into Wildcat Bowl
on Peleliu Sep 1944**





**Inaccessible and
unexplored Wildcat
Bowl now**

Private Land Trail

US M4
Sherman tank
upset by IED
land mine in
jungle





Sherman
tank
memorial
plaque

IN MEMORY

T/4 OTTO HESSELBARTH
CPL. MICHAEL VALENTINO
PFC. GEORGE LOPES
PFC. HOWARD DAHMS

Men of the 1st Platoon Co. A 710 TK died here 18 Oct. 1944 after hitting a land mine. Having saved two navy airmen, the tank, upon returning to fire into the Jap held caves, was hit.

Capt. H. W. Jones 1st Marine Div. was also killed.

Erected by Veterans of the 710 Tank B N

Dedicated 18 Oct. 1997

**Collection of US and
Japanese canteens
in private quonset**



US aluminum

**Japanese
aluminum**

US steel



US F4U aircraft cockpit canopy and ammo box inside private quonset



**Aircraft parts dump
on private land**



**Tail rudder section from
F4U on private land**



Dave and US F4U wing on private land, note white US insignia



**F4U Corsair parts,
cockpit canopy, ammo
box, wing, courtesy
armyjunk2, 2007**

Bloody Nose Ridge Trail

Trail cleared to 6"
depth inside red &
white stakes





BATTLE OF PELELIU JUNGLE TRAIL

Please stay within the markers, as the area outside has not been cleared of Explosive Remnants of War.

For your safety please walk within the white markers.

- This trail was cleared of Explosive Remnants of War (ERW) in three phases, with funding provided by the New Zealand Government for phase I & II, and AusAID for phase III.
- The trail was cleared by Cleared Ground Demining, a not-for-profit ERW clearance organisation from the United Kingdom, utilising its local team from Peleliu.
- During the clearance of this trail 4,822 items of Explosive Remnants of War, of Japanese and USA origin, were located and removed from this 820 metre (2,665ft) trail from the surface and down to a depth of 150mm (6 inches).



TE AKA AORERE



**CLEARED GROUND
DEMINEING**



**Australian
AID** 



**US M1 helmet, mess kit
and M1 Springfield? rifle
on BNR trail**



**US M1 battle
helmet on BNR
trail, note
bullet hole &
vertical stress
cracking**



**Broken rifle barrel and
trigger on BNR Trail**



A pile of Japanese Model 89 50mm HE knee mortar rounds on BNR Trail, fuses & HE missing



**Kevin & Phillip look
at Japanese Model 89
mortar rounds and 50
cal belt on BNR Trail**



Tail end of a US
60mm M49A2 HE
mortar round on
BNR Trail



**Pile of various mortar rounds, some live?
courtesy 'armyjunk2',
2007**



**US M2 flamethrower
nitrogen pressurizing
gas bottle on BNR Trail**



Collection of US M2 flamethrower gas bottles, pickaxe heads and field phone ringer on BNR trail

Remote Trail

US M1 battle helmet, in
jungle on Remote Trail





**Japanese Type 92
battle helmet found
at remote jungle site**

**US Mk 2 'Pineapple' hand
grenade, beside Remote
Trail, missing safety clip,
pin and lever**



**Stockpile of poss
Japanese ammo
canisters and food
cans? in cave off
Remote Trail**





**Japanese Type 93 anti
personnel land mine in
cave along Remote Trail**

I just saw this photo at <<http://ww2db.com/photo.php?list=sp&sp=dt&dt=19440915>>

It was taken 15th September 1944 on the beach at Peleliu. The Caption was:
"Lieutenant Colonel R. G. Balance of US 1st Marine Division at shore party command post, Peleliu, Palau Islands, Sep 1944. Note triple carriers left center & foreground."

What are these?





**US triple carriers of what?
along Remote Trail**

US triple carriers of
what? outside
Remote Trail cave





**USMC 5 gal fuel
container on
Remote Trail**

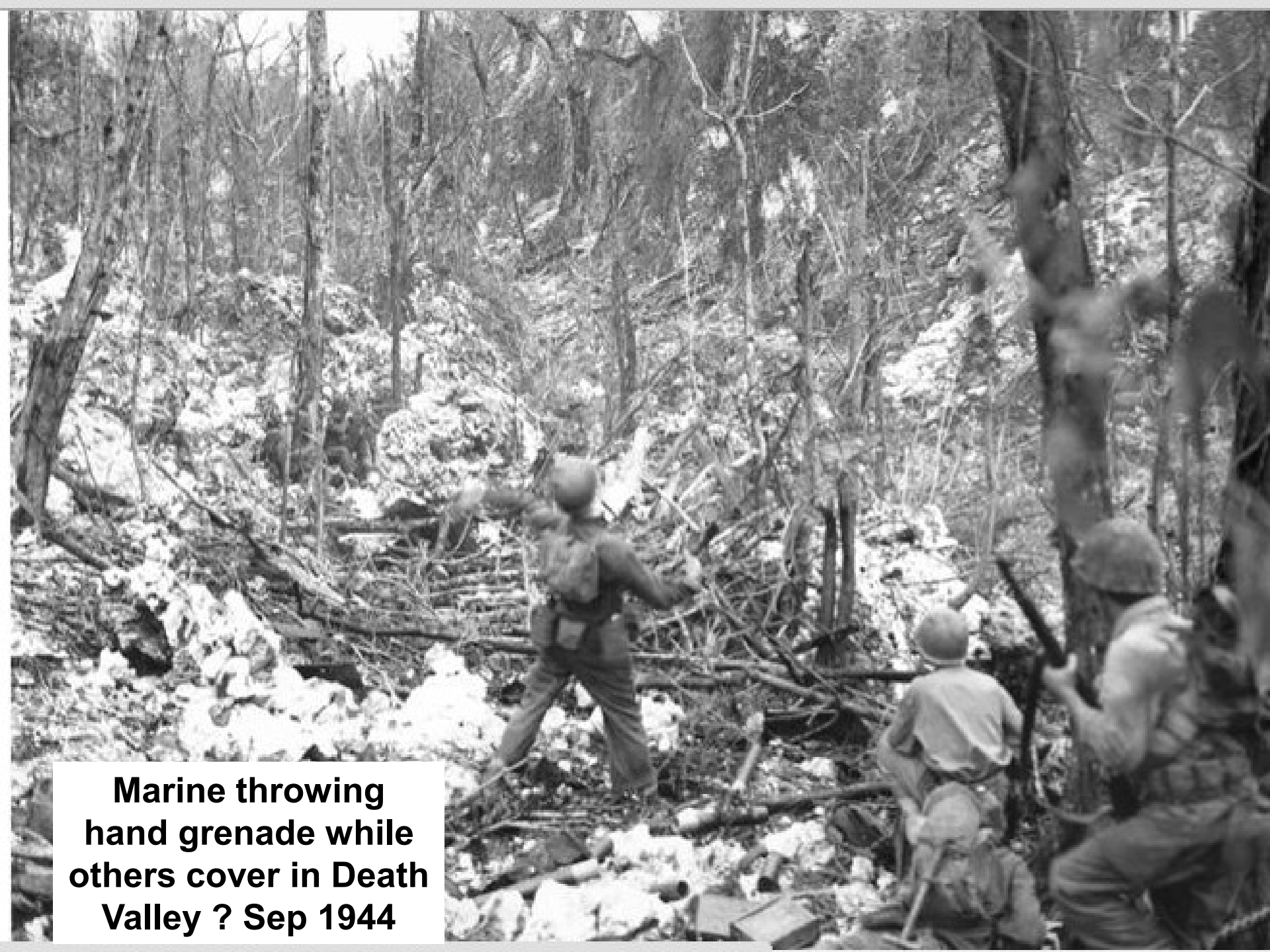
**Kevin inspecting
unexploded 6" ? armor
piercing rounds inside
remote cave**



Death Valley

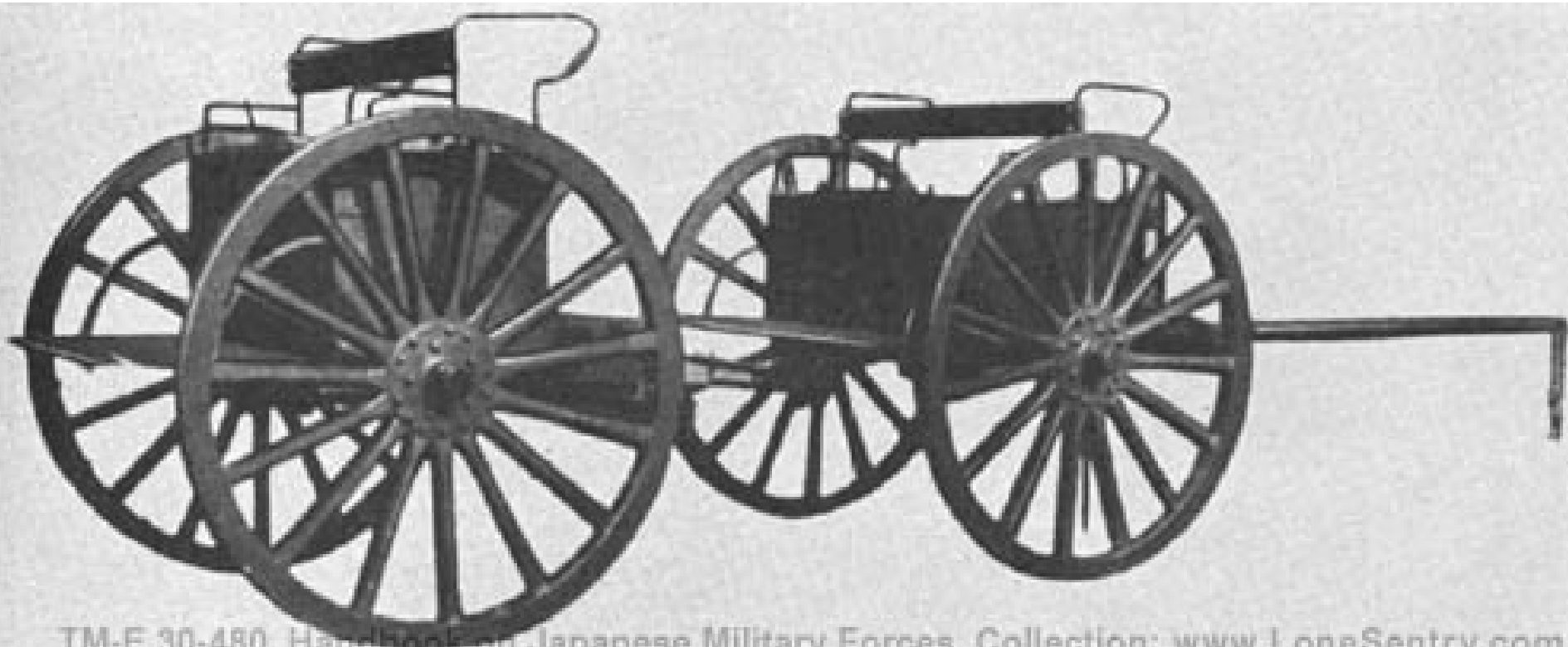
**Massive Japanese
Storage Cave entrance
at start of Death Valley**





**Marine throwing
hand grenade while
others cover in Death
Valley ? Sep 1944**

Japanese Horse Drawn Caisson and Limber for 75mm gun ammo



**Wooden spoke 2
wheeled ammo caissons
and limbers in Japanese
Storage Cave**

Entrance





**2 wheel wooden spoke
caissons, bunk, tray &
misc supplies in Storage
Cave**



**Japanese fire pit
looking into DV from
jungle ridge**



Unrecovered Japanese
bones inside cave off DV



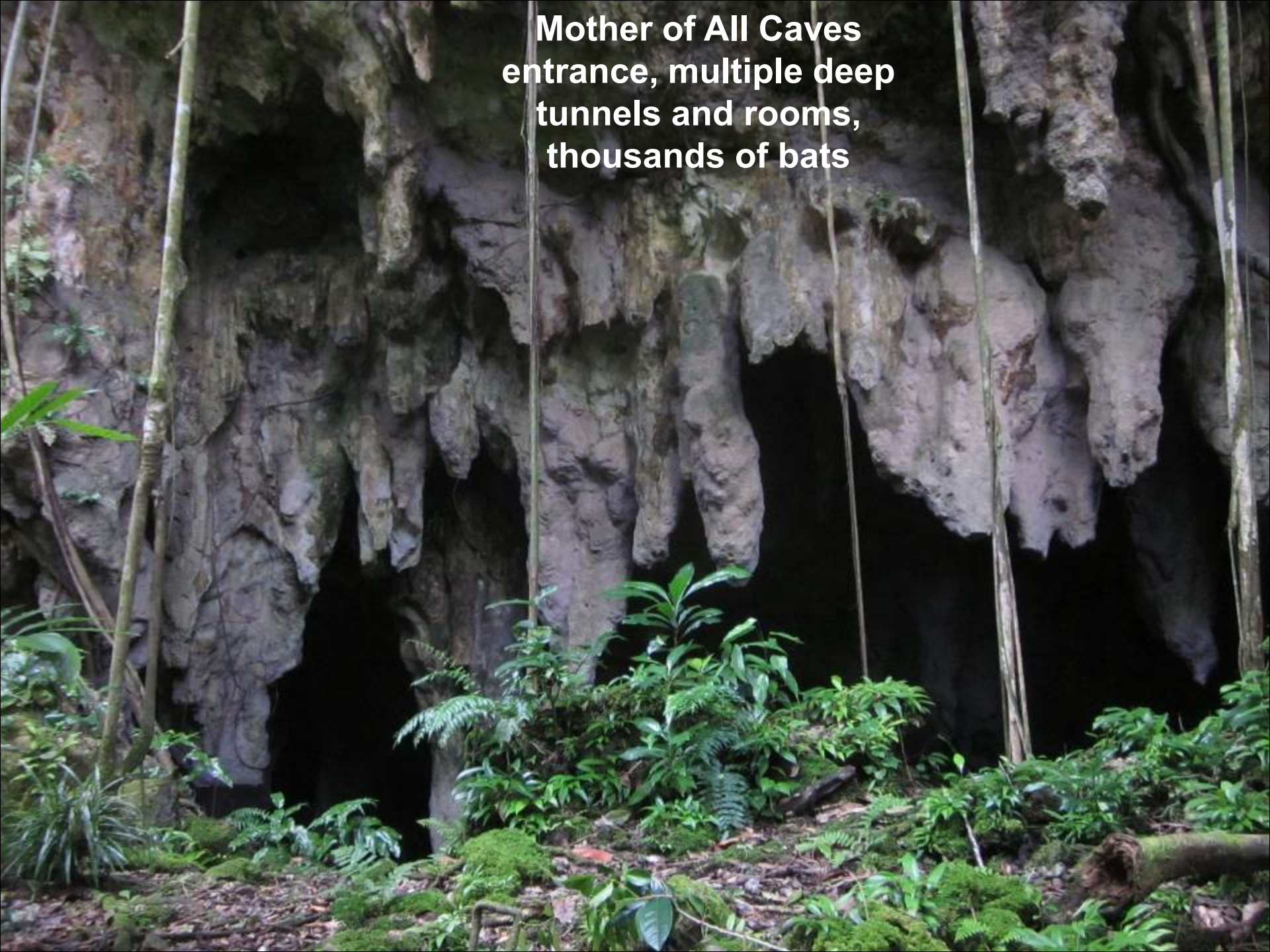
**Japanese
pickaxes, shoe
soles, ink
bottles, gas
mask, bones &
vertebrae in
cave off Death
Valley**

Mother of All Caves

Huge natural cave off
Death Valley



**Mother of All Caves
entrance, multiple deep
tunnels and rooms,
thousands of bats**



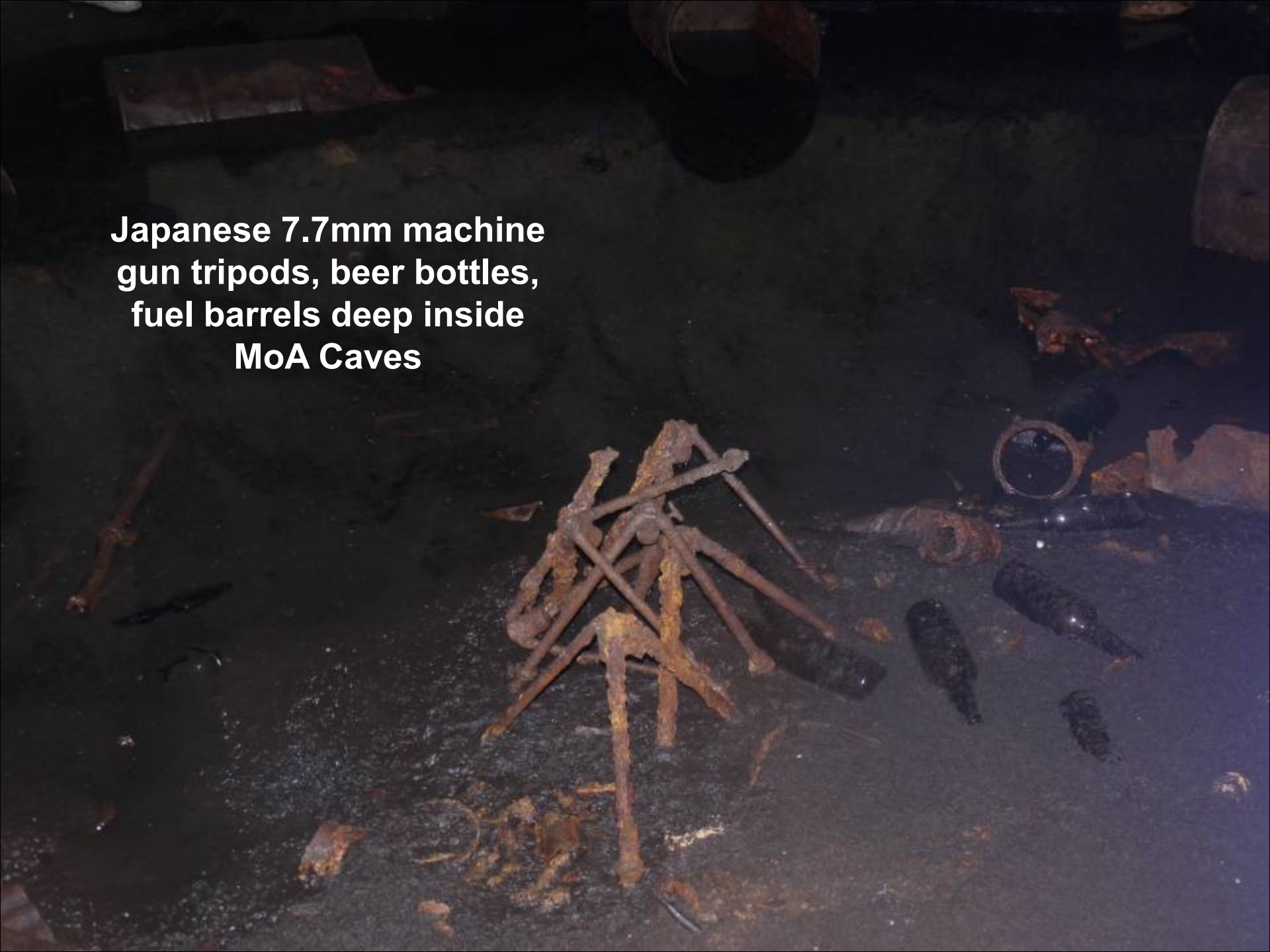
**Kevin and Phillip
inspecting teapot and
flamethrower gas bottle
at entrance to MoA
Caves**



Japanese tea
pots at rear
entrance of
MoA Caves



**Japanese 7.7mm machine
gun tripods, beer bottles,
fuel barrels deep inside
MoA Caves**



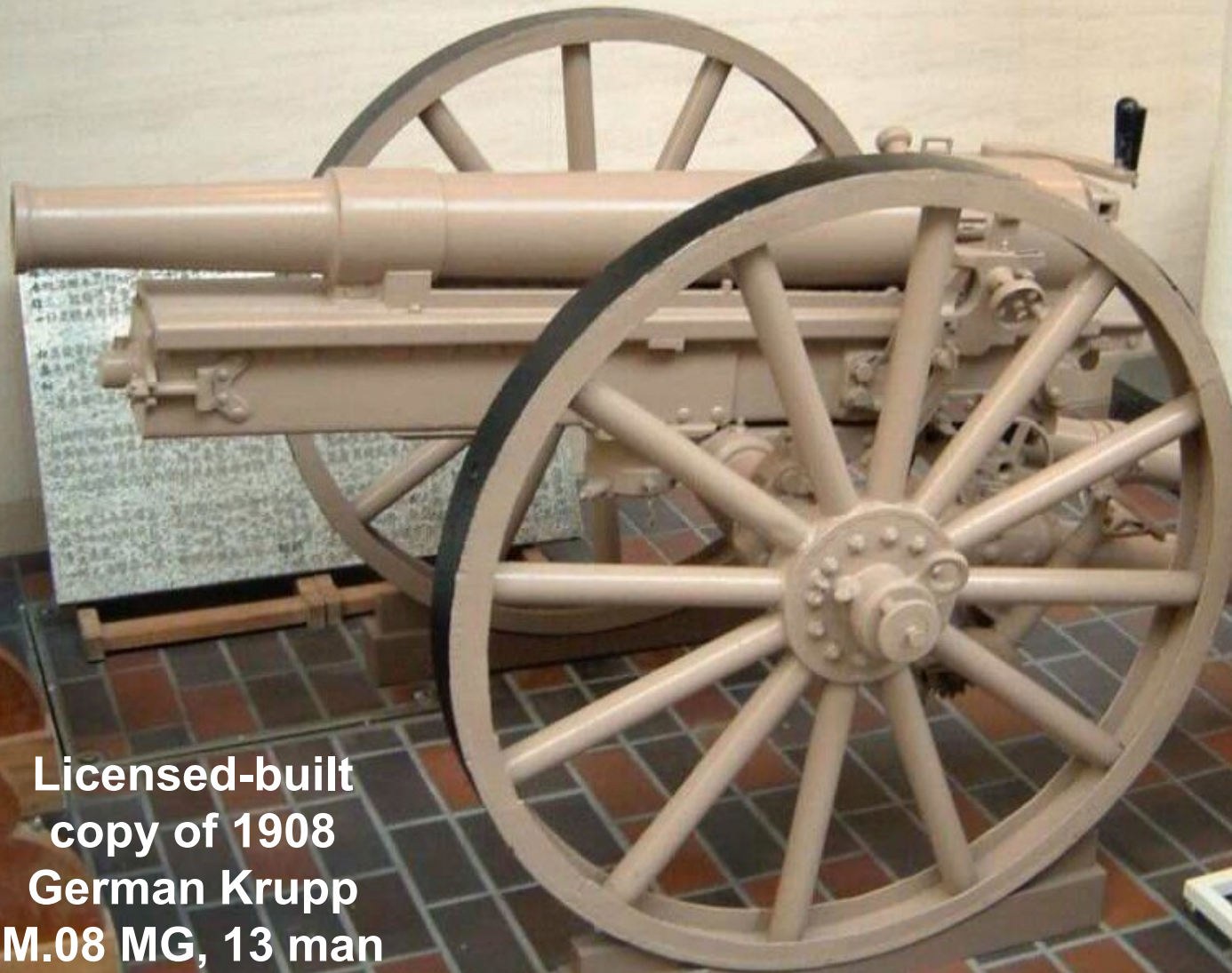
**Close view of Japanese 7.7mm
machine gun tripods and beer
bottles in MoA Caves**





**Japanese food bowl
with two spoons in
MoA Caves**

Japanese Early Type 41 75mm Mountain Gun



Licensed-built
copy of 1908
German Krupp
M.08 MG, 13 man
gun team



**Phillip and Japanese Type
41 75 mm Mountain Gun
deep in MoA Caves**



**Japanese Type 41
75mm Mountain
Gun deep in MoA
Caves**

**Last Cave across from
Storage Cave in DV, most
difficult entrance descent**





**Stalactites inside the
natural Last Cave**



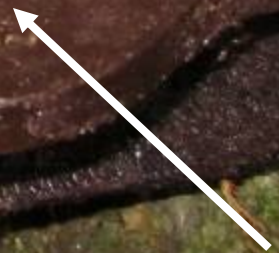
**Japanese beer and US
1943 Coke bottles
outside Last Cave**



**US mess tray in
Last Cave**



Phone hand piece,
insulator, lock and
fuse panel/switch
board? in Last
Cave



?????



Japanese 7.7mm
rounds still in clips,
note bone

Secret Cave



Kevin at entrance to
Secret Cave in POW
camp area

**Secret Cave
entrance from
inside, natural
stalactites**





**7 unexploded
Japanese Type 92
hand grenades, 7.7
mm rounds in
Secret Cave**



**Collection of 7 type 92
Japanese hand grenades
and 7.7 mm rifle rounds
in Secret Cave**



Japanese Type 92 hand
grenade in Secret Cave,
note intact impact primer



Japanese bones, mess kit tops, food cans in Secret Cave



**Brooke's Lemon drink bottle
and other US and Japanese
relics in Secret Cave, poss
WWII dump cave**

**US F4U/F6F? aircraft
cockpit canopy and other
plane parts in hollow
near POW Camp and
Secret Cave**



Mortimer Valley



Kevin and
Philip entering
Mortimer Valley

**US Marines advancing up Mortimer
Valley Sep 1944, note rain water
pools & US Sherman tanks**



**MV cave entrance
high on cliff edge,
pick ax and buckets**



Japanese Type 94 37 mm Anti Tank Gun

30 RPM, 11 man
crew, horse
drawn



Kevin with early Japanese
Type 94 37 mm Anti Tank
Gun at MV cave entrance



Japanese Model 95 gas mask & filter canister



**US and Japanese canteens
and gas mask filter canisters
in MV cave**





**Japanese Model 95 gas mask filter
canister and antifreeze liquid syringe
kit for cold weather**

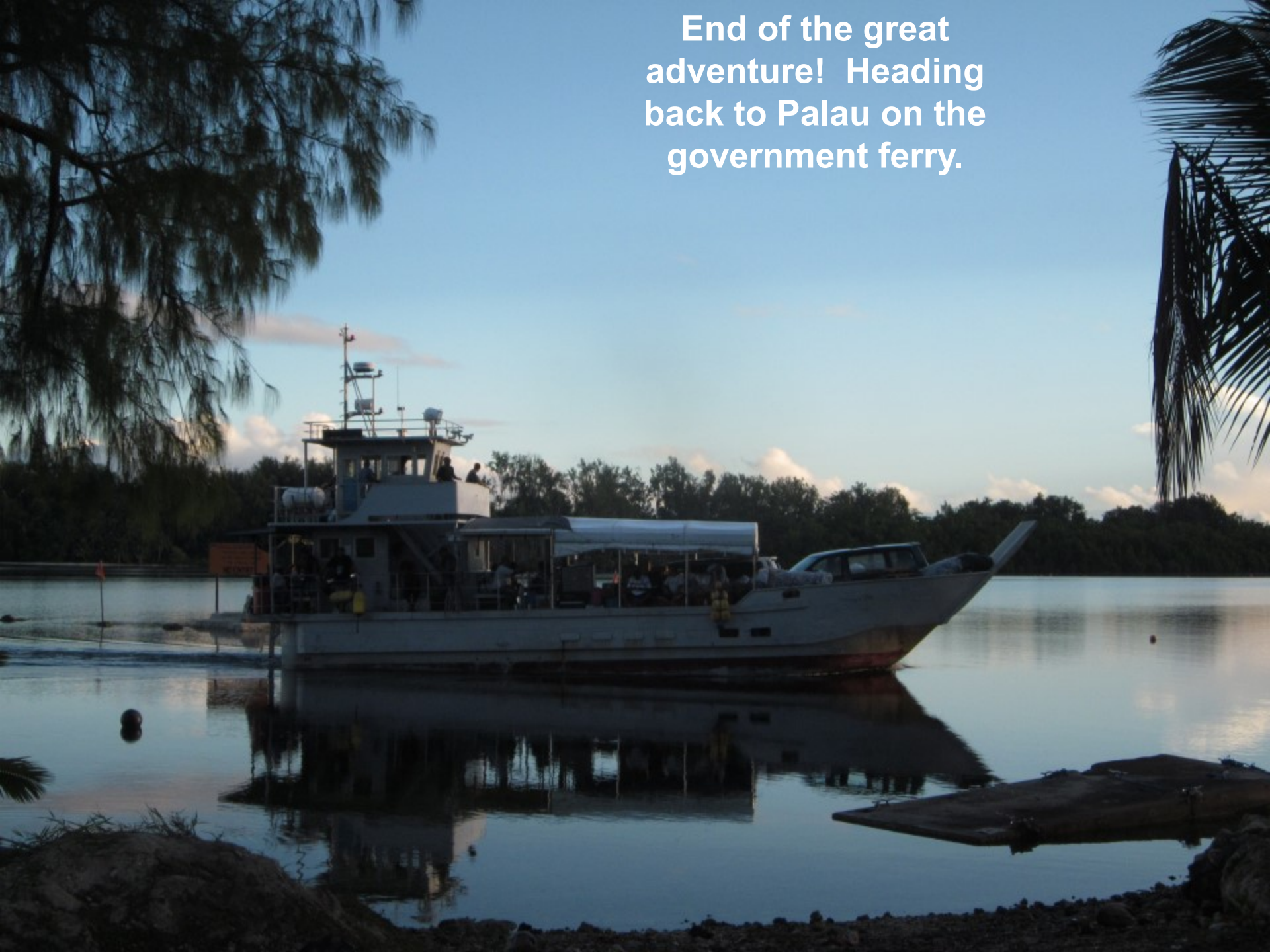
**US M1 battle
helmet and
aircraft parts
along MV trail**



Unexploded shell casing with dangerous cordite still inside, in lower section of southern Japanese Hospital Cave



**End of the great
adventure! Heading
back to Palau on the
government ferry.**



More here...

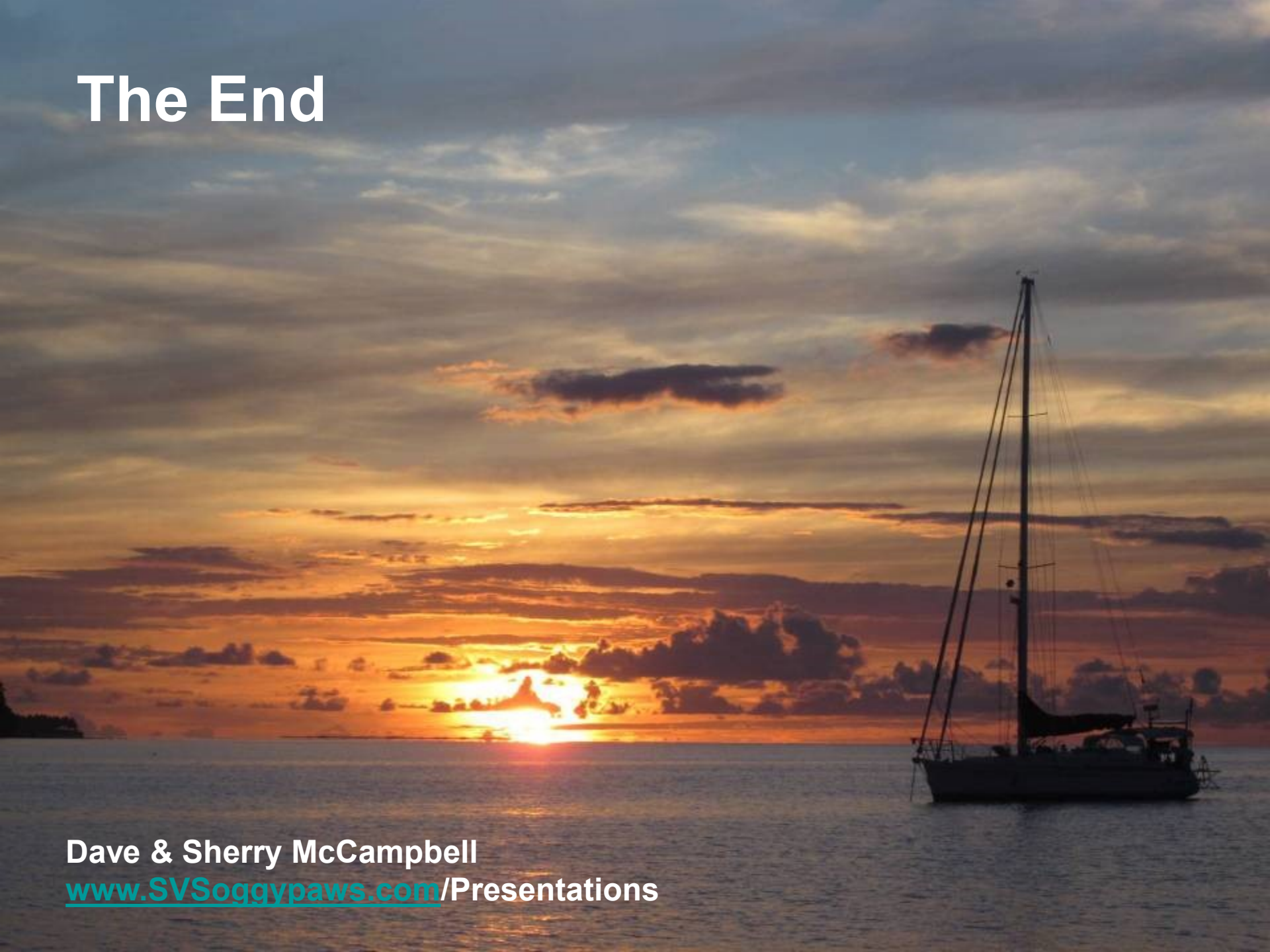
<http://svsoggypaws.com>

<http://svsoggypaws.blogspot.com>



ssca.org

The End



Dave & Sherry McCampbell

www.SVSoggypaws.com/Presentations