

An Intro to Satellite Chart Making



Overview

- What is Sat2Chart
- Why SasPlanet vs Google Earth
- SasPlanet Intro
- Sat2Chart Intro
- Make a few charts



Sherry McCampbell
s/v Soggy Paws

What is Sat2Chart?

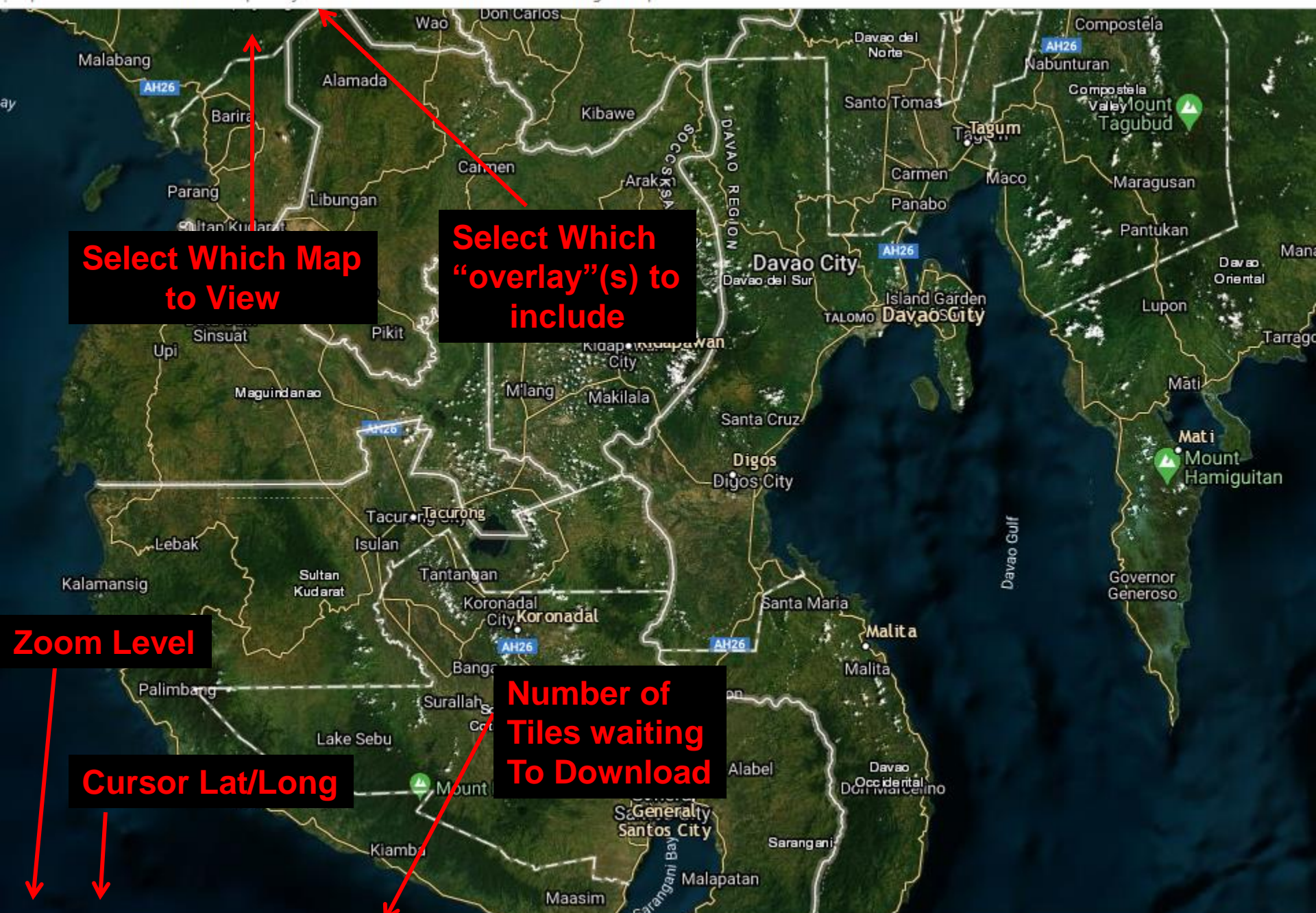
- Formerly named GE2KAP
- A free program that facilitates creating geo-referenced chart files from satellite pictures for use in marine navigation
- Interfaces to GoogleEarth and SasPlanet for satellite imagery
- Outputs files in KAP, mbtile, and KMZ format for use in charting programs
- Runs only on Windows, and requires install of ooRex software (free)

What is SasPlanet?

- Some Russians made an alternative to GoogleEarth.
- Written and documented in Russian
- Hugely more flexible than GoogleEarth

Why SasPlanet vs GoogleEarth

- GoogleEarth current version has removed the interface that Sat2Chart uses (though older versions still work)
- GE limits downloaded imagery to 2GB and whimsically removes pre-downloaded stuff when it reaches 2GB.
- SASPlanet is hugely more flexible than GE
- 4 Major world-wide satellite picture sources (and lots of other stuff)
- Navionics and CMap
- Overlays similar to GoogleEarth
- Easy to run off external drive, and easy to share via USB drive.



Select Which Map to View

Select Which "overlay"(s) to include

Zoom Level

Cursor Lat/Long

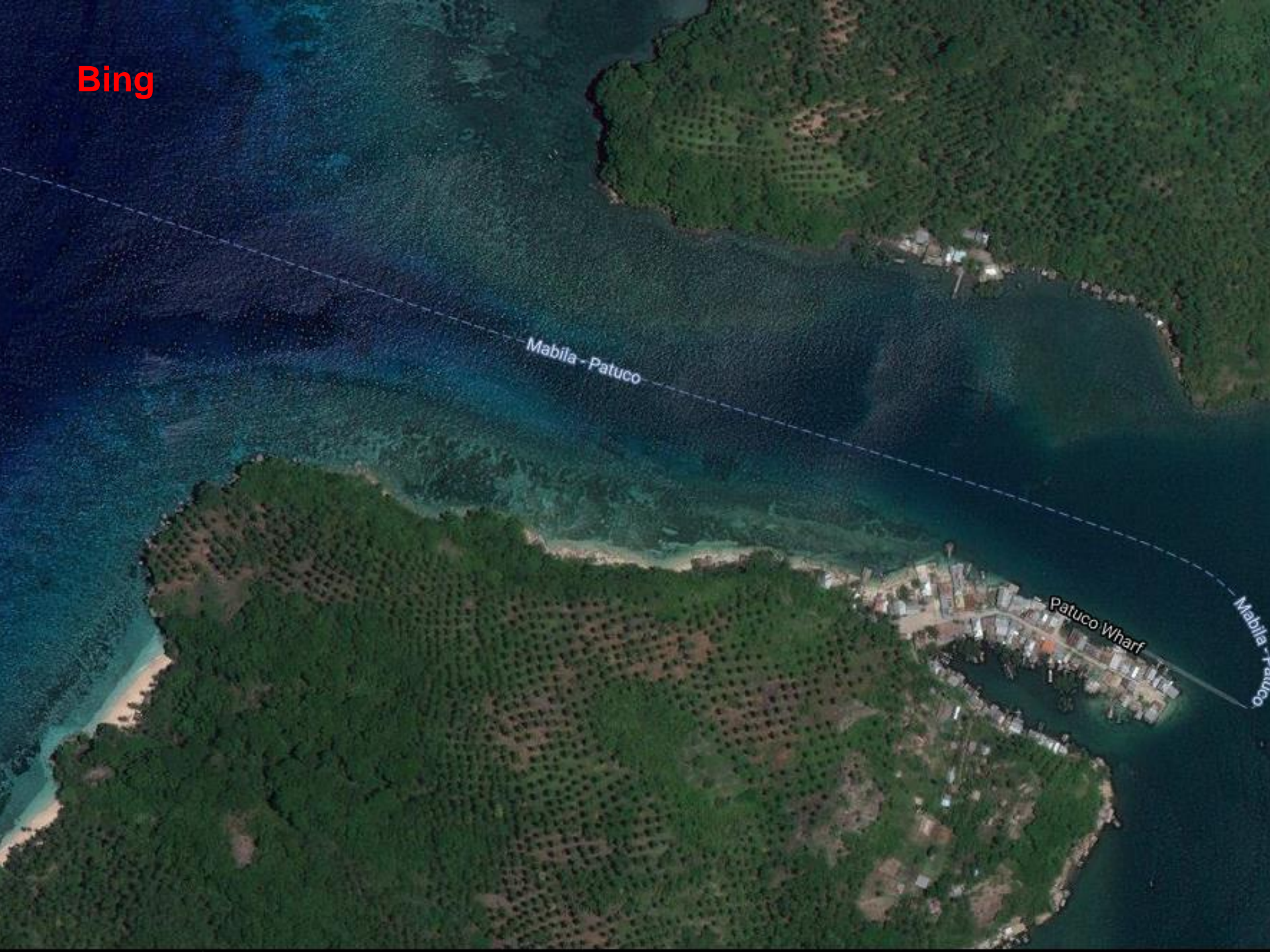
Number of Tiles waiting To Download

Switching Maps in SAS

	Map Hotkey
• Maps / Google / Google Satellite	“G”
• Maps / Bing / Bing Satellite	“B”
• Maps / ESRI / ArgGIS.Imagery	“A”
• Maps / Yandex / Satellite (Yandex Maps)	“Y”
• Maps / Marine / Navionics Marine Charts	“N”
• Maps / Marine / Navionics Sonar Charts	“S”
• Maps / Marine / CMAP	“C”

One keystroke to change maps!!!

Bing



Mabila - Patuco

Patuco Wharf

Mabila - Patuco

ArcGIS



Mabila - Patuco

Patuco Wharf

Mabila - Patuco

Yandex



Yandex

Mabila - Patuco

Patuco Wharf

Mabila - Patuco

Google

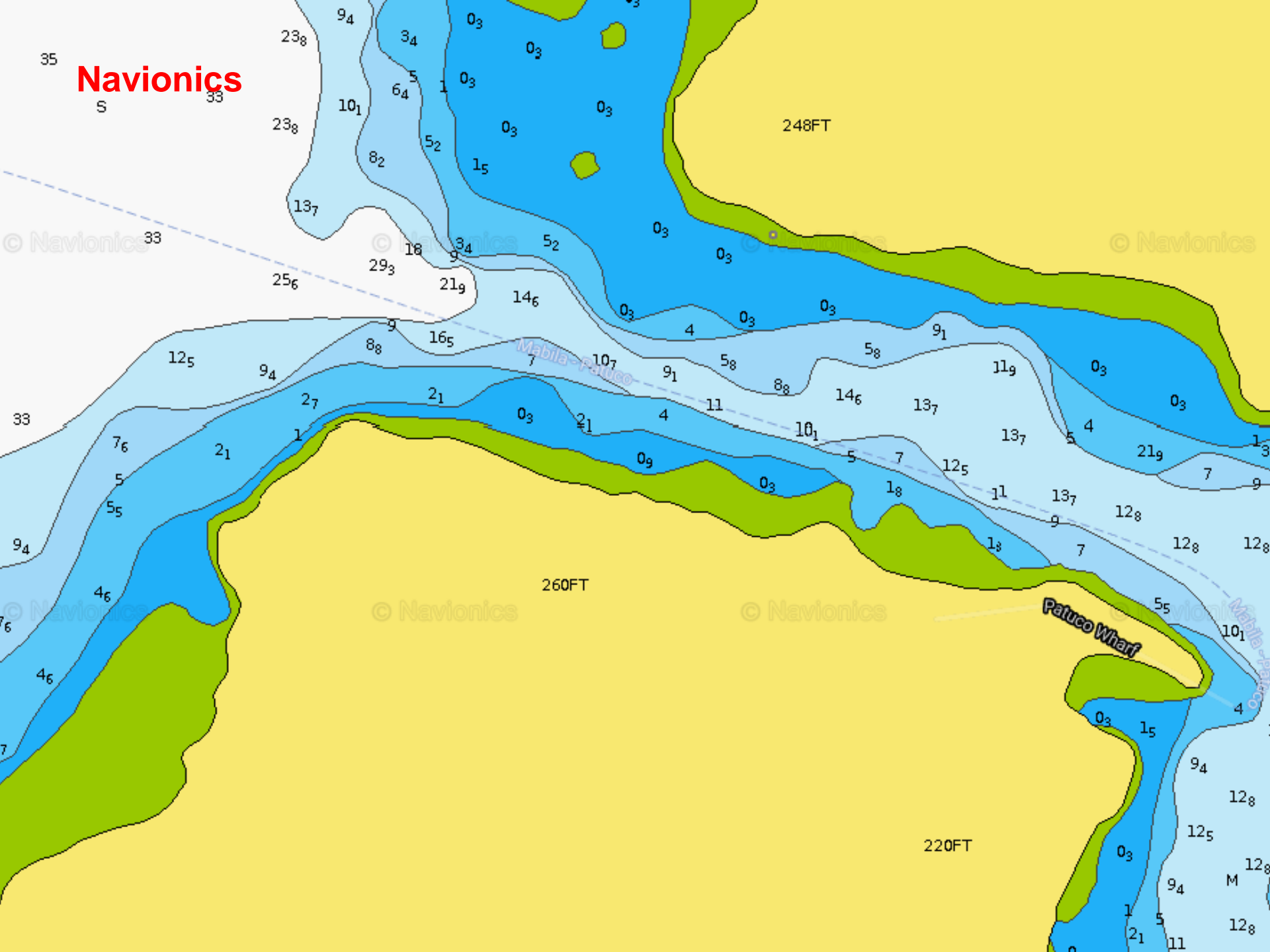


Mabila - Patuco

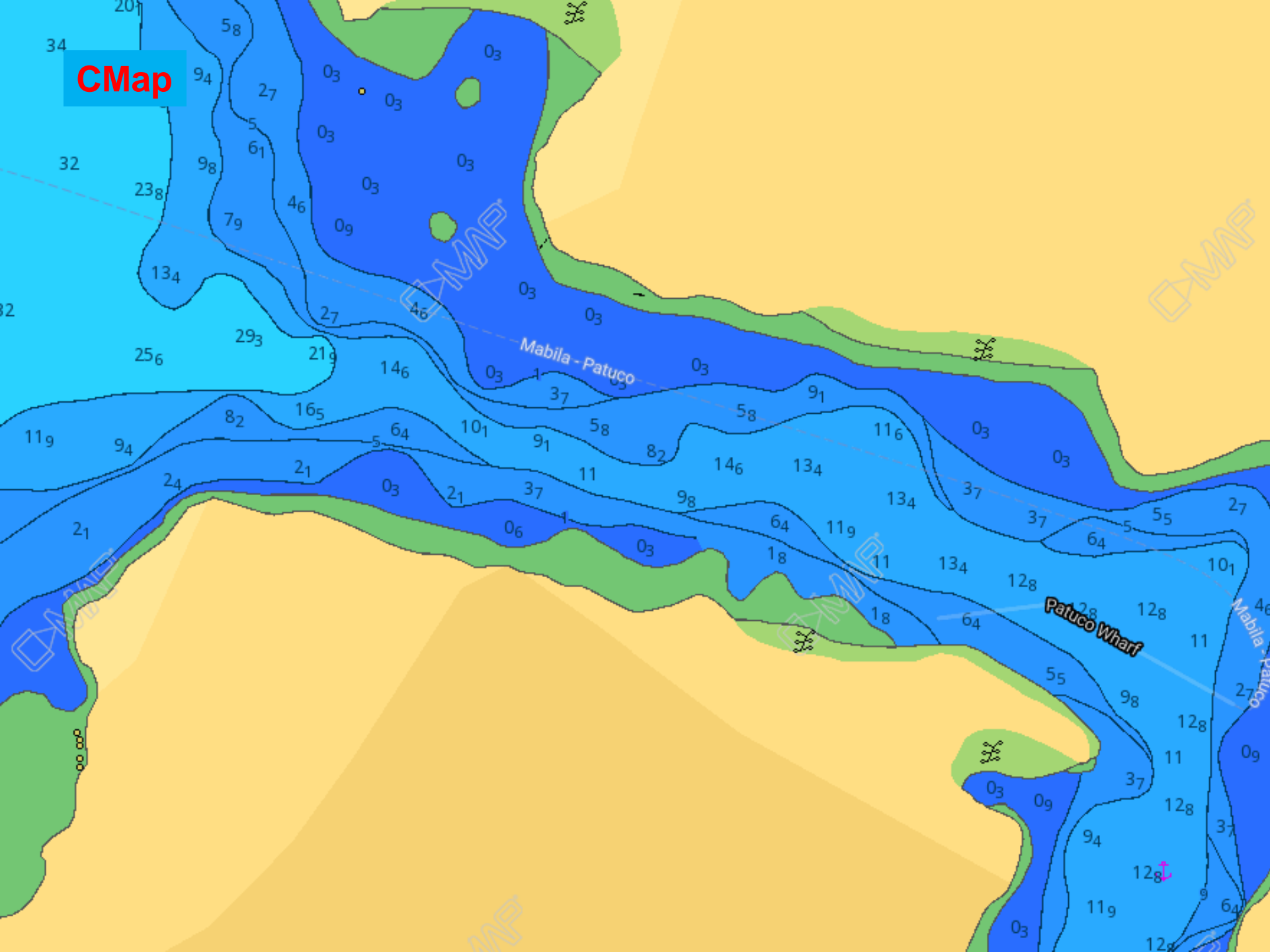
Patuco Wharf

Mabila - Patuco

Navionics



CMap



Layers

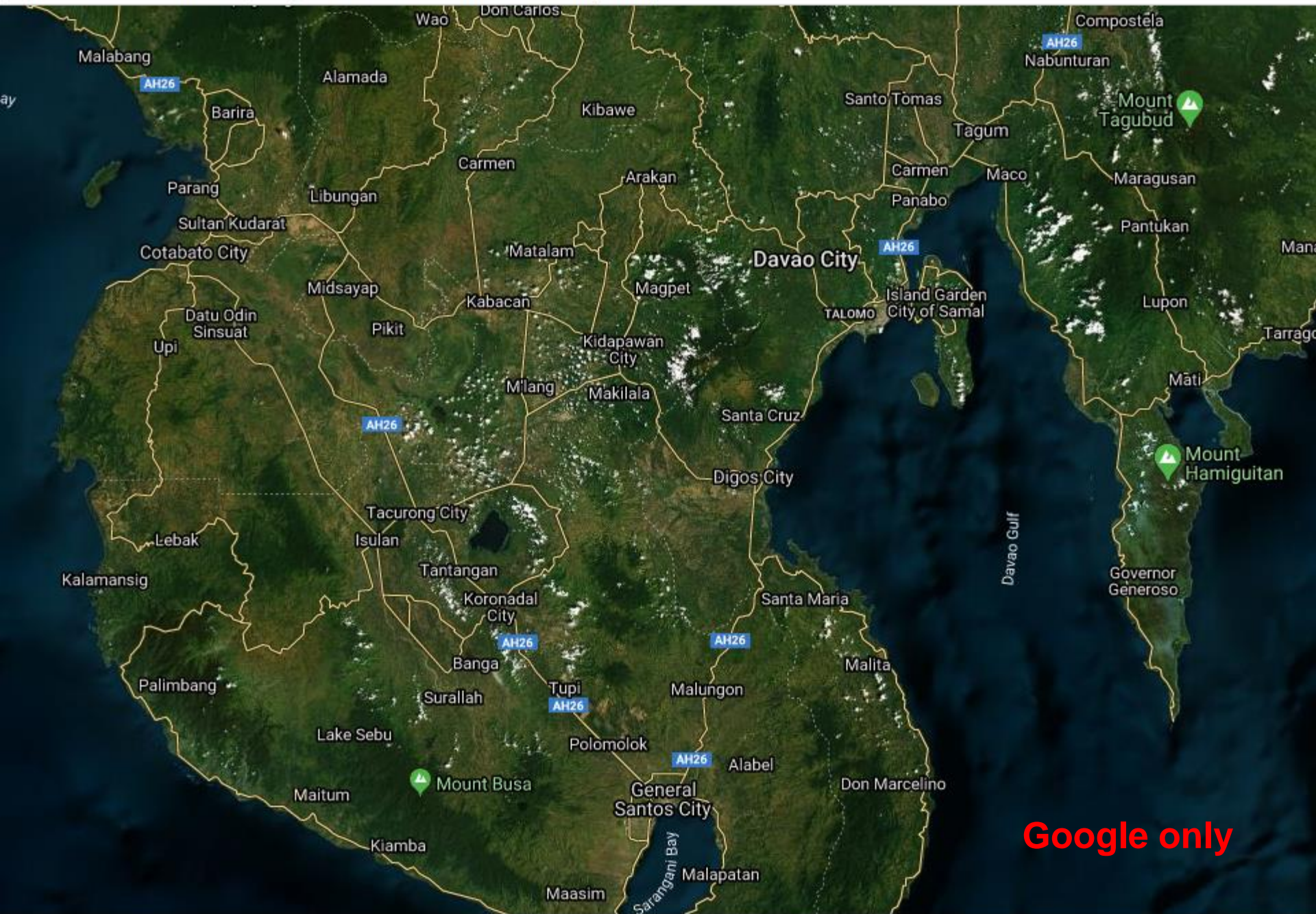
- Layers are “overlays” to the map that add information
- Roads, country boundaries, place names, points of interest, etc.
- I mainly use
 - Google Hybrid
 - ArcGIS Hybrid
 - sometimes one, sometimes both, sometimes none.



No Layers



ArcGIS only



Google only

Sat2Chart Basics

- First: Watch the tutorials, detailed, step by step (click on Tutorials button on Sat2Chart main screen)
 - Sat2Chart Overview (10 minutes)
 - Sat2Chart Basics (10 minutes)
- Make 1 single chart
- Make a chart of a route
- Make a chart of an area

Main Options Google earth SasPlanet

On SasPlanet display the area that you want to create a chart.

In the Chart Location\Name field enter the location (folder) and chart name eg:

C:\Sat2Chart\Charts\Toronto Harbor

This will create a chart called Toronto Harbor.mbtiles

Set the Depth Units to Unknown

Then press "Create Chart"

Chart Location\Name:

Tile

C:\Users\sherr\Documents\Charts\mbtiles\Red Sea\

<<

Create Chart(s) From:

- Google Earth Geo-Ref Image
 SasPlanet OpenCPN

Chart Type:

- Mbtiles Kml
 Kap

Depth Units:

Unknown



Tutorials

Create Chart

Donate

Tool Tips

- Turn on “Field and Buttons Tips” on Options page
- Hover your cursor over any item on the screen
- See pop-up with explanation of what that does.

Tool Tips

Sat2Chart V10.0.0.0

Main Options Google earth SasPlanet

On SasPlanet display the area that you want to create a chart.

In the Chart Location\Name field enter the location (folder) and chart name eg:
C:\Sat2Chart\Charts\Toronto Harbor
This will create a chart called Toronto Harbor.mbtiles

Set the Depth Units to Unknown
Then press "Create Chart"

Tip:
Enter the folder where the chart will be created and the name of the chart,
for example:
C:\Sat2Chart\Charts\Toronto Harbor

Chart Location\Name:
C:\Users\shem\Documents\Charts\mbtiles\Red Sea

Create Chart(s) From:
 Google Earth Geo-Ref Image
 SasPlanet OpenCPN

Chart Type:
 Mbtiles Kml
 Kap

Depth Units:
Unknown

Tutorials Create Chart Donate

For help press F1 or for help on a field or button if tool tips are on move the mouse over it

Accessing Tutorials

Sat2Chart V10.0.0.0

Main Options Google earth SasPlanet

On SasPlanet display the area that you want to create a chart.

In the Chart Location\Name field enter the location (folder) and chart name eg:
C:\Sat2Chart\Charts\Toronto Harbor
This will create a chart called Toronto Harbor.mbtiles

Set the Depth Units to Unknown
Then press "Create Chart"

Tip:
Enter the folder where the chart will be created and the name of the chart, for example:
C:\Sat2Chart\Charts\Toronto Harbor

Chart Location\Name: C:\Users\shem\Documents\Charts\mbtiles\Red Sea

Create Chart(s) From:
 Google Earth Geo-Ref Image
 SasPlanet OpenCPN

Chart Type:
 Mbtiles Kml
 Kap

Depth Units: Unknown

Tutorials Create Chart Donate

For help press F1 or for help on a field or button if tool tips are on move the mouse over it

Click
This
Button

Tutorials Available

Internet Access Required

Sat2Chart Overview

Sat2Chart General

Creating a Chart from Google earth

Creating a Chart from SasPlanet

Creating a Tiled Chart from Google earth

Creating a Tiled Chart from SasPlanet

Creating Paths and Polygons Using OpenCPN and Google earth

Creating Paths and Polygons Using SasPlanet

Creating Charts from Paths and Polygons Using SasPlanet

Creating Charts from Paths and Polygons Using Google earth

Overlaying OpenCPN onto Google earth

Editing a Chart with the View Image Editor

Editing an Existing Chart with an Advanced Image Editor

Creating a Chart From a Geo_Referenced Image

Mbtiles Multi-Map Support

Mbtiles_Viewer Utility

Merge_Mbtiles Utility

Extract_High_Zoom Utility

Merging Paths and Polygons

Creating a KML Chart from OpenCPN

Links

- Sat2Chart download site
<http://www.gdayii.ca/Downloads.php>
- SASPlanet download (already set up for Sat2Chart)
<http://www.gdayii.ca/Downloads/Sasplanet.zip>
- GoogleEarth download (other newer versions won't work with Sat2Chart)
<http://www.gdayii.ca/Downloads/googleearth-win-bundle-7.1.2.2041.1.exe>
- Sat2Chart (GE2KAP) Facebook Group
<https://web.facebook.com/groups/880328018749097/>
- Presentation on why Satellite Charts are necessary
<http://svsoggypaws.com/files/presentations/SoggyPaws-ElectronicNavigationAlternatives.pdf>

Questions?



The End
www.SVSoggyPaws.com